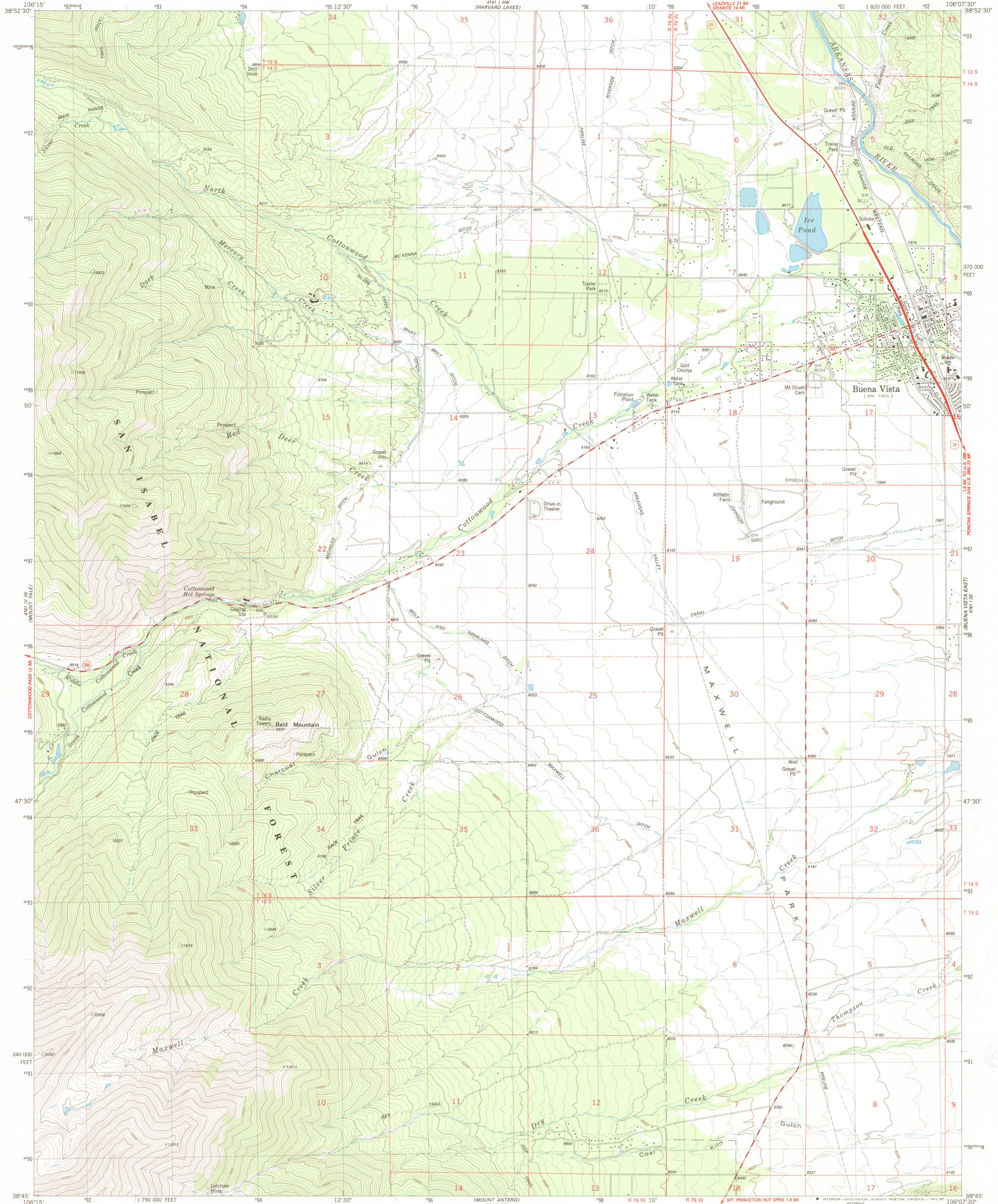
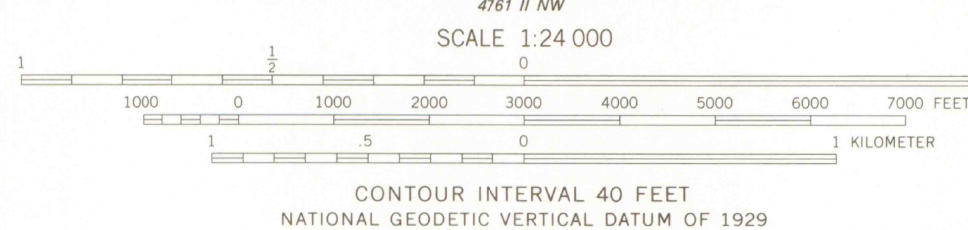
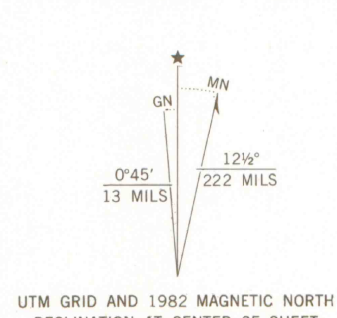


UNITED STATES
DEPARTMENT OF THE INTERIOR
GEOLOGICAL SURVEY

BUENA VISTA WEST QUADRANGLE
COLORADO-CHAFFEE CO.
7.5 MINUTE SERIES (TOPOGRAPHIC)
SW/4 BUENA VISTA 15' QUADRANGLE



Mapped, edited, and published by the Geological Survey
Control by USGS and NOS/NOAA
Topography by photogrammetric methods from aerial photographs
taken 1975. Field checked 1976. Map edited 1982
Projection and 10,000-foot grid ticks: Colorado
coordinate system, central zone (Lambert conformal conic)
1000-meter Universal Transverse Mercator grid, zone 13
1927 North American datum
To place on the predicted North American Datum 1983
move the projection lines 4 meters north and
51 meters east as shown by dashed corner ticks
Fine red dashed lines indicate selected fence lines
Certain land lines are omitted because of insufficient data
There may be private inholdings within the boundaries of
the National or State reservations shown on this map



ROAD CLASSIFICATION
Primary highway, hard surface
Secondary highway, hard surface
Interstate Route
U.S. Route
State Route
Light-duty road, hard or improved surface
Unimproved road

BUENA VISTA WEST, COLO.
SW/4 BUENA VISTA 15' QUADRANGLE
N3845-W10607.5/7.5

1982
DMA 4761 1 SW-SERIES V877

DEC 28 2005

G 3700
s24
G4
MAP ROOM