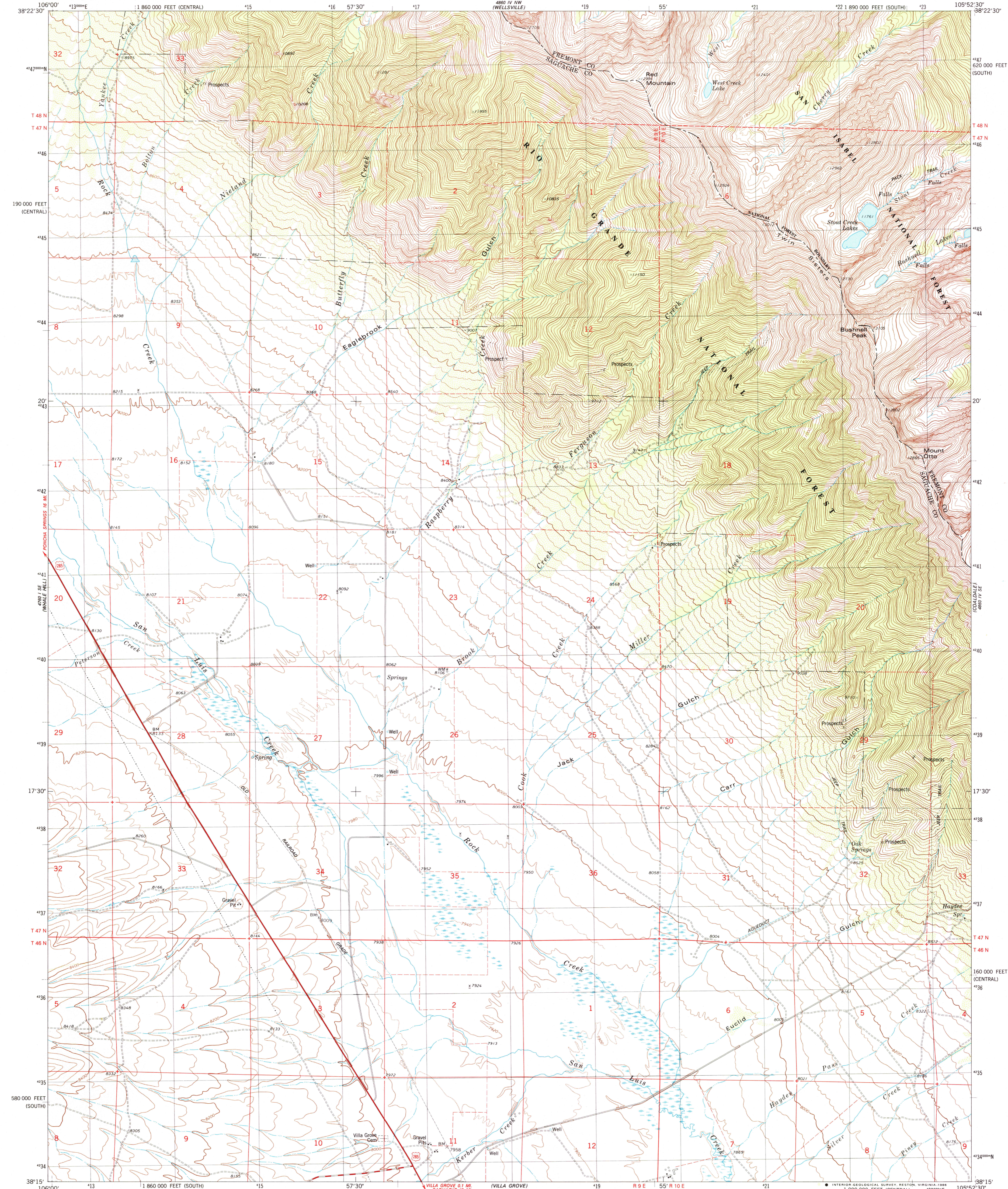
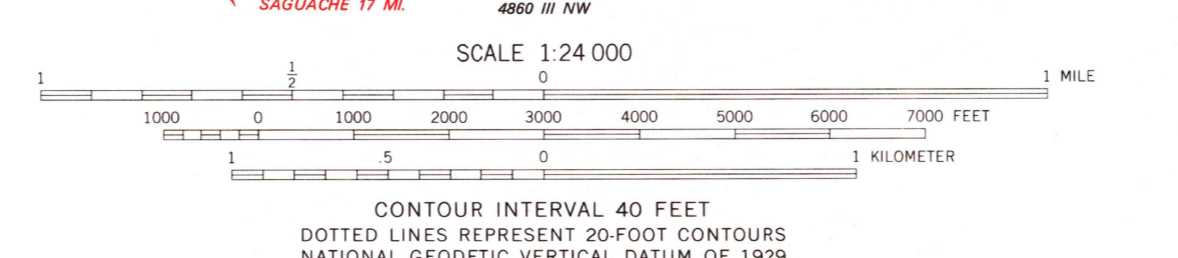
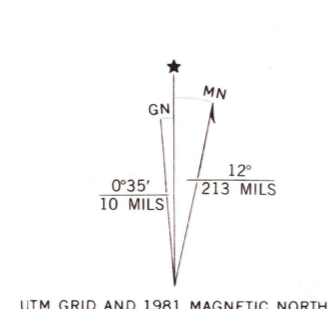


UNITED STATES
DEPARTMENT OF THE INTERIOR
GEOLOGICAL SURVEY

BUSHNELL PEAK QUADRANGLE
COLORADO
7.5 MINUTE SERIES (TOPOGRAPHIC)



Mapped, edited, and published by the Geological Survey
Control by USGS and NOS/NOAA
Topography by photogrammetric methods from aerial photographs taken 1975. Field checked 1976. Map edited 1981
Projection: Colorado coordinate system, south zone (Lambert conformal conic)
10,000-foot grid ticks based on Colorado coordinate system, south and central zones
1000-meter Universal Transverse Mercator grid, zone 13 1927 North American Datum
To place on the predicted North American Datum 1983 move the projection lines 3 meters north and 50 meters east as shown by dashed corner ticks
Fine red dashed lines indicate selected fence lines
Certain land lines are omitted because of insufficient data



ROAD CLASSIFICATION
Primary highway, hard surface ———— Light-duty road, hard or improved surface
Secondary highway, hard surface ———— Unimproved road
Interstate Route ———— U.S. Route ———— State Route

THIS MAP COMPLIES WITH NATIONAL MAP ACCURACY STANDARDS
FOR SALE BY U.S. GEOLOGICAL SURVEY, DENVER, COLORADO 80225, OR RESTON, VIRGINIA 22092
A FOLDER DESCRIBING TOPOGRAPHIC MAPS AND SYMBOLS IS AVAILABLE ON REQUEST

BUSHNELL PEAK, COLO.
SW/4 HOWARD 15' QUADRANGLE
38105-C8-TF-024
1981
DMA 4860 IV SW-SERIES V877

