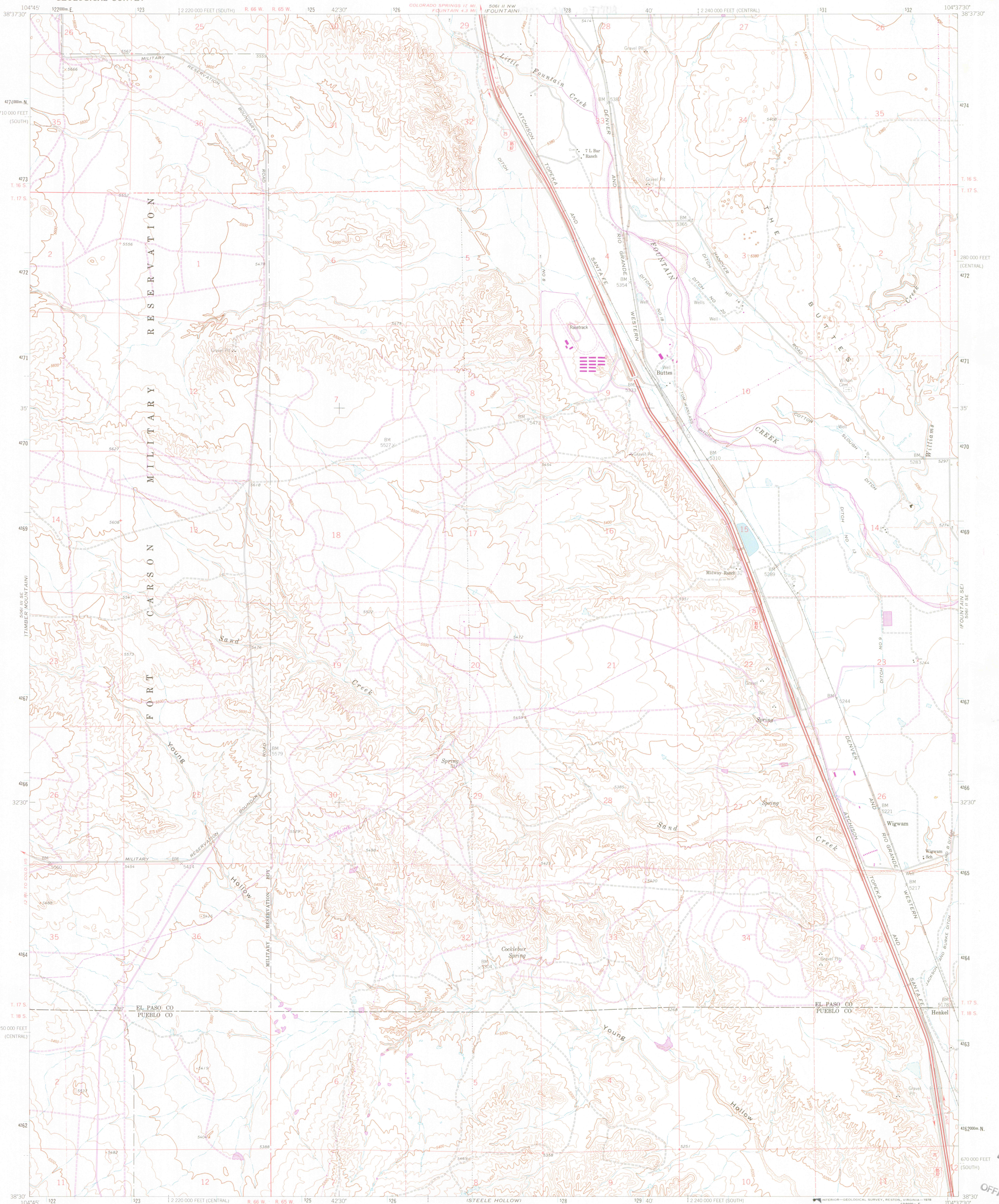


UNITED STATES
DEPARTMENT OF THE INTERIOR
GEOLOGICAL SURVEY

BUTTES QUADRANGLE
COLORADO
7.5 MINUTE SERIES (TOPOGRAPHIC)

copy?
GEOLOGY



Mapped, edited, and published by the Geological Survey
in cooperation with U. S. Corps of Engineers

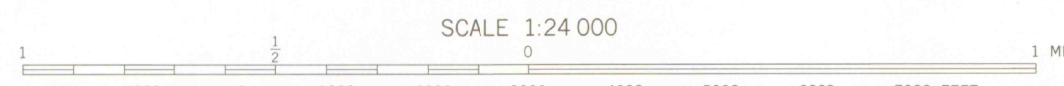
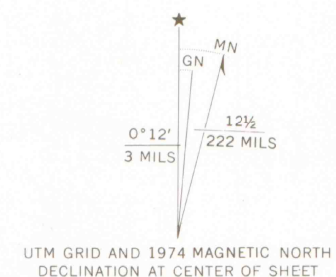
Control by USGS and NOS/NOAA

Topography by photogrammetric methods from aerial photographs
taken 1947. Field checked 1948. Revised from aerial
photographs taken 1960. Field checked 1961

Polyconic projection. 1927 North American datum
10,000-foot grids based on Colorado coordinate system,
central and south zones
1000-meter Universal Transverse Mercator grid ticks,
zone 13, shown in blue

Fine red dashed lines indicate selected fence and field lines where
generally visible on aerial photographs. This information is unchecked

Revisions shown in purple compiled from aerial photographs
taken 1969 and 1974. This information not field checked



CONTOUR INTERVAL 20 FEET
NATIONAL GEODETIC VERTICAL DATUM OF 1929



THIS MAP COMPLIES WITH NATIONAL MAP ACCURACY STANDARDS
FOR SALE BY U. S. GEOLOGICAL SURVEY, DENVER, COLORADO 80225, OR RESTON, VIRGINIA 22092
A FOLDER DESCRIBING TOPOGRAPHIC MAPS AND SYMBOLS IS AVAILABLE ON REQUEST

FEB 1995

MAP ROOM
ARTHUR LAKES LIBRARY
COLORADO SCHOOL OF MINES
GEOLOGICAL SURVEY OF WYOMING

ROAD CLASSIFICATION

Heavy-duty ——— Light-duty ———
Unimproved dirt ———
Interstate Route ——— U. S. Route ———

TOPO CO 24000

BUTTES, COLO.

N8380-W10437.5/7.5

1961
PHOTOREVISED 1969 AND 1974
AMS 5061 II SW-SERIES V877

copy
GEOLOGY