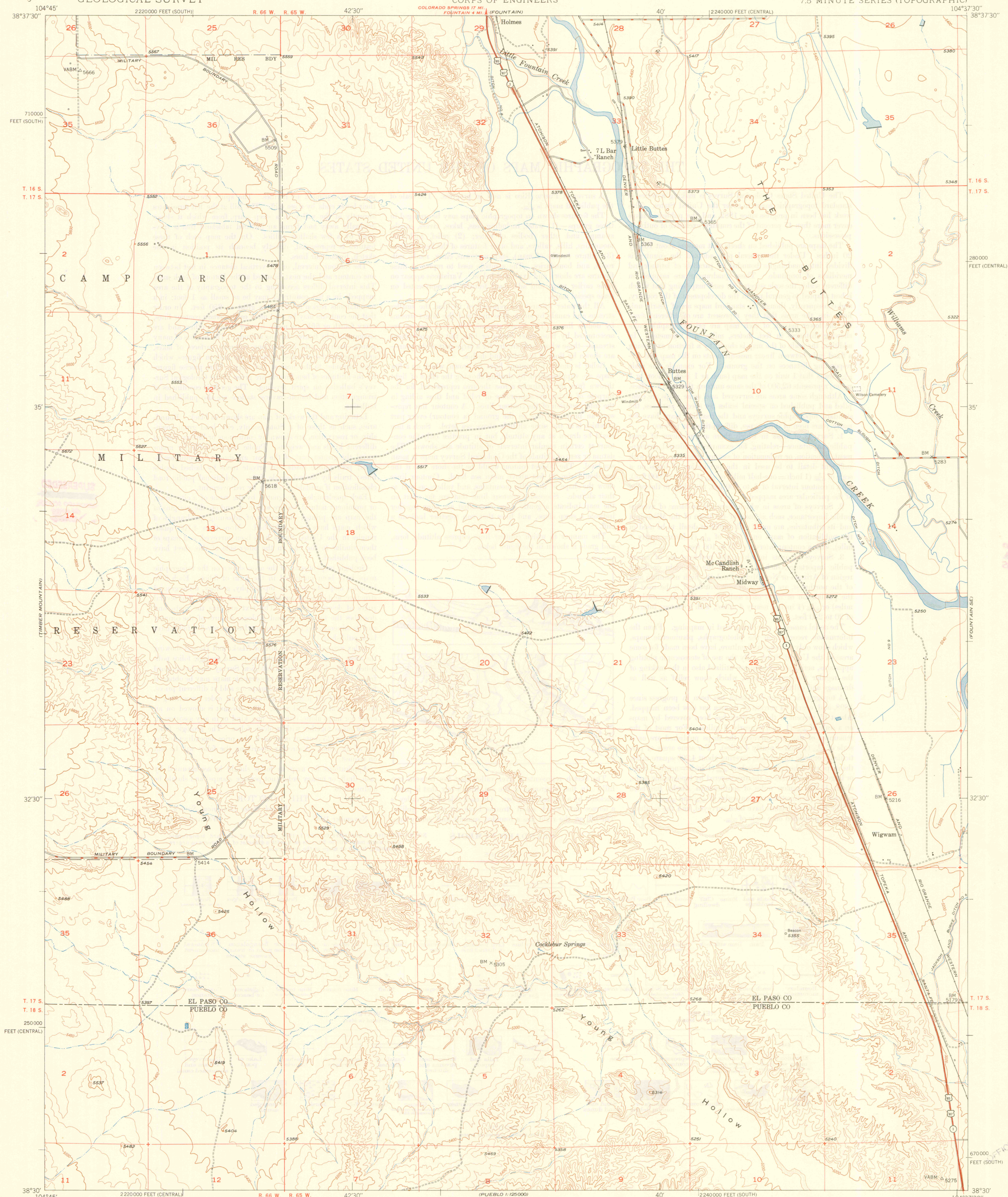


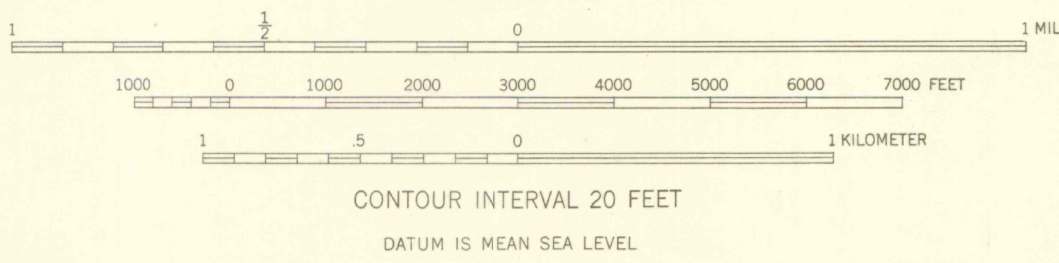
UNITED STATES
DEPARTMENT OF THE INTERIOR
GEOLOGICAL SURVEY

UNITED STATES
DEPARTMENT OF THE ARMY
CORPS OF ENGINEERS

BUTTES QUADRANGLE
COLORADO
7.5 MINUTE SERIES (TOPOGRAPHIC)



Maped by the Geological Survey and Tennessee Valley Authority
Edited and published by the Geological Survey
Control by USGS and USC&GS
Topography from aerial photographs by multiplex methods
Aerial photographs taken 1947. Field check 1948
Polyconic projection. 1927 North American datum
10,000-foot grids based on Colorado coordinate system, central and south zones



ROAD CLASSIFICATION
HARD-SURFACE ALL WEATHER ROADS DRY WEATHER ROADS
Heavy-duty LINE 16 Improved dirt
Medium-duty LINE 16 Unimproved dirt
Loose-surface, graded, or narrow hard-surface
U. S. Route
State Route

BUTTES, COLO.
N3830-W10437.5/7.5
EDITION OF 1949

THIS MAP COMPLIES WITH NATIONAL MAP ACCURACY STANDARDS
FOR SALE BY U. S. GEOLOGICAL SURVEY, DENVER, COLORADO OR WASHINGTON 25, D. C.

I 19.12 : 58 982 949