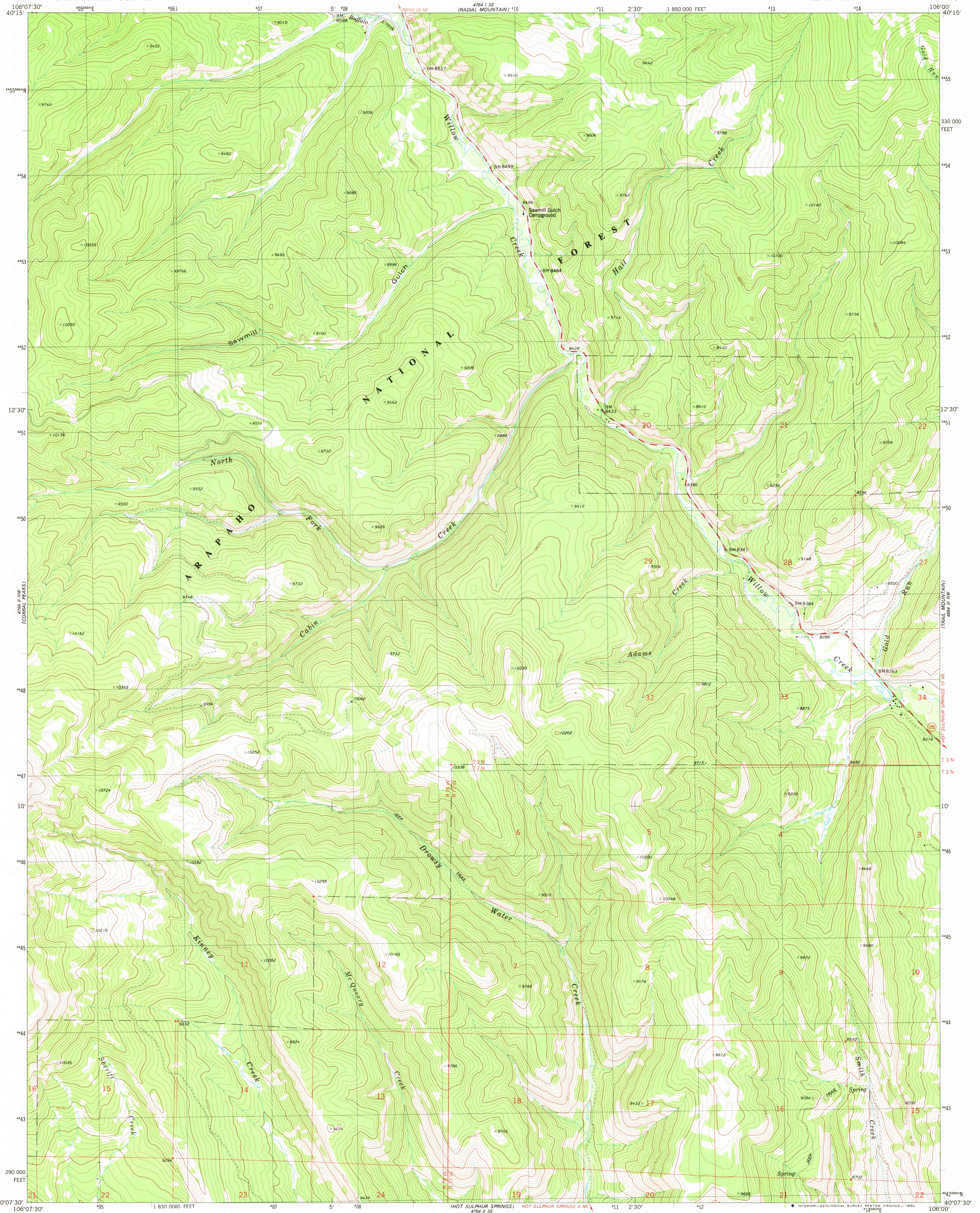


UNITED STATES
DEPARTMENT OF THE INTERIOR
GEOLOGICAL SURVEY

CABIN CREEK QUADRANGLE
COLORADO—GRAND CO.
7.5 MINUTE SERIES (TOPOGRAPHIC)
NE/4 HOT SULPHUR SPRINGS 15' QUADRANGLE



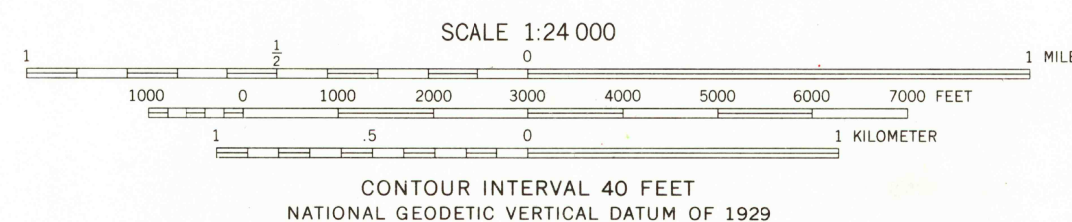
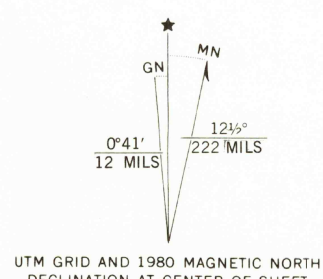
Mappe dited, and published by the Geological Survey

Control by USGS and NOS/NOAA
Topography by photogrammetric methods from aerial photographs
taken 1975. Field checked 1976. Map edited 1980

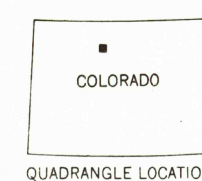
Projection and 10,000-foot grid ticks: Colorado
coordinate system, north zone (Lambert conformal conic)
1000-meter Universal Transverse Mercator grid, zone 13
1927 North American datum

To place on the predicted North American Datum 1983
move the projection lines 6 meters north and
50 meters east as shown by dashed corner ticks

Certain land lines are omitted because of insufficient data
There may be private inholdings within the boundaries of the
National or State reservations shown on this map



THIS MAP COMPLIES WITH NATIONAL MAP ACCURACY STANDARDS
FOR SALE BY U. S. GEOLOGICAL SURVEY, DENVER, COLORADO 80225, OR RESTON, VIRGINIA 22092
A FOLDER DESCRIBING TOPOGRAPHIC MAPS AND SYMBOLS IS AVAILABLE ON REQUEST



ROAD CLASSIFICATION
Primary highway, hard surface
Secondary highway, hard surface
Light-duty road, hard or improved surface
Unimproved road
Interstate Route
U. S. Route
State Route

CABIN CREEK, COLO.
NE/4 HOT SULPHUR SPRINGS 15' QUADRANGLE
N4007.5-W10600/7.5

1980

DMA 4764 II NE—SERIES: V877

FEB 3 1981

2000