

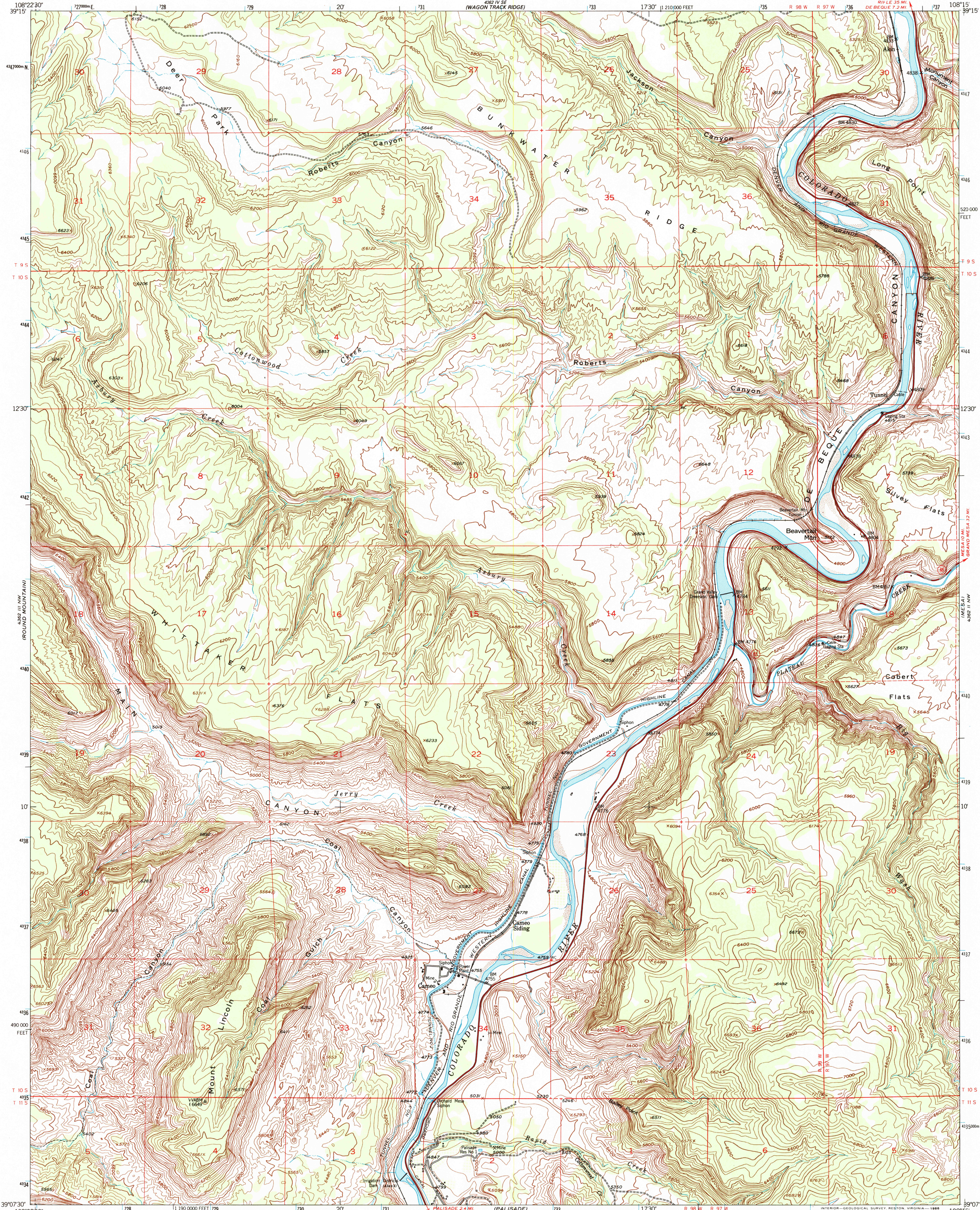
482 II NW  
(WAGON TRACK RIDGE)



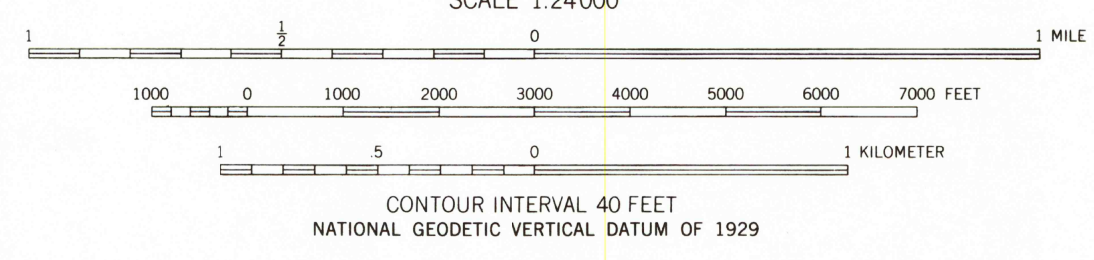
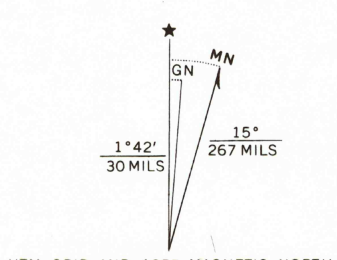
U.S. DEPARTMENT OF THE INTERIOR  
U.S. GEOLOGICAL SURVEY

CAMEO QUADRANGLE  
COLORADO-MESA CO.  
7.5 MINUTE SERIES (TOPOGRAPHIC)

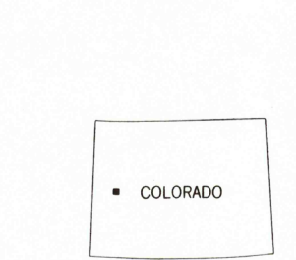
482 I SW  
(DE BEQUE)



Maped, edited, and published by the Geological Survey  
Control by USGS and USC&GS  
Topography from aerial photographs by multiplex methods  
and by planetable surveys 1955. Aerial photographs taken 1951.  
Polyconic projection. 1927 North American Datum  
10,000-foot grid based on Colorado coordinate system,  
central zone  
Dashed land lines indicate approximate locations  
Unchecked elevations are shown in brown  
1000-meter Universal Transverse Mercator grid ticks,  
zone 12, shown in blue  
To place on the predicted North American Datum 1983  
move the projection lines 6 meters north and  
56 meters east as shown by dashed corner ticks



THIS MAP COMPLIES WITH NATIONAL MAP ACCURACY STANDARDS  
FOR SALE BY U.S. GEOLOGICAL SURVEY, P.O. BOX 25286, DENVER, COLORADO 80225  
A FOLDER DESCRIBING TOPOGRAPHIC MAPS AND SYMBOLS IS AVAILABLE ON REQUEST



ROAD CLASSIFICATION  
Heavy-duty..... Light-duty.....  
Medium-duty..... Unimproved dirt .....

U.S. Route..... State Route.....

RECEIVED  
AUG 29 2003

JUL 22 2003  
USGS Library  
Reston, VA.  
Topo Archive

CAMEO. COLO.  
39108-B3-TF-024  
1955

DMA 4362 III NE-SERIES V877

3 1818 0041739 8

555711 109084 6  
9-BENT-1-09-Q-NB51