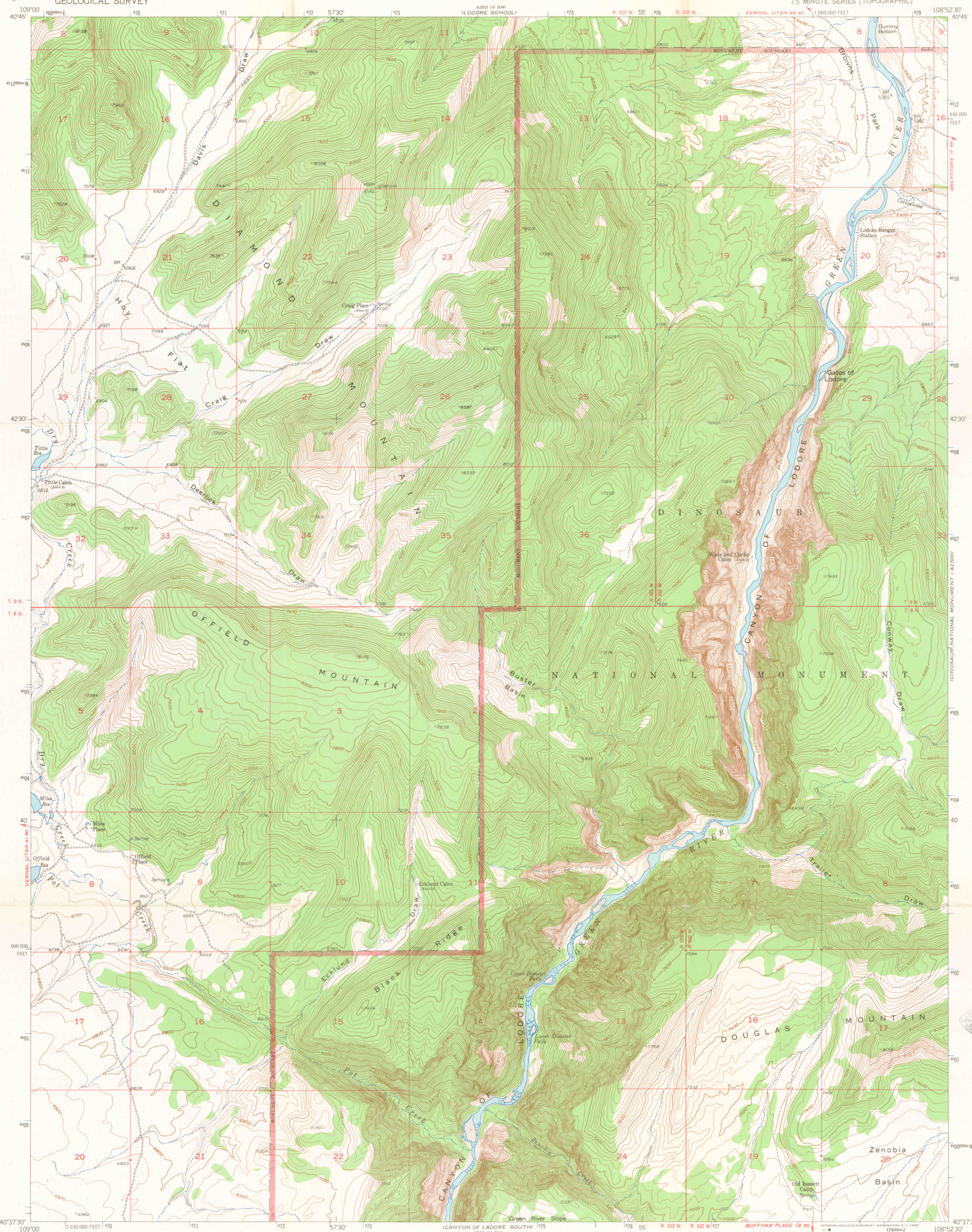
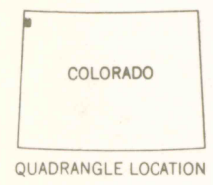
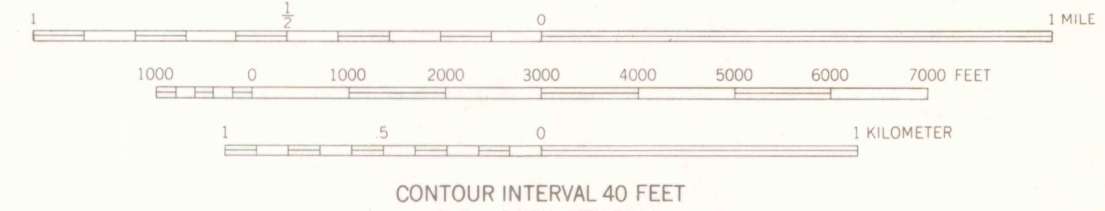
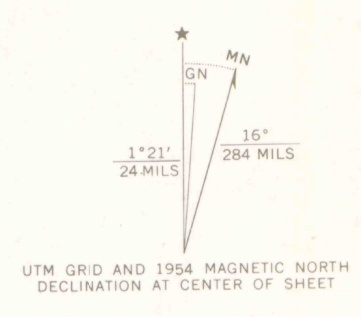


UNITED STATES
DEPARTMENT OF THE INTERIOR
GEOLOGICAL SURVEY

CANYON OF LODORE NORTH QUADRANGLE
COLORADO-MOFFAT CO.
7.5 MINUTE SERIES (TOPOGRAPHIC)



Mapped, edited, and published by the Geological Survey
Control by USGS and USC&GS
Topography from aerial photographs by multiplex methods
Aerial photographs taken 1951. Field check 1954
Polyconic projection, 1927 North American datum
10,000-foot grid based on Colorado coordinate system,
north zone
Certain land lines unsurveyed in T. 9 N., R. 102 W.,
T. 8 N., R. 102 W., and T. 8 N., R. 103 W.
1000-meter Universal Transverse Mercator grid ticks,
zone 12, shown in blue



ROAD CLASSIFICATION

Heavy-duty	Light-duty
Medium-duty	Unimproved dirt
U.S. Route	State Route

THIS MAP COMPLIES WITH NATIONAL MAP ACCURACY STANDARDS
FOR SALE BY U.S. GEOLOGICAL SURVEY, DENVER, COLORADO 80225, OR WASHINGTON, D.C. 20242
A FOLDER DESCRIBING TOPOGRAPHIC MAPS AND SYMBOLS IS AVAILABLE ON REQUEST

CANYON OF LODORE NORTH, COLO.
N4037.5-W10852.5/7.5
1954
AMS 4265 III NW-SERIES V877

G 3700
#24
#34
MAP ROOM



MAY 0 2 2007

AF
COLORED UNIVERSITY LIBRARIES