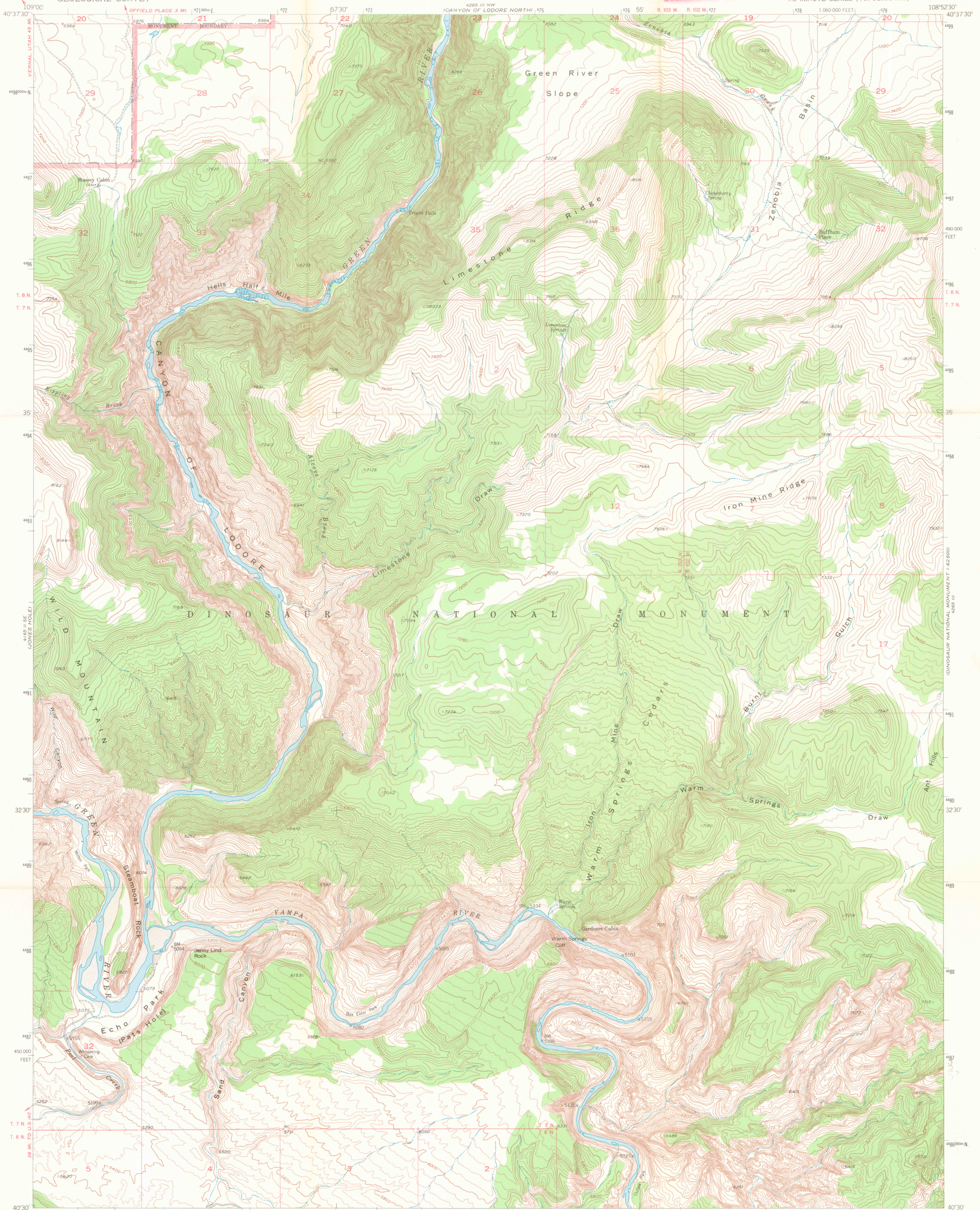
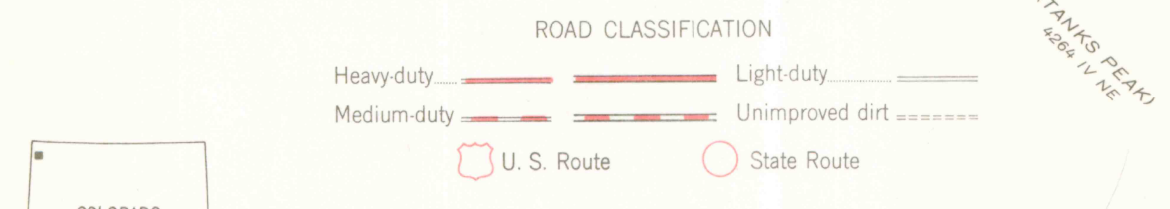
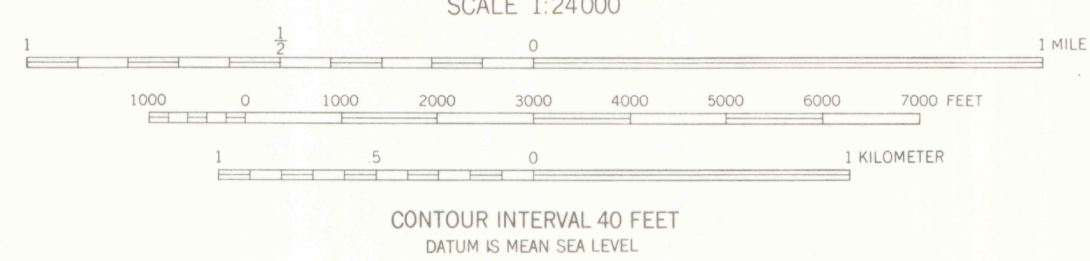
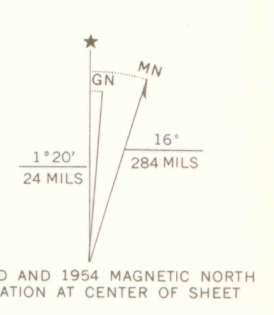


ALPINE RESCUE TEAM
BOX 304
EVERGREEN, COLORADO

4265 III SW
DINOSAUR NATIONAL
MONUMENT 1:62,500



Mapped, edited, and published by the Geological Survey
Control by USGS and USC&GS
Topography from aerial photographs by multiplex methods
Aerial photographs taken 1951. Field check 1954
Polyconic projection. 1927 North American datum
10,000-foot grid based on Colorado coordinate system,
north zone
Certain land lines unsurveyed in T. 6 N., Rs. 102 and 103 W.,
T. 7 N., Rs. 102 and 103 W., and T. 8 N., R. 103 W.
1000-meter Universal Transverse Mercator grid ticks,
zone 12, shown in blue



THIS MAP COMPLIES WITH NATIONAL MAP ACCURACY STANDARDS
FOR SALE BY U.S. GEOLOGICAL SURVEY, DENVER, COLORADO 80225 OR WASHINGTON, D.C. 20242
A FOLDER DESCRIBING TOPOGRAPHIC MAPS AND SYMBOLS IS AVAILABLE ON REQUEST

CANYON OF LODORE SOUTH, COLO.
N4030-W10852 5/7.5
1954

AMS 4265 III SW—SERIES V877

STUNTZ RESERVOIR
1/4 1/4 AC

1954 12 2005
FRANK BEARD
1/4 1/4 AC

G 3700
824
64
ROOM