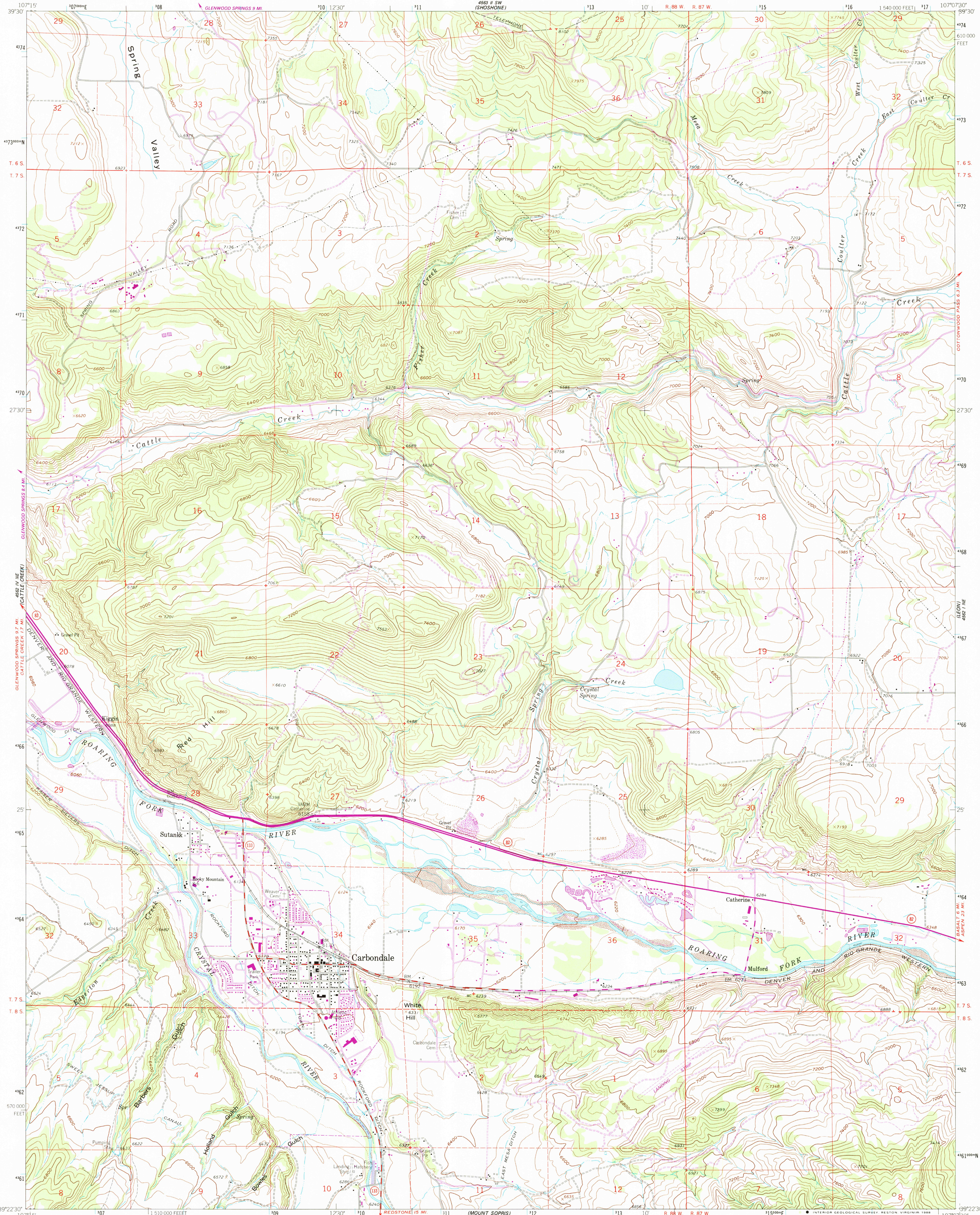


UNITED STATES  
DEPARTMENT OF THE INTERIOR  
GEOLOGICAL SURVEY

CARBONDALE QUADRANGLE  
COLORADO-GARFIELD CO.  
7.5 MINUTE SERIES (TOPOGRAPHIC)



Maped, edited, and published by the Geological Survey

Control by USGS and NOS/NOAA

Topography by photogrammetric methods from aerial photographs taken 1960. Field checked 1961.

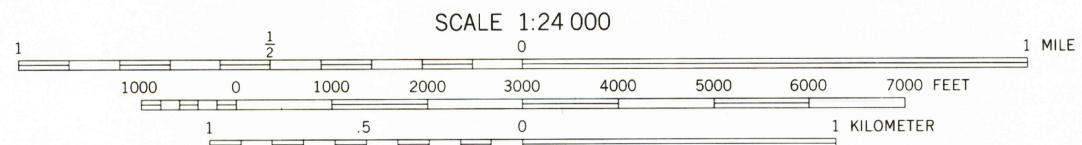
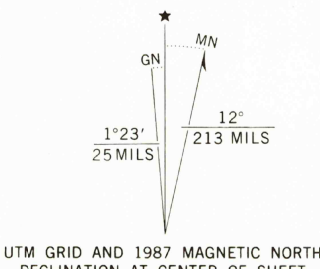
Polyconic projection. 1927 North American Datum

10,000-foot grid based on Colorado coordinate system, central zone

1000-meter Universal Transverse Mercator grid ticks, zone 13, shown in blue

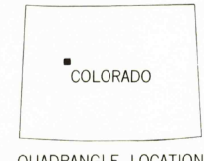
Fine red dashed lines indicate selected fence and field lines where generally visible on aerial photographs. This information is un-checked

To place on the predicted North American Datum 1983 move the projection lines 5 meters north and 53 meters east as shown by dashed corner ticks



CONTOUR INTERVAL 40 FEET  
DOTTED LINES REPRESENT 20-FOOT CONTOURS  
NATIONAL GEODETIC VERTICAL DATUM OF 1929

THIS MAP COMPLIES WITH NATIONAL MAP ACCURACY STANDARDS  
FOR SALE BY U. S. GEOLOGICAL SURVEY, DENVER, COLORADO 80225, OR RESTON, VIRGINIA 22092  
A FOLDER DESCRIBING TOPOGRAPHIC MAPS AND SYMBOLS IS AVAILABLE ON REQUEST



Revisions shown in purple compiled from aerial photographs taken 1983 and other source data. Partial field check by U. S. Forest Service. Map edited 1987

ROAD CLASSIFICATION	
Primary highway, hard surface	Light-duty road, hard or improved surface
Secondary highway, hard surface	Unimproved road
Interstate Route	U. S. Route
	State Route

CARBONDALE, COLO.  
39107-D2-TF-024

1961  
PHOTOREVISED 1987  
DMA 4562 I NW-SERIES V877

REC'D FILE COPY

SEP 12 1988

USGS NHD HISTORICAL MAP