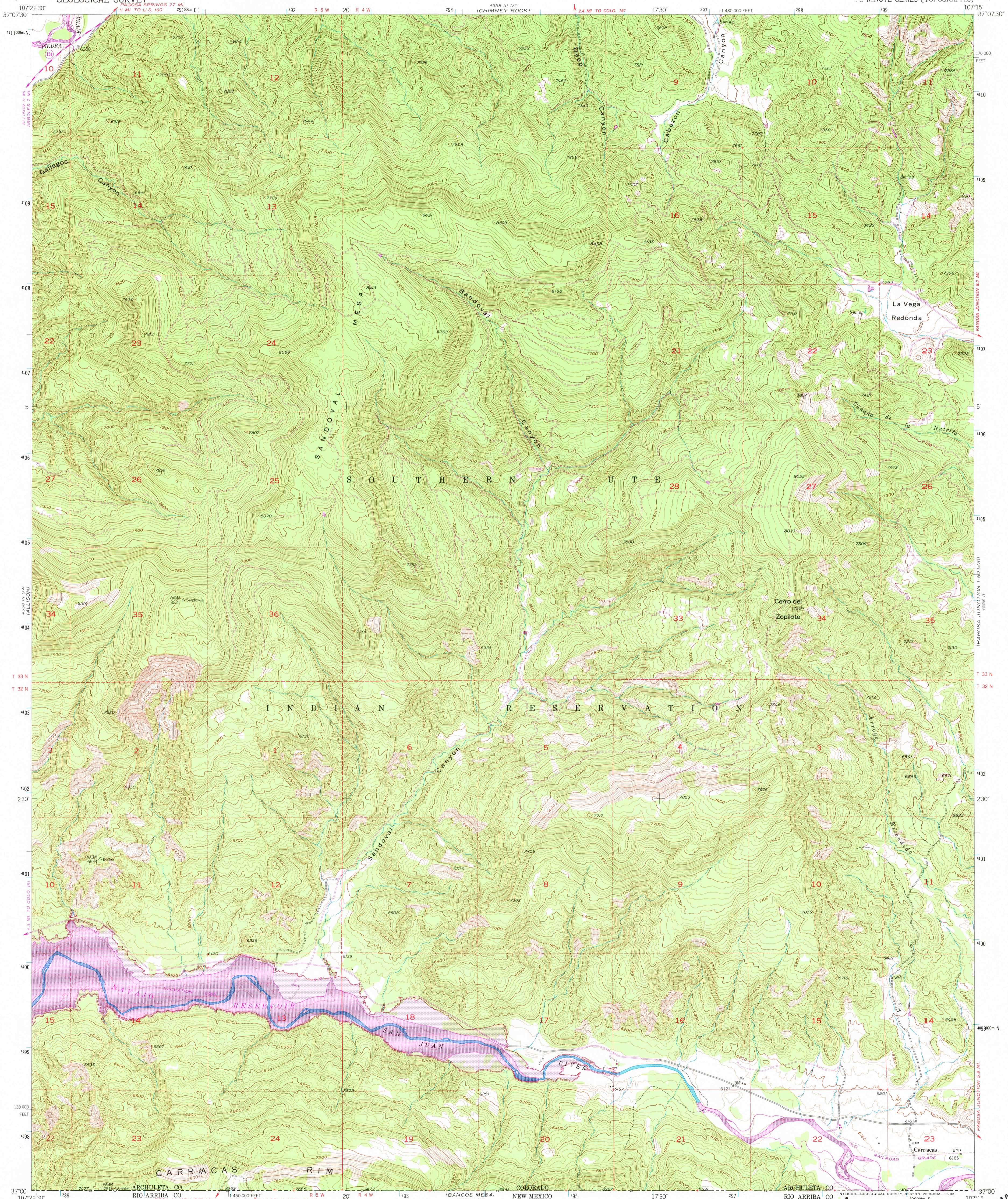


UNITED STATES
DEPARTMENT OF THE INTERIOR
GEOLOGICAL SURVEY

CARRACAS QUADRANGLE
COLORADO-ARCHULETA CO.
7.5 MINUTE SERIES (TOPOGRAPHIC)

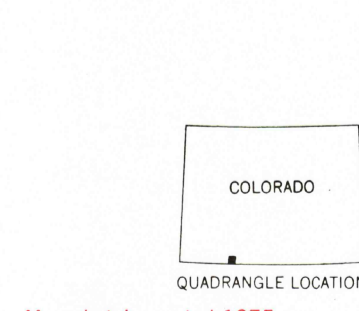
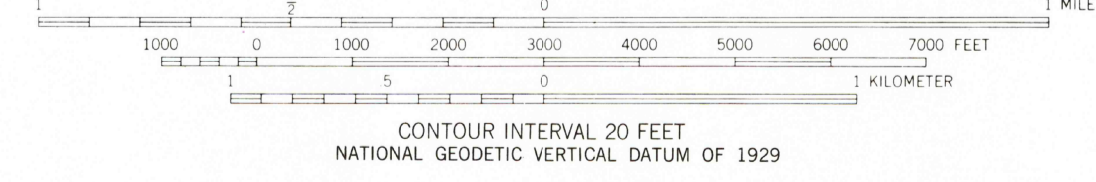
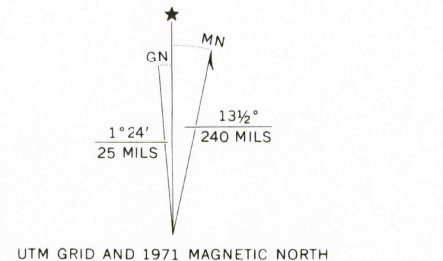


Mapped, edited, and published by the Geological Survey

Control by USGS and USC&GS
Topography by photogrammetric methods from aerial photographs taken 1950. Field check 1954
Polyconic projection. 1927 North American datum
10,000-foot grid based on Colorado coordinate system, south zone
1000-meter Universal Transverse Mercator grid ticks, zone 13, shown in blue
Certain land lines in T. 33 N. R. 4 W. are unsurveyed

Revisions shown in purple compiled from aerial photographs taken 1971. This information not field checked
Areas covered by dashed light-purple pattern are subject to controlled inundation to 6101 feet

Too place on the predicted North American Datum 1983 move the projection lines 2 meters north and 544 meters east as shown by dashed corner ticks
There may be private inholdings within the boundaries of the National or State reservations shown on this map



ROAD CLASSIFICATION

Heavy-duty	Light-duty
Medium-duty	Unimproved dirt
U. S. Route	State Route

THIS MAP COMPLIES WITH NATIONAL MAP ACCURACY STANDARDS
FOR SALE BY U. S. GEOLOGICAL SURVEY, DENVER, COLORADO 80225, OR RESTON, VIRGINIA 22092
A FOLDER DESCRIBING TOPOGRAPHIC MAPS AND SYMBOLS IS AVAILABLE ON REQUEST

Map photoinspected 1975
No major culture or drainage changes observed

CARRACAS, COLO.
N3700-W10715/7.5
1954
PHOTOREVISED 1971
DMA 4558 III SE-SERIES V877
PHOTOINSPECTED 1975

MAY 26 1982
CARRACAS CANYON