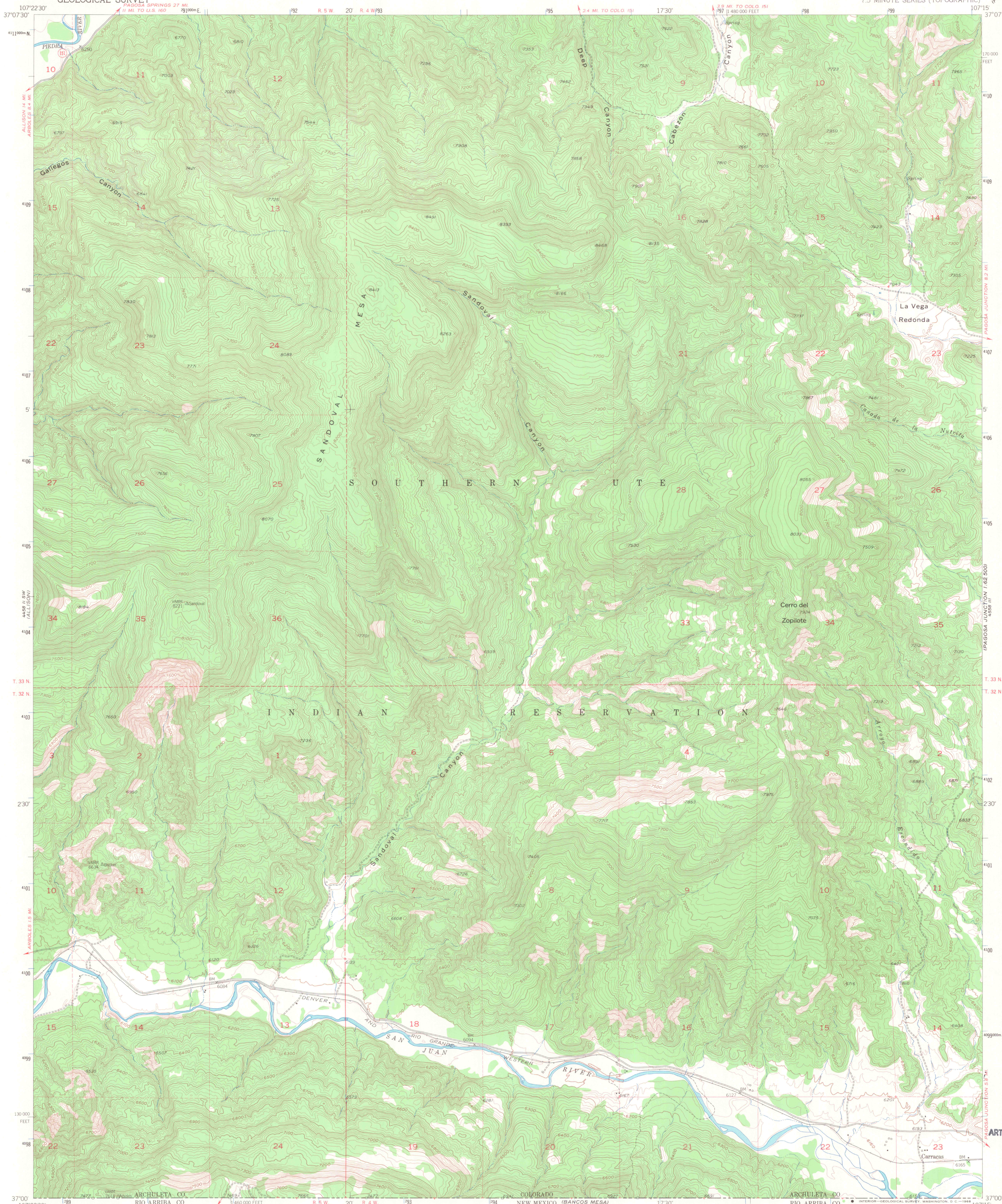


UNITED STATES
DEPARTMENT OF THE INTERIOR
GEOLOGICAL SURVEY

CARRACAS QUADRANGLE
COLORADO-ARCHULETA CO.
7.5 MINUTE SERIES (TOPOGRAPHIC)



Maped, edited, and published by the Geological Survey

Control by USGS and USC&GS

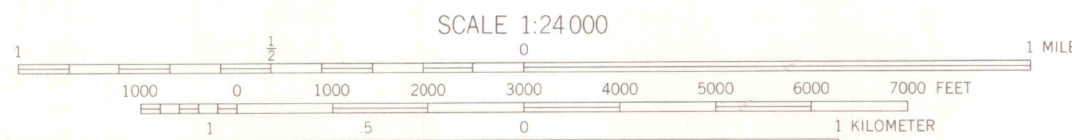
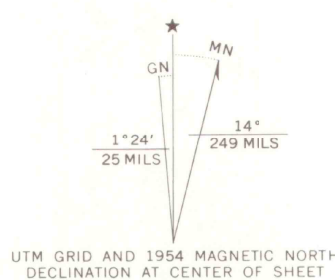
Topography from aerial photographs by multiplex methods
Aerial photographs taken 1950. Field check 1954

Polycyclic projection. 1927 North American datum
10,000-foot grid based on Colorado coordinate system,
south zone

Dashed land lines indicate approximate locations
Certain land lines in T. 33 N. R. 4 W. are unsurveyed

Unchecked elevations are shown in brown

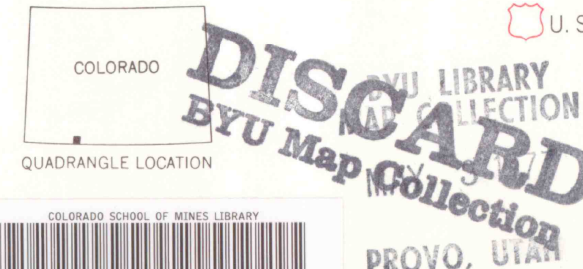
1000-meter Universal Transverse Mercator grid ticks,
zone 13, shown in blue



CONTOUR INTERVAL 20 FEET
DATUM IS MEAN SEA LEVEL

THIS MAP COMPLIES WITH NATIONAL MAP ACCURACY STANDARDS
FOR SALE BY U.S. GEOLOGICAL SURVEY, DENVER, COLORADO 80225, OR WASHINGTON, D. C. 20242
A FOLDER DESCRIBING TOPOGRAPHIC MAPS AND SYMBOLS IS AVAILABLE ON REQUEST

ROAD CLASSIFICATION
Heavy-duty ——— Light-duty ———
Medium-duty ——— Unimproved dirt ———
U. S. Route ——— State Route ———



CARRACAS, COLO.

N3700-W10715/7.5

1954

AMS 4458 II SE-SERIES V877



MAY 10 1983
MAP ROOM
ARTHUR LAKES LIBRARY

201
22
65
col