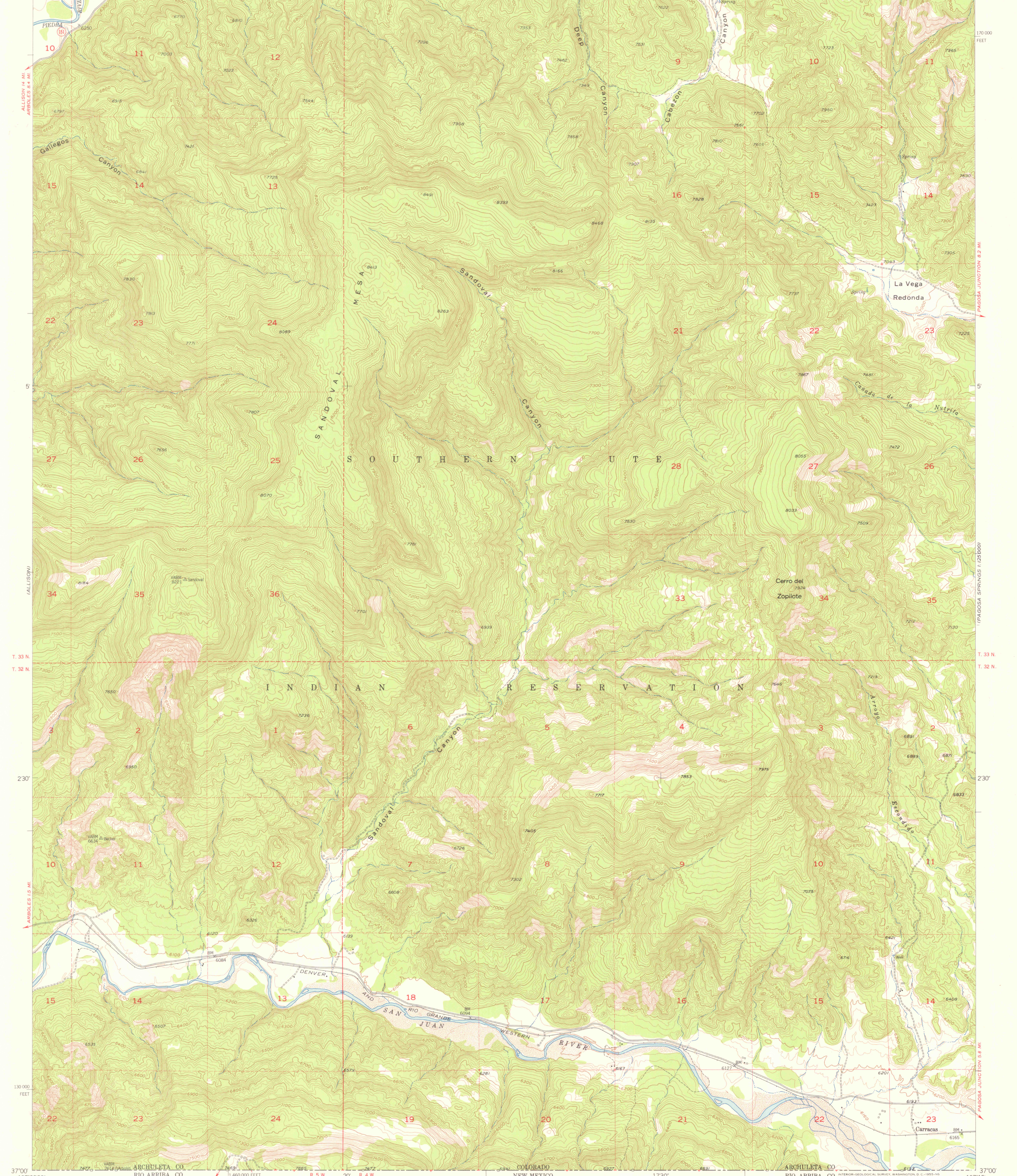
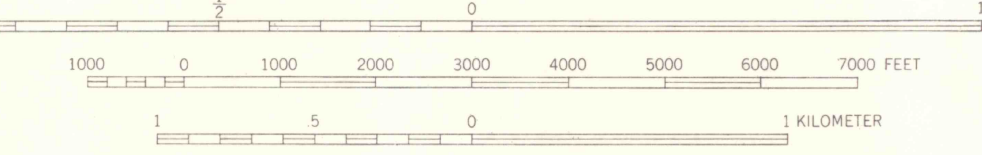
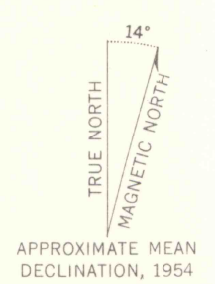


107°22'30" 37°07'30" 107°15' 37°07'30" R. 5 W. 20' R. 4 W. (PAGOSA SPRINGS 1:125,000) 2.4 MI. TO COLO. 151 1730' 3.9 MI. TO COLO. 151 1480,000 FEET



37°00' 107°22'30" ARCHULETA CO. RIO ARriba CO. COLORADO NEW MEXICO ARCHULETA CO. RIO ARriba CO. 130,000 FEET 1460,000 FEET 1:24,000 SCALE R. 5 W. 20' R. 4 W. DULCE, N. MEX. 28 MI. 1730' 107°15'

Mapped, edited, and published by the Geological Survey
Control by USGS and USC&GS
Topography from aerial photographs by multiplex methods
Aerial photographs taken 1950. Field check 1954
Polyconic projection. 1927 North American datum
10,000-foot grid based on Colorado coordinate system,
south zone
Dashed land lines indicate approximate locations
Certain land lines in T. 33 N. R. 4 W. are unsurveyed
Unchecked elevations are shown in brown



CONTOUR INTERVAL 20 FEET
DATUM IS MEAN SEA LEVEL



ROAD CLASSIFICATION
Heavy-duty ——— Light-duty ———
Medium-duty ——— Unimproved dirt ———
U. S. Route (red line with shield) State Route (red line with circle)

CARRACAS, COLO.
N3700-W10715/7.5
1954

FOR SALE BY U.S. GEOLOGICAL SURVEY, FEDERAL CENTER, DENVER, COLORADO OR WASHINGTON 25, D. C.
A FOLDER DESCRIBING TOPOGRAPHIC MAPS AND SYMBOLS IS AVAILABLE ON REQUEST

OFFICE COPY

LIBRARY USE ONLY