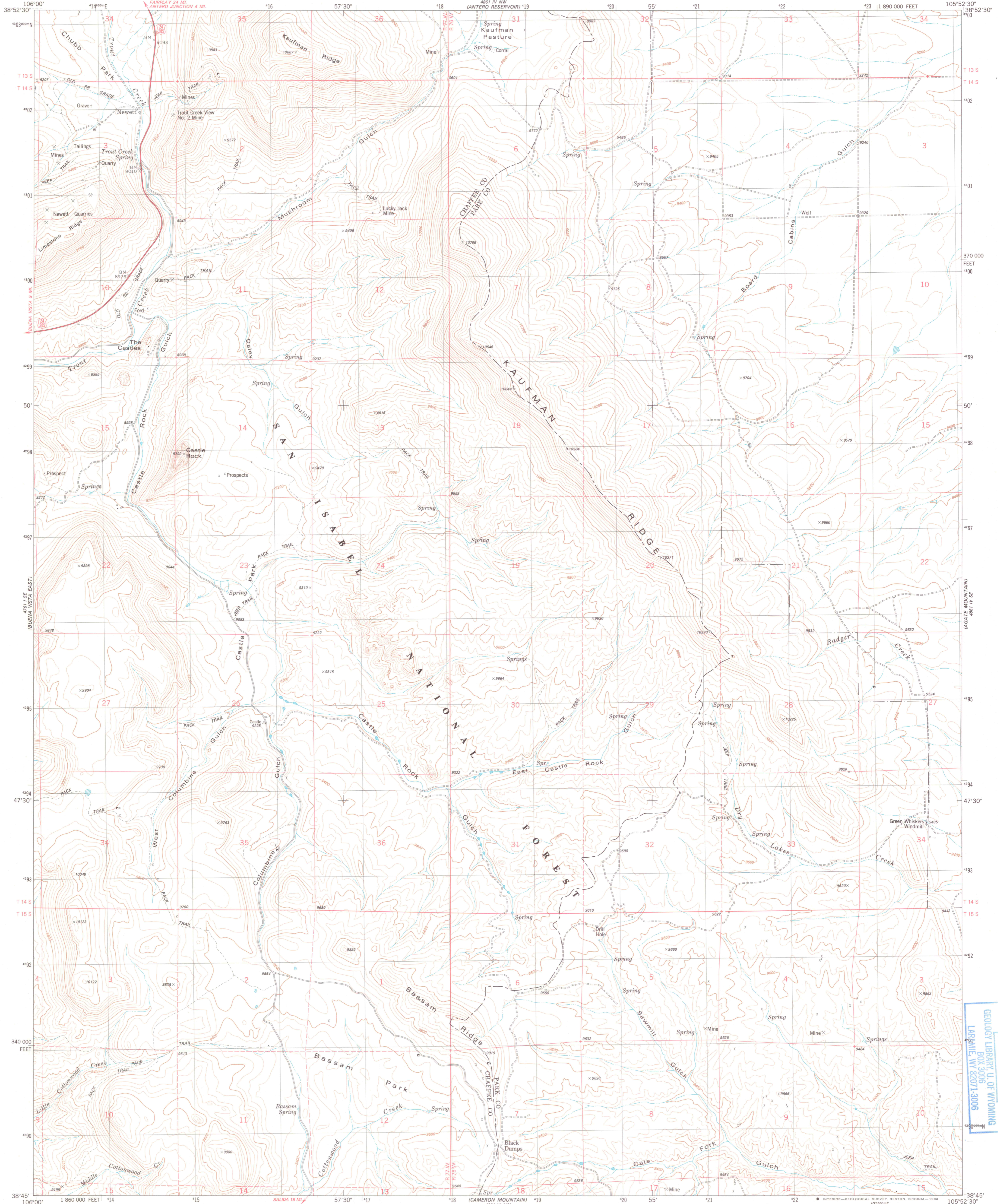
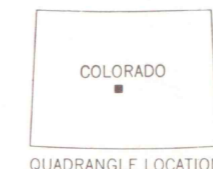
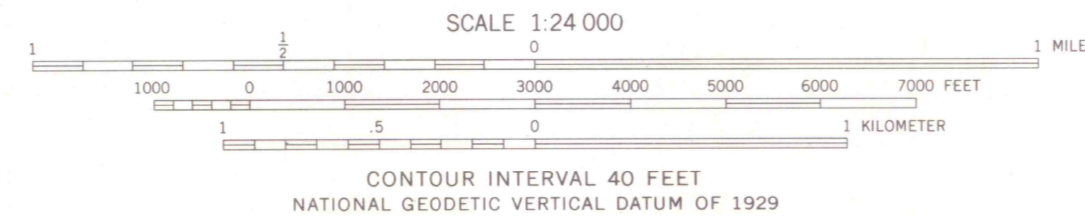
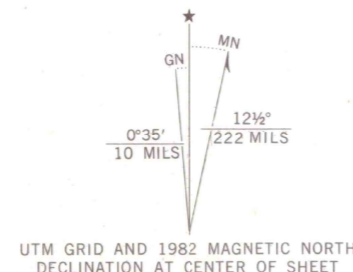


UNITED STATES  
DEPARTMENT OF THE INTERIOR  
GEOLOGICAL SURVEY

CASTLE ROCK GULCH QUADRANGLE  
COLORADO  
7.5 MINUTE SERIES (TOPOGRAPHIC)  
SW/4 ANTERO RESERVOIR 15' QUADRANGLE  
1:890 000 FEET



Mapped, edited, and published by the Geological Survey  
Control by USGS and NOS/NOAA  
Topography by photogrammetric methods from aerial photographs  
taken 1975. Field checked 1976. Map edited 1983  
Projection and 10,000-foot grid ticks: Colorado  
coordinate system, central zone (Lambert conformal conic)  
1000-meter Universal Transverse Mercator grid, zone 13  
1927 North American datum  
To place on the predicted North American Datum 1983  
move the projection lines 4 meters north and  
50 meters east as shown by dashed corner ticks  
Fine red dashed lines indicate selected fence lines  
There may be private inholdings within the boundaries of  
the National or State reservations shown on this map



ROAD CLASSIFICATION

Primary highway, hard surface ——— Light-duty road, hard or improved surface ———  
Secondary highway, hard surface ——— Unimproved road ———

○ Interstate Route □ U.S. Route ○ State Route

**GEOLOGICAL SURVEY OF WYOMING**  
CASTLE ROCK GULCH, COLO.  
SW/4 ANTERO RESERVOIR 15' QUADRANGLE  
N3845-W10552.5/7.5

THIS MAP COMPLIES WITH NATIONAL MAP ACCURACY STANDARDS  
FOR SALE BY U.S. GEOLOGICAL SURVEY, DENVER, COLORADO 80225, OR RESTON, VIRGINIA 22092  
A FOLDER DESCRIBING TOPOGRAPHIC MAPS AND SYMBOLS IS AVAILABLE ON REQUEST

1983  
DMA 4881 IV, SW-SERIES 1/877

DEPOSITORY  
GEOLOGY LIBRARY U. OF WYOMING  
ROOM 3006  
LARAMIE, WY 82071-3006

GEOLOGY