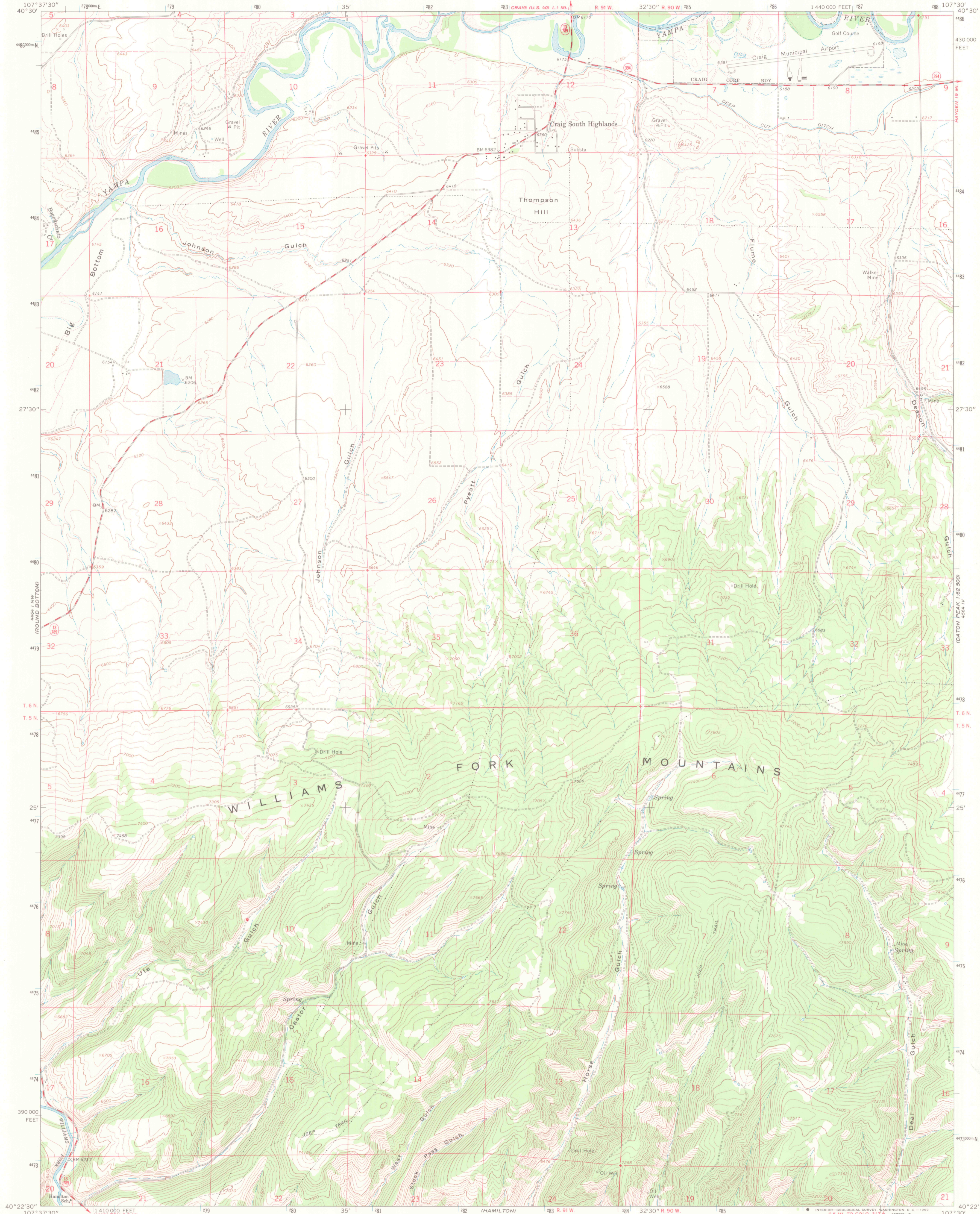
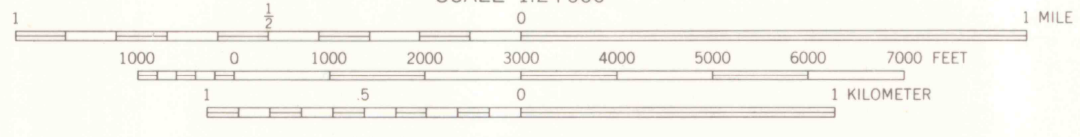
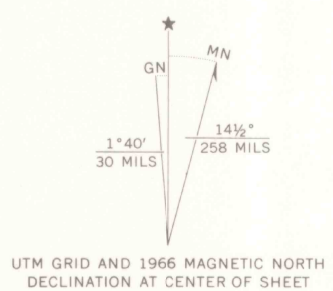


ELK HEAD PEAK
5888 ft
62 200



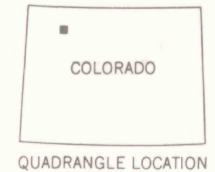
Mapped, edited, and published by the Geological Survey
Control by USGS and USC&GS

Topography by photogrammetric methods from aerial
photographs taken 1962. Field checked 1966.
Polyconic projection. 1927 North American datum
10,000-foot grid based on Colorado coordinate system,
north zone
1000-meter Universal Transverse Mercator grid ticks,
zone 13, shown in blue
Fine red dashed lines indicate selected fence lines



CONTOUR INTERVAL 40 FEET
DOTTED LINES REPRESENT 20-FOOT CONTOURS
DATUM IS MEAN SEA LEVEL
MAP AND AIR PHOTO LIBRARY
UNIVERSITY OF WISCONSIN—MILWAUKEE

THIS MAP COMPLIES WITH NATIONAL MAP ACCURACY STANDARDS
FOR SALE BY U. S. GEOLOGICAL SURVEY, DENVER, COLORADO 80225, OR WASHINGTON, D. C. 20242
A FOLDER DESCRIBING TOPOGRAPHIC MAPS AND SYMBOLS IS AVAILABLE ON REQUEST



ROAD CLASSIFICATION
Medium-duty ——— Light-duty ———
Unimproved dirt ———

State Route ———
CASTOR GULCH, COLO.
NE/4 MONUMENT BUTTE 15' QUADRANGLE
N4022.5-W10730.75

MONUMENT BUTTE
4861 ft
15 W

JUL 1 1967

ARTHUR CARPENTARY
COLORADO SCHOOL OF MINES

G 3700
\$24
MAP ROOM