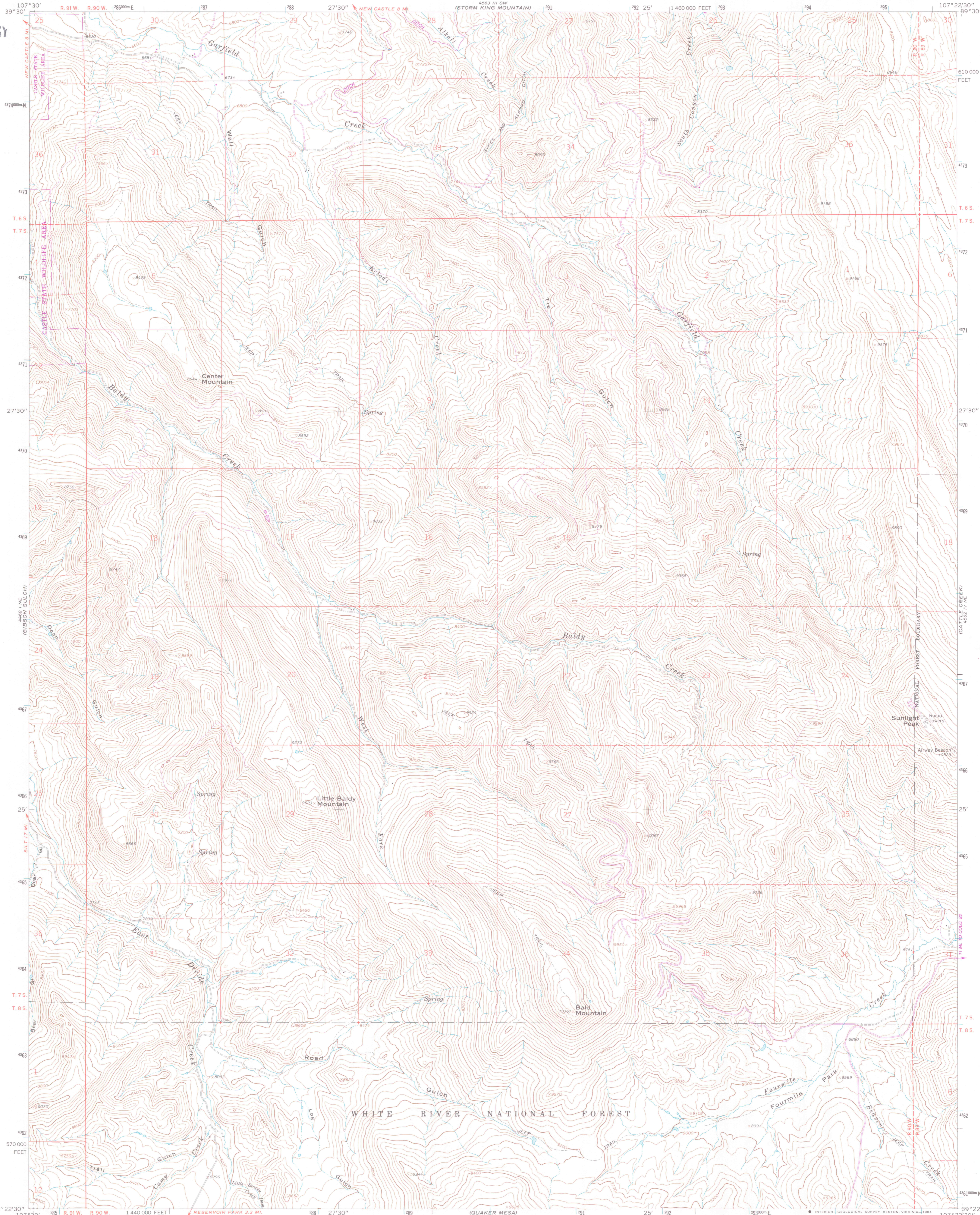


GEOLOGY



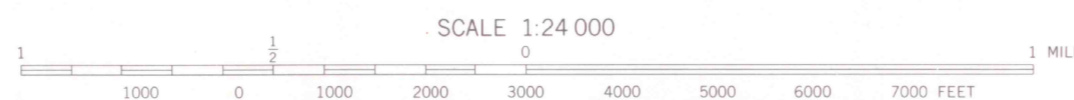
Mapped, edited, and published by the Geological Survey

Control by USGS and NOS/NOAA  
Topography by photogrammetric methods from aerial photographs taken 1962. Field checked 1963  
Polyconic projection. 1927 North American Datum  
10,000-foot grid based on Colorado coordinate system, central zone  
1000-meter Universal Transverse Mercator grid ticks, zone 13, shown in blue

Fine red dashed lines indicate selected fence lines  
Where omitted, land lines have not been established  
To place on the predicted North American Datum 1983  
move the projection lines 5 meters north and  
54 meters east as shown by dashed corner ticks

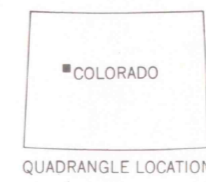
There may be private inholdings within the boundaries  
of the National or State reservations shown on this map

UTM GRID AND 1982 MAGNETIC NORTH  
DECLINATION AT CENTER OF SHEET



SCALE 1:24 000  
CONTOUR INTERVAL 40 FEET  
NATIONAL GEODETIC VERTICAL DATUM OF 1929

THIS MAP COMPLIES WITH NATIONAL MAP ACCURACY STANDARDS  
FOR SALE BY U. S. GEOLOGICAL SURVEY, DENVER, COLORADO 80225, OR RESTON, VIRGINIA 22092  
A FOLDER DESCRIBING TOPOGRAPHIC MAPS AND SYMBOLS IS AVAILABLE ON REQUEST



QUADRANGLE LOCATION

Revisions shown in purple compiled from aerial photographs  
taken 1979 and other source data. This information not  
field checked. Map edited 1982

LIBRARY  
DOCUMENT COLLECTION  
UNIVERSITY OF WYOMING  
UNIVERSITY CENTER MOUNTAIN, COLO.  
LARAMIE  
FFR 02 1989  
39107-04-TF-024

1963  
PHOTOREVISED 1982  
DMA 4562 IV NW—SERIES V877

GEOLOGY