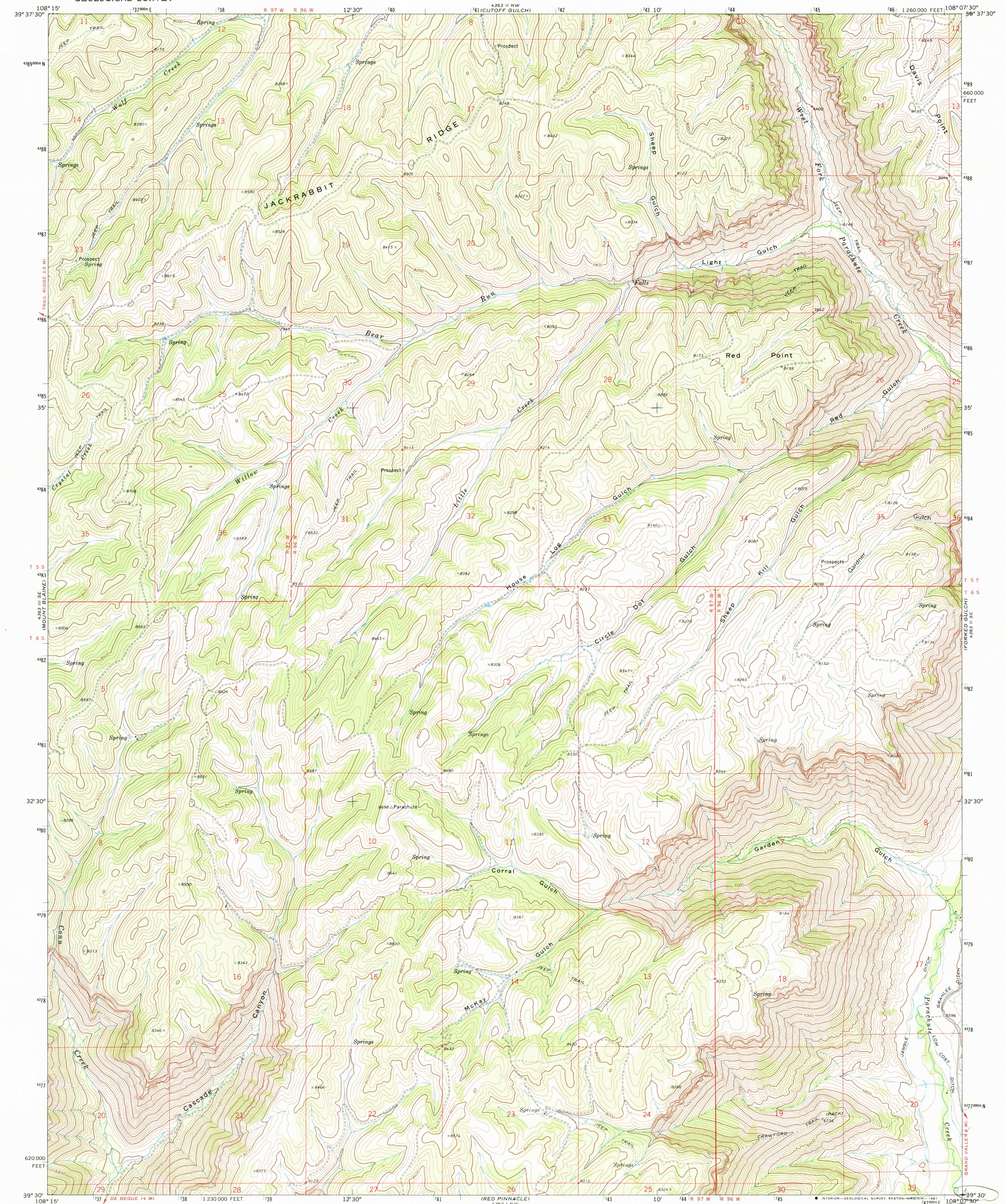
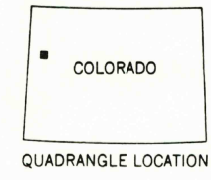
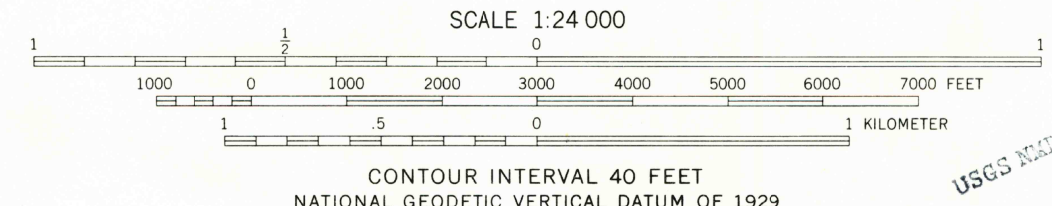
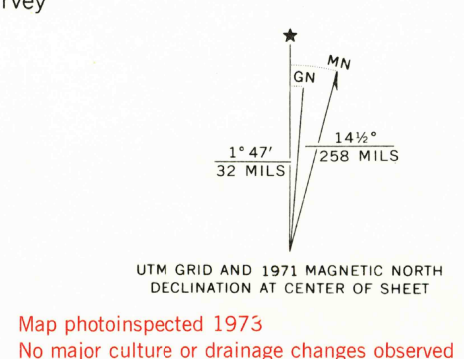


UNITED STATES
DEPARTMENT OF THE INTERIOR
GEOLOGICAL SURVEY

CIRCLE DOT GULCH QUADRANGLE
COLORADO—GARFIELD CO.
7.5 MINUTE SERIES (TOPOGRAPHIC)



Mapped, edited, and published by the Geological Survey
Control by USGS and USC&GS
Topography by photogrammetric methods from aerial photographs taken 1970. Field checked 1971
Projection and 10,000-foot grid ticks: Colorado coordinate system, central zone (Lambert conical conic) 1000-meter Universal Transverse Mercator grid ticks, zone 12, shown in blue. 1927 North American datum
Fine red dashed lines indicate selected fence lines
To place on the predicted North American Datum 1983 move the projection lines 6 meters north and 56 meters east as shown by dashed corner ticks



ROAD CLASSIFICATION
Primary highway, hard surface
Secondary highway, hard surface
Interstate Route
U.S. Route
State Route
Light duty road, hard or improved surface
Unimproved road

THIS MAP COMPLIES WITH NATIONAL MAP ACCURACY STANDARDS
FOR SALE BY U.S. GEOLOGICAL SURVEY, DENVER, COLORADO 80225, OR RESTON, VIRGINIA 22092
A FOLDER DESCRIBING TOPOGRAPHIC MAPS AND SYMBOLS IS AVAILABLE ON REQUEST

CIRCLE DOT GULCH, COLO.
N3930-W10807.5/7.5
1971
PHOTOINSPECTED 1973
DMA 4363 II SW—SERIES V877

USGS AND HISTORICAL TIME
APR 30 1991
REU FILE 002