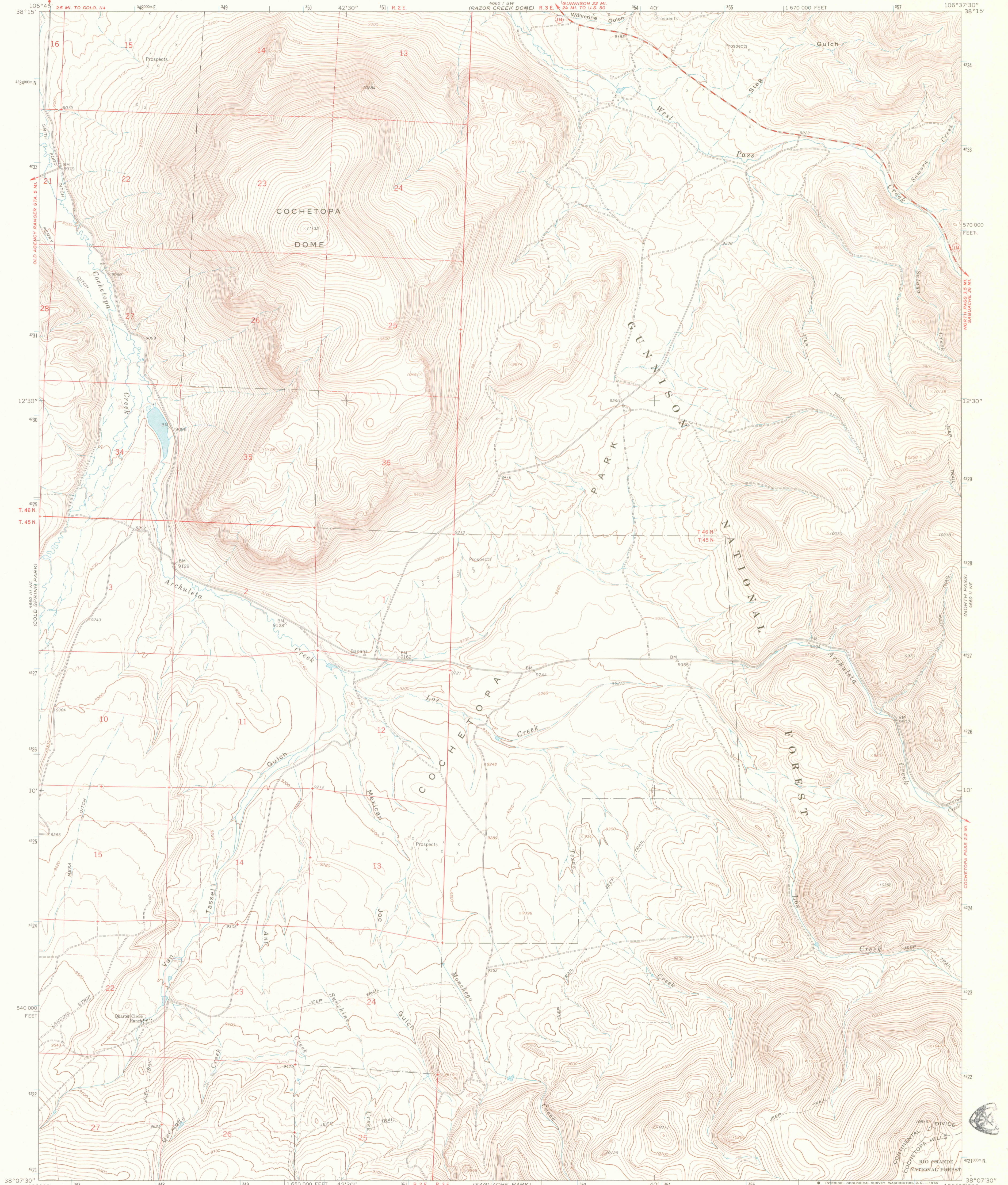
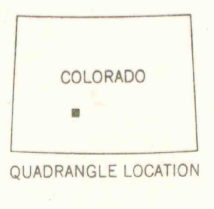
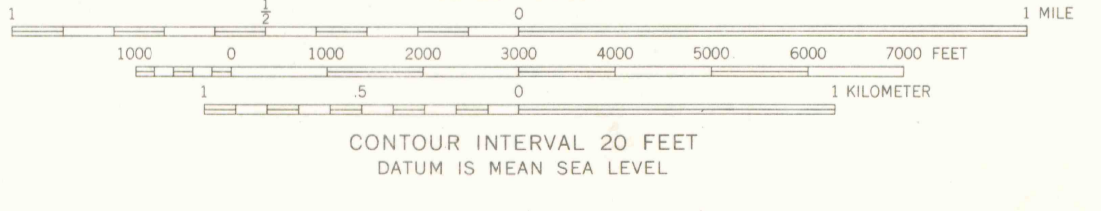
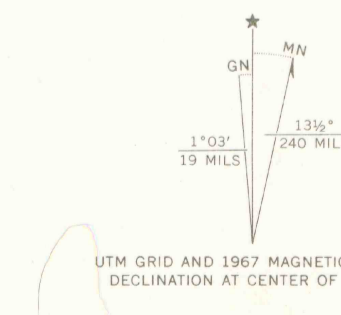


UNITED STATES  
DEPARTMENT OF THE INTERIOR  
GEOLOGICAL SURVEY

COCHETOPA PARK QUADRANGLE  
COLORADO-SAGUACHE CO.  
7.5 MINUTE SERIES (TOPOGRAPHIC)



Mapped by the U. S. Forest Service  
Edited and published by the Geological Survey  
Control by USGS, USC&GS, and U. S. Forest Service  
Topography by photogrammetric methods from aerial photographs taken 1961. Field checked by USGS 1967  
Polyconic projection. 1927 North American datum  
10,000-foot grid based on Colorado coordinate system, south zone  
1000-meter Universal Transverse Mercator grid ticks, zone 13, shown in blue  
Fine red dashed lines indicate selected fence lines  
Certain land lines are omitted because of insufficient data



ROAD CLASSIFICATION  
Medium-duty ——— Light-duty ———  
Unimproved dirt - - - - -  
State Route ○

THIS MAP COMPLIES WITH NATIONAL MAP ACCURACY STANDARDS  
FOR SALE BY U. S. GEOLOGICAL SURVEY, DENVER, COLORADO 80225, OR WASHINGTON, D. C. 20242  
A FOLDER DESCRIBING TOPOGRAPHIC MAPS AND SYMBOLS IS AVAILABLE ON REQUEST

COCHETOPA PARK, COLO.  
N3807.5-W10637.5/7.5  
1967  
AMS 4660 II NW—SERIES V877

G 3700  
#24  
.G4  
MAP ROOM

OFFICE COPY  
LIBRARY USE ONLY