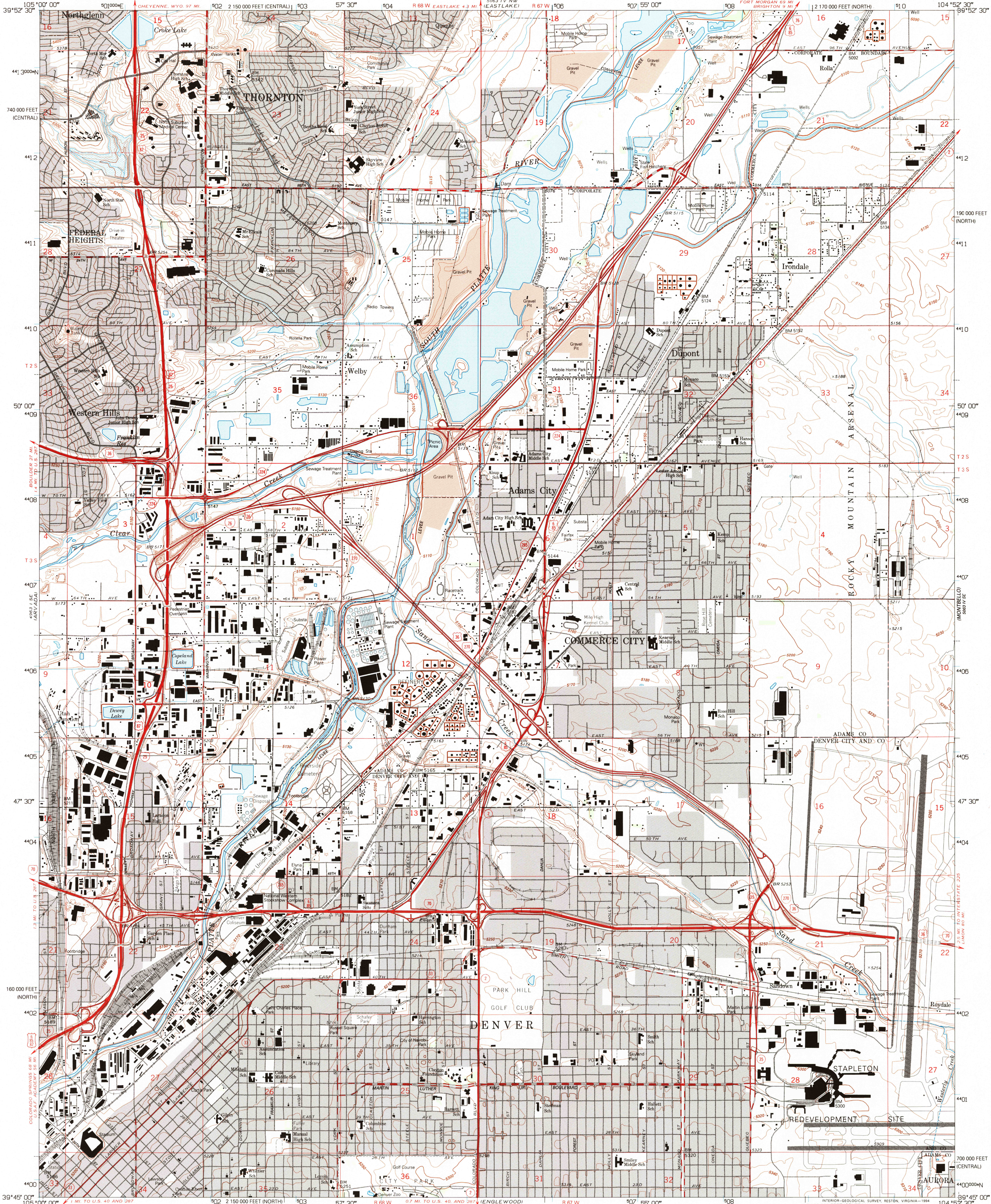
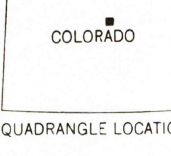
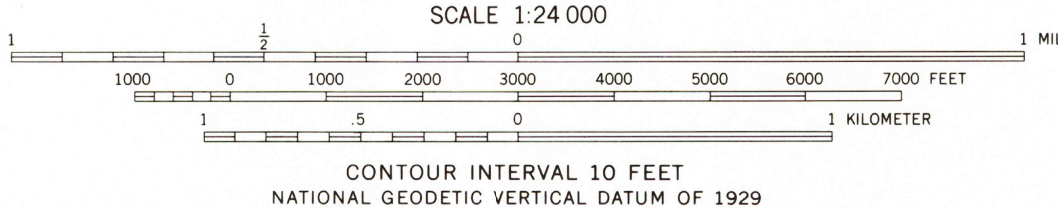
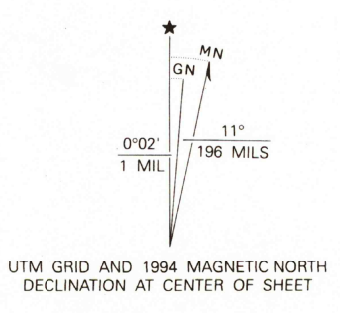


UNITED STATES  
DEPARTMENT OF THE INTERIOR  
GEOLOGICAL SURVEY

COMMERCE CITY QUADRANGLE  
COLORADO  
7.5 MINUTE SERIES (TOPOGRAPHIC)



Produced by the United States Geological Survey  
Control by USGS and NOS/NOAA  
Compiled from aerial photographs taken 1964. Field checked 1965  
Revised from aerial photographs taken 1988 and other sources  
Map edited 1994. Contours and land elevations have not been  
revised and may conflict with other content  
North American Datum of 1927 (NAD 27). Projection and  
blue 1000-meter Universal Transverse Mercator ticks, zone 13  
10000-foot ticks: Colorado Coordinate System north and central zones  
North American Datum of 1983 (NAD 83) is shown by dashed  
corner ticks. The values of the shift between NAD 27 and NAD 83  
for 7.5-minute intersections are obtainable from National Geodetic  
Survey NADCON software  
There may be private inholdings within the boundaries of the  
National or State reservations shown on this map  
Gray tint indicates areas in which only landmark buildings are shown  
Areas covered by dashed light-blue pattern are subject to  
controlled inundation



ROAD CLASSIFICATION  
Heavy-duty ——— Light-duty ———  
Medium-duty ——— Unimproved dirt ———  
Interstate Route ——— U.S. Route ——— State Route ———

COMMERCE CITY, CO  
39104-G8-TF-024  
1985  
REVISED 1994  
DMA 5063 IV SW-SERIES V877

