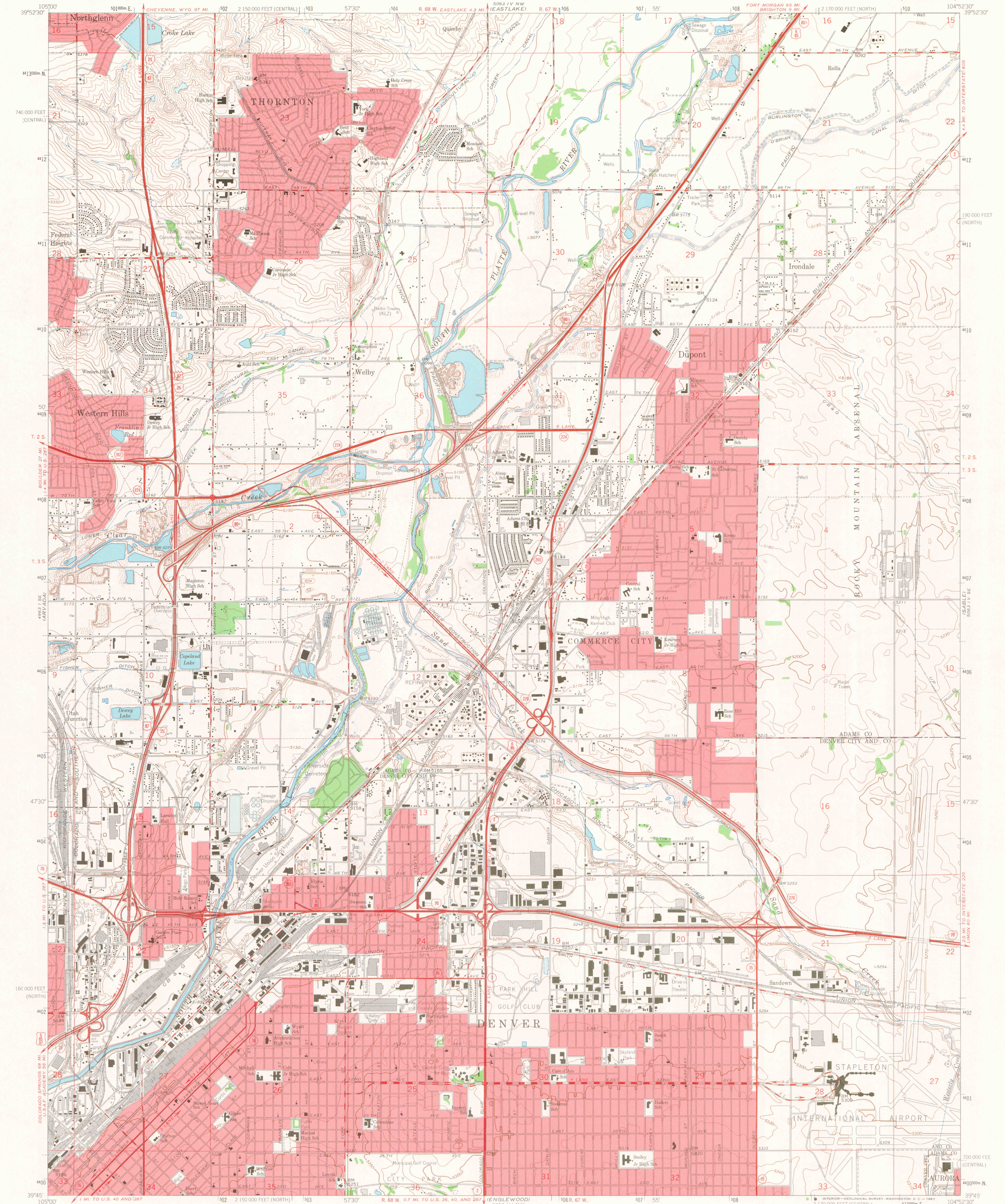


UNITED STATES
DEPARTMENT OF THE INTERIOR
GEOLOGICAL SURVEY

COMMERCE CITY QUADRANGLE
COLORADO
7.5 MINUTE SERIES (TOPOGRAPHIC)



Maped, edited, and published by the Geological Survey

Control by USGS and USC&GS

Topography by photogrammetric methods from aerial photographs
taken 1964. Field checked 1965. Supersedes Derby map dated 1957

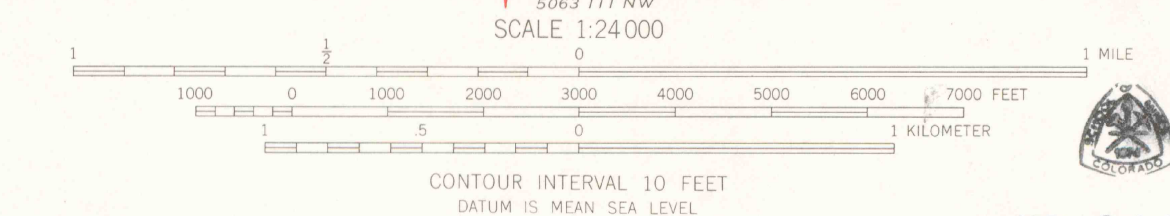
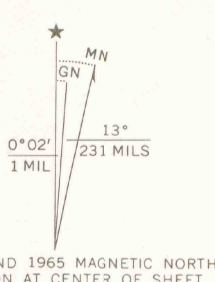
Polycolor projection. 1927 North American datum
10,000-foot grids based on Colorado coordinate system,
north and central zones

1000-meter Universal Transverse Mercator grid ticks,
zone 13, shown in blue

Red tint indicates areas in which only landmark buildings are shown

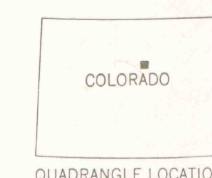
Fine red dashed lines indicate selected fence lines

This map does not reflect ground conditions resulting
from flood of June 1965



JAN 19 2006

MAP ROOM
ARTHUR LAKES LIBRARY
COLORADO SCHOOL OF MINES



OFFICE COPY
LIBRARY USE ONLY

ROAD CLASSIFICATION
Heavy-duty ——— Light-duty ———
Medium-duty ——— Unimproved dirt ———
Interstate Route ——— U.S. Route ——— State Route ———

COMMERCE CITY, COLO.
N3945-W10452 5/7.5

1965

AMS 5063 IV SW-SERIES V877

G 3700
s24
.G4
MAP ROOM