

JEFFERSON

Map L900
5 C 7371

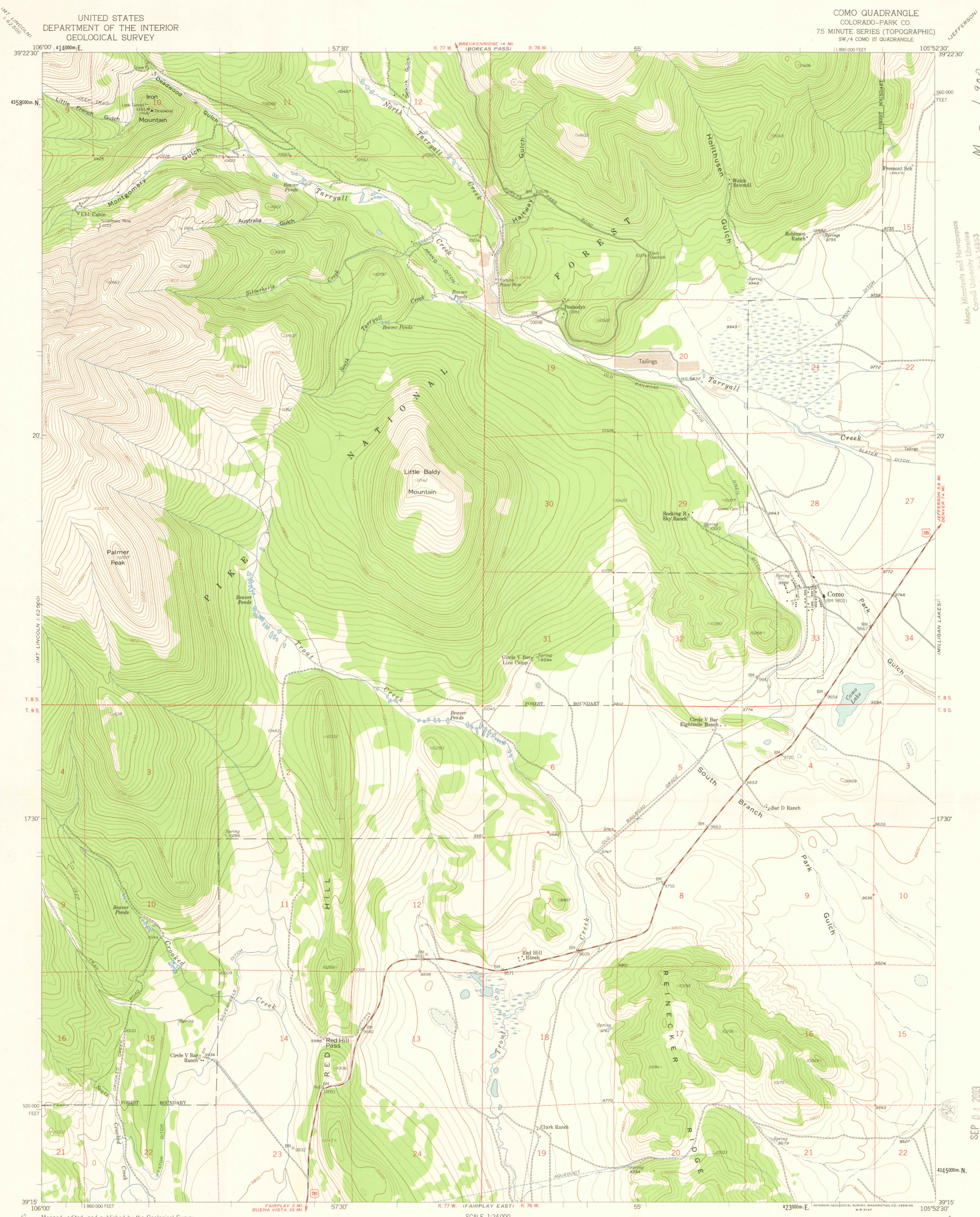
Maps, Microforms and Newspapers
Cornell University Libraries
Ithaca, New York 14853

WATERWAY FROM CTR

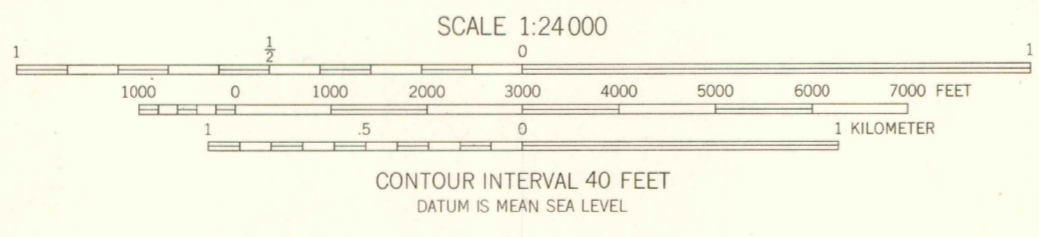
SEP 04 2003

ARTHUR L. BRIDGEMAN
COLORADO SURVEY OF MINES

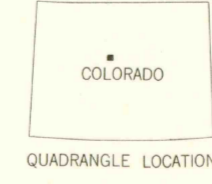
G 3700
s24
.G4
MAP ROOM



Mapped, edited, and published by the Geological Survey as part of the Department of the Interior program for the development of the Missouri River Basin Control by USGS and USC&GS
Topography from aerial photographs by photogrammetric methods
Aerial photographs taken 1953. Field check 1957
Polyconic projection. 1927 North American datum
10,000-foot grid based on Colorado coordinate system, central zone
1000-meter Universal Transverse Mercator grid ticks, zone 13, shown in blue
Dashed land lines indicate approximate locations
Certain land lines omitted in T. 8 S.-R. 76 and 77 W. because of insufficient data
Unchecked elevations are shown in brown



ROAD CLASSIFICATION
Medium-duty ——— Light-duty ———
Unimproved dirt - - - - - U.S. Route



Map L900
5 C 7371

COMO, COLO.
SW 1/4 COMO 15' QUADRANGLE
N3915-W10552.5/7.5
1957

THIS MAP COMPLIES WITH NATIONAL MAP ACCURACY STANDARDS
FOR SALE BY U.S. GEOLOGICAL SURVEY, DENVER 2, COLORADO OR WASHINGTON 25, D. C.
A FOLDER DESCRIBING TOPOGRAPHIC MAPS AND SYMBOLS IS AVAILABLE ON REQUEST

OFFICE COPY