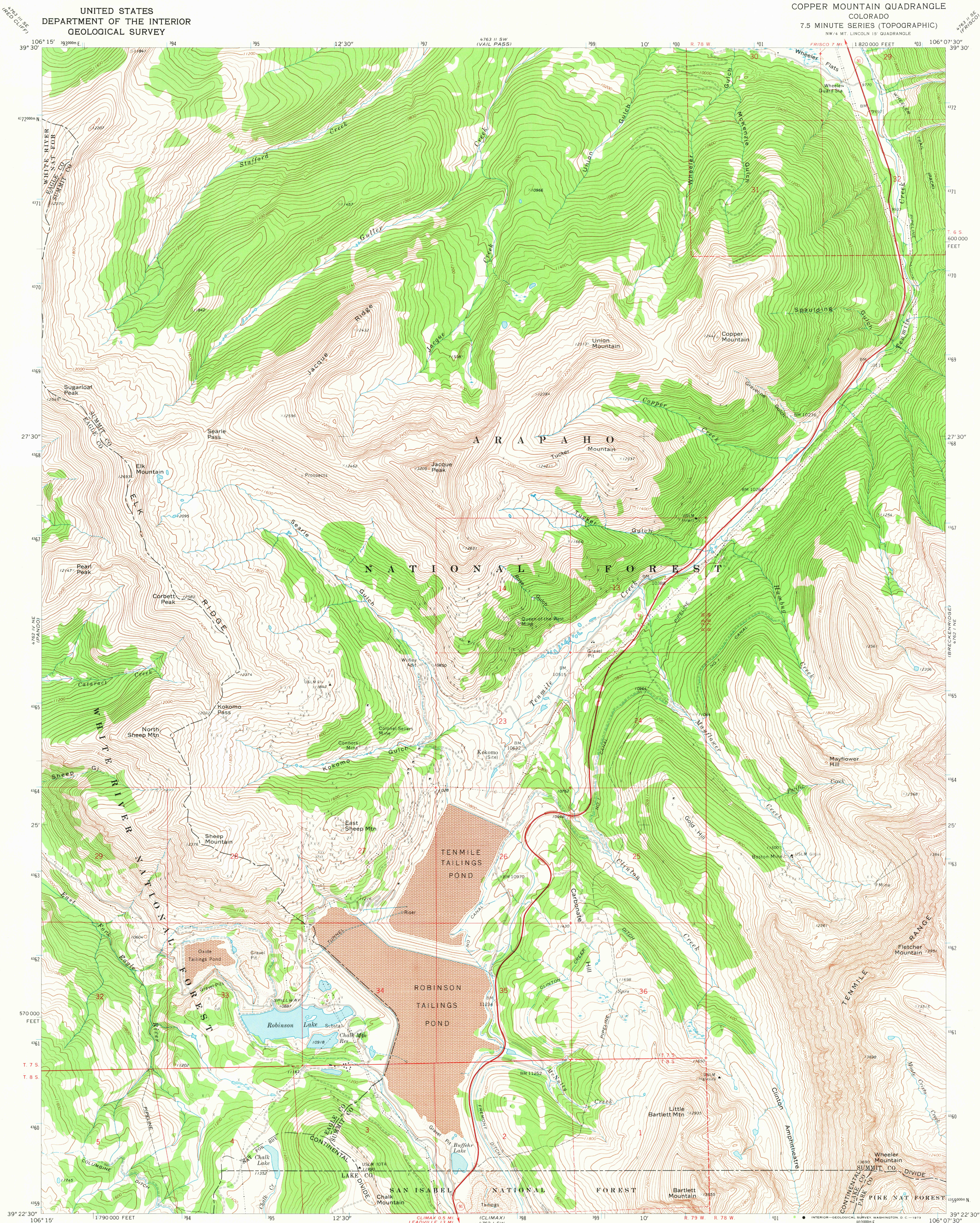


UNITED STATES
DEPARTMENT OF THE INTERIOR
GEOLOGICAL SURVEY

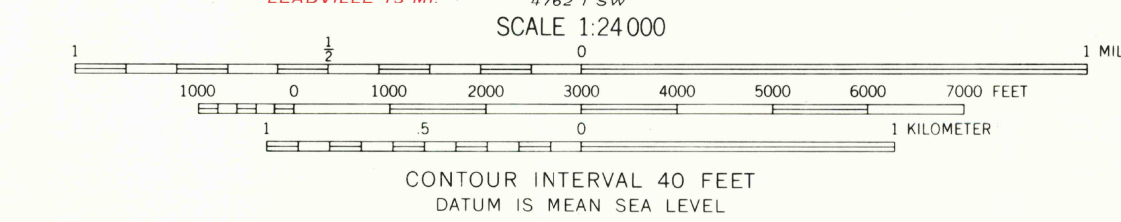
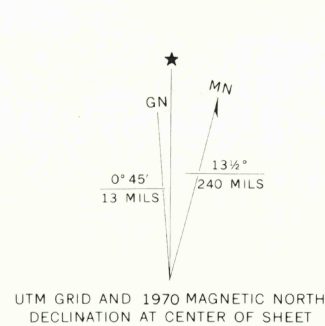
COPPER MOUNTAIN QUADRANGLE
COLORADO
7.5 MINUTE SERIES (TOPOGRAPHIC)

NW 1/4 MT. LINCOLN 15' QUADRANGLE

4762 1 SE
(FRISCO)



Mapped, edited, and published by the Geological Survey
Control by USGS and USCGS
Topography by photogrammetric methods from aerial
photographs taken 1968. Field checked 1970
Polyconic projection. 1927 North American datum
10,000-foot grid based on Colorado coordinate system,
central zone
1000-meter Universal Transverse Mercator grid ticks,
zone 13, shown in blue
Certain land lines are omitted because of insufficient data



ROAD CLASSIFICATION
Primary highway, hard surface
Secondary highway, hard surface
Interstate Route
Light-duty road, hard or improved surface
Unimproved road
U. S. Route
State Route

COPPER MOUNTAIN, COLO.
NW 1/4 MT. LINCOLN 15' QUADRANGLE
N3922.5-W10607.5/7.5

1970

AMS 4762 I NW-SERIES V877

THIS MAP COMPLIES WITH NATIONAL MAP ACCURACY STANDARDS
FOR SALE BY U.S. GEOLOGICAL SURVEY, DENVER, COLORADO 80225, OR WASHINGTON, D.C. 20242
A FOLDER DESCRIBING TOPOGRAPHIC MAPS AND SYMBOLS IS AVAILABLE ON REQUEST

NOV 25 1981

7100