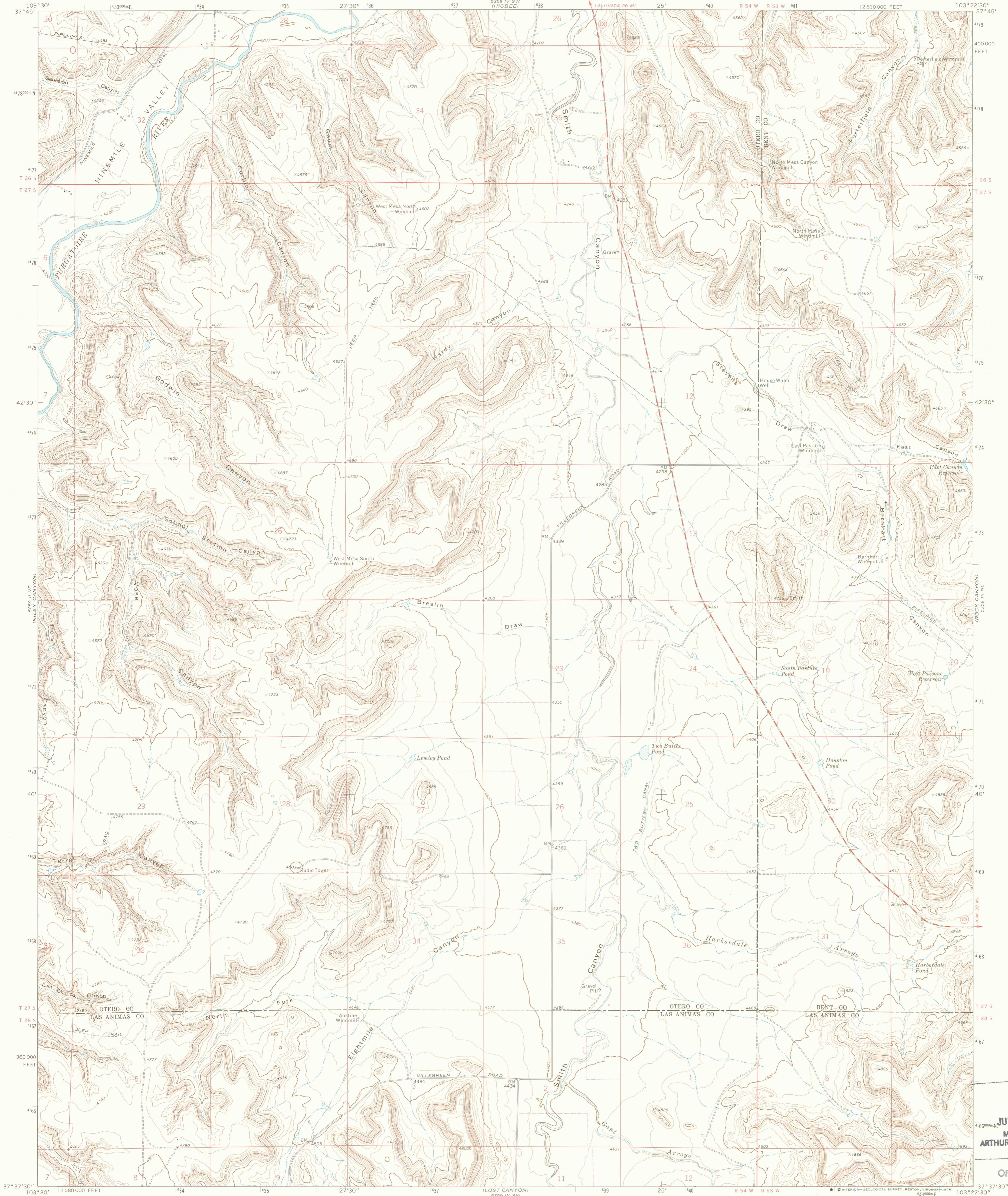
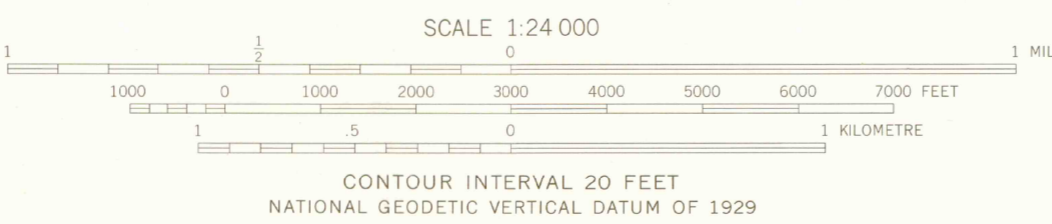
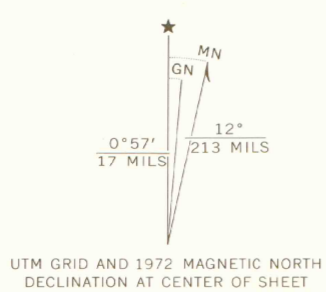


UNITED STATES  
DEPARTMENT OF THE INTERIOR  
GEOLOGICAL SURVEY

CORBIN CANYON QUADRANGLE  
COLORADO  
7.5 MINUTE SERIES (TOPOGRAPHIC)



Mapped, edited, and published by the Geological Survey  
Control by USGS and NOS/NOAA  
Topography by photogrammetric methods from aerial  
photographs taken 1971. Field checked 1972  
Projection and 10,000-foot grid ticks: Colorado  
coordinate system, south zone (Lambert conformal conic)  
1000-metre Universal Transverse Mercator grid ticks  
zone 13, shown in blue. 1927 North American datum  
Fine red dashed lines indicate selected fence lines



**ROAD CLASSIFICATION**  
 Primary highway, hard surface ——— Light duty road, hard or improved surface ———  
 Secondary highway, hard surface ——— Unimproved road ———  
 Interstate Route ——— U. S. Route ——— State Route ———

THIS MAP COMPLIES WITH NATIONAL MAP ACCURACY STANDARDS  
 FOR SALE BY U.S. GEOLOGICAL SURVEY, DENVER, COLORADO 80225, OR RESTON, VIRGINIA 22092  
 A FOLDER DESCRIBING TOPOGRAPHIC MAPS AND SYMBOLS IS AVAILABLE ON REQUEST

CORBIN CANYON, COLO.  
 N3737.5-W10322.5/7.5

1972

AMS 5359 III NW—SERIES V877

JUN 16 1989  
 MAP ROOM  
 ARTHUR LAKES LIBRARY

OFFICE COPY

LIBRARY USE ONLY

G 3701  
 C222 G 3701  
 S24 C222  
 U5 S24  
 U5

