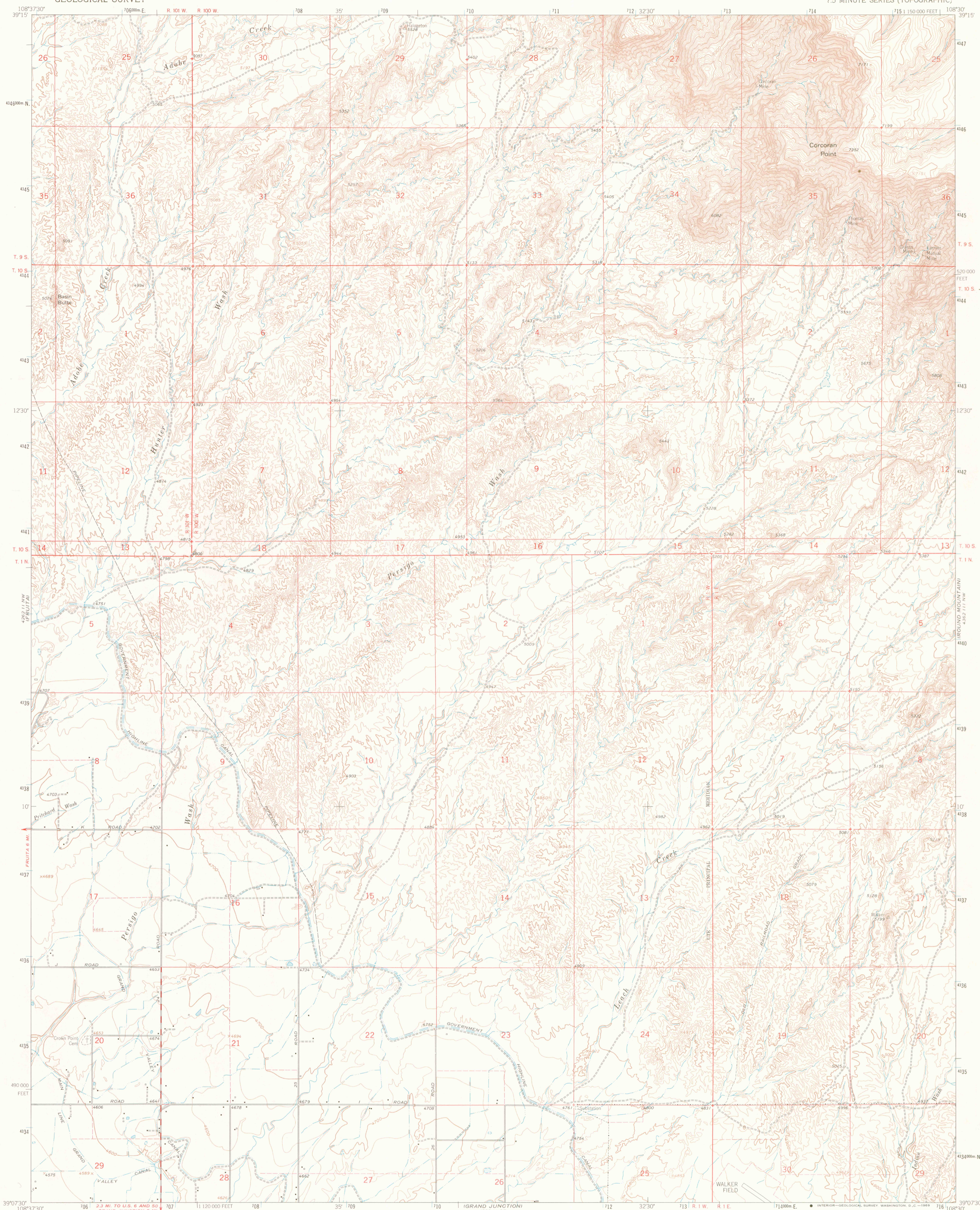
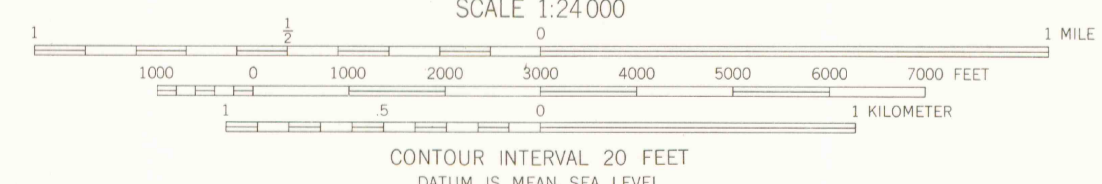
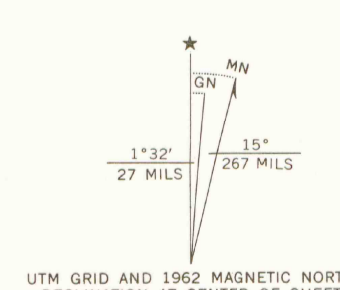


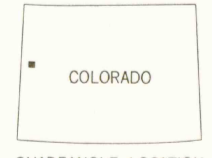
4282 11 NE—SERIES V877  
1:25,000



Mapped, edited, and published by the Geological Survey  
Control by USGS and USC&GS  
Topography by photogrammetric methods from aerial photographs taken 1958. Field checked 1962  
Polyconic projection. 1927 North American datum  
10,000-foot grid based on Colorado coordinate system, central zone  
1000-meter Universal Transverse Mercator grid ticks, zone 12, shown in blue  
Fine red dashed lines indicate selected fence lines



SCALE 1:24,000  
CONTOUR INTERVAL 20 FEET  
DATUM IS MEAN SEA LEVEL



ROAD CLASSIFICATION  
Medium-duty ——— Light-duty ———  
Unimproved dirt - - - - -

CORCORAN POINT, COLO.  
N39075-W10830/7.5  
1962  
AMS 4282 11 NE—SERIES V877

THIS MAP COMPLIES WITH NATIONAL MAP ACCURACY STANDARDS  
FOR SALE BY U. S. GEOLOGICAL SURVEY, DENVER, COLORADO 80225, OR WASHINGTON, D. C. 20242  
A FOLDER DESCRIBING TOPOGRAPHIC MAPS AND SYMBOLS IS AVAILABLE ON REQUEST

NOV 1 2006

ATTENTION: COLLECTOR'S COPY

4282 11 NW  
1:25,000

G 3700  
24  
64  
MAP ROOM

FOR COPY  
LIBRARY USE ONLY

100 COLORADO  
NATIONAL MONUMENT  
4282 11 NW