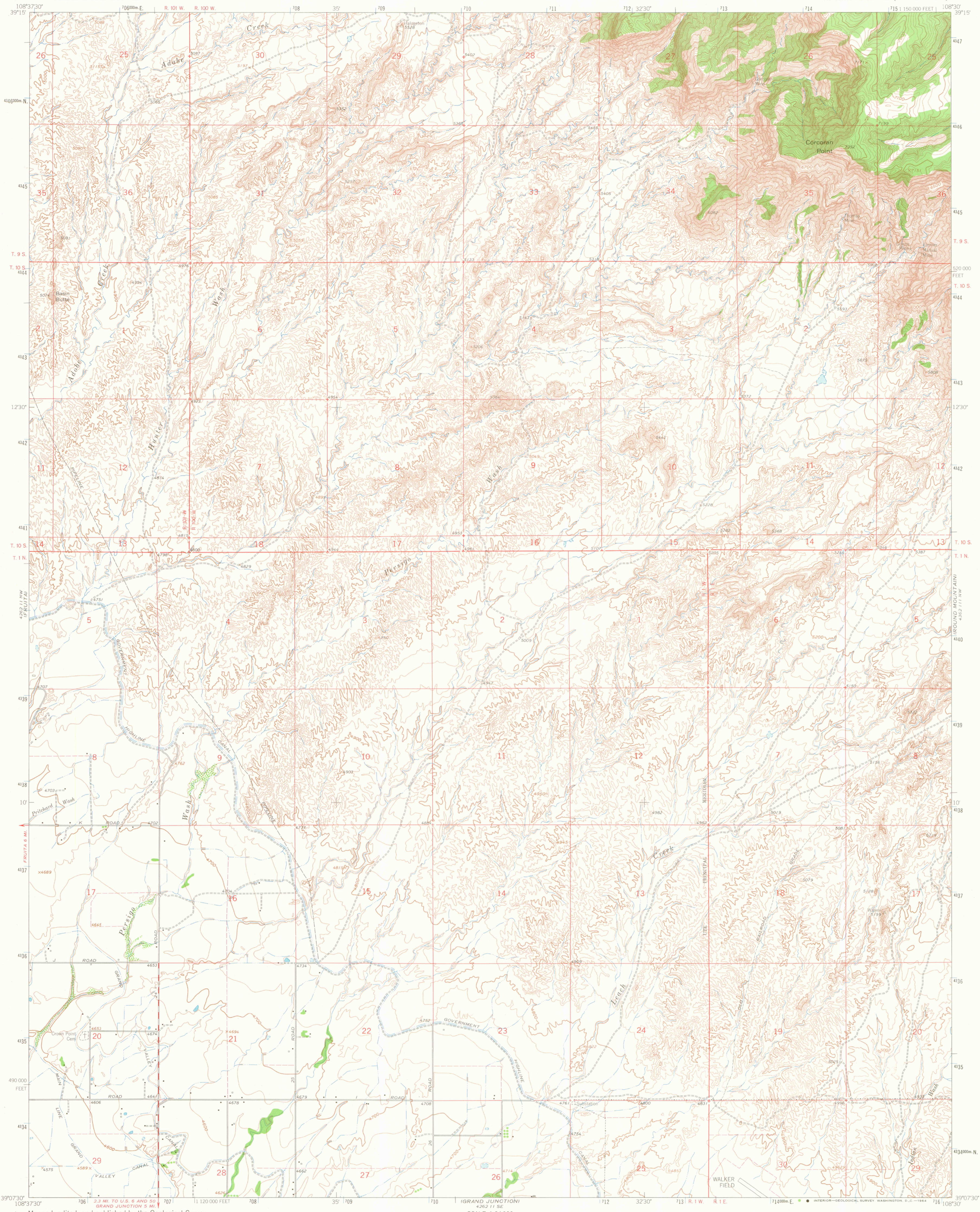
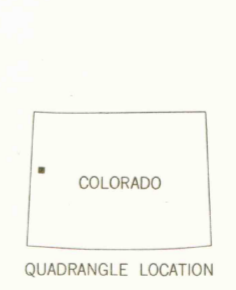
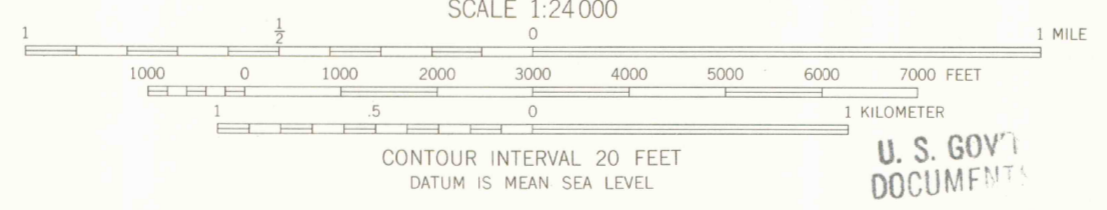
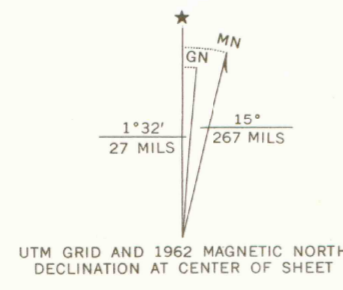


4162 IV
IRON CREEK
1:62,500



Mapped, edited, and published by the Geological Survey

Control by USGS and USC&GS
Topography by photogrammetric methods from aerial photographs taken 1958. Field checked 1962
Polyconic projection. 1927 North American datum, 10,000-foot grid based on Colorado coordinate system, central zone
1000-meter Universal Transverse Mercator grid ticks, zone 12, shown in blue
Fine red dashed lines indicate selected fence lines



ROAD CLASSIFICATION
Medium-duty ——— Light-duty ———
Unimproved dirt - - - - -

U. S. GOV'T
DOCUMENT
AUG 20 '64

THIS MAP COMPLIES WITH NATIONAL MAP ACCURACY STANDARDS
FOR SALE BY U.S. GEOLOGICAL SURVEY, DENVER 25, COLORADO OR WASHINGTON 25, D.C.
A FOLDER DESCRIBING TOPOGRAPHIC MAPS AND SYMBOLS IS AVAILABLE ON REQUEST

CORCORAN POINT, COLO.
N3907 5 - W10830 / 7.5

1962

AMS 4262 11 NE—SERIES V877

COLORADO
NATIONAL MONUMENT
1962 11 9 W

OFFICE COPY

LIBRARY USE ONLY