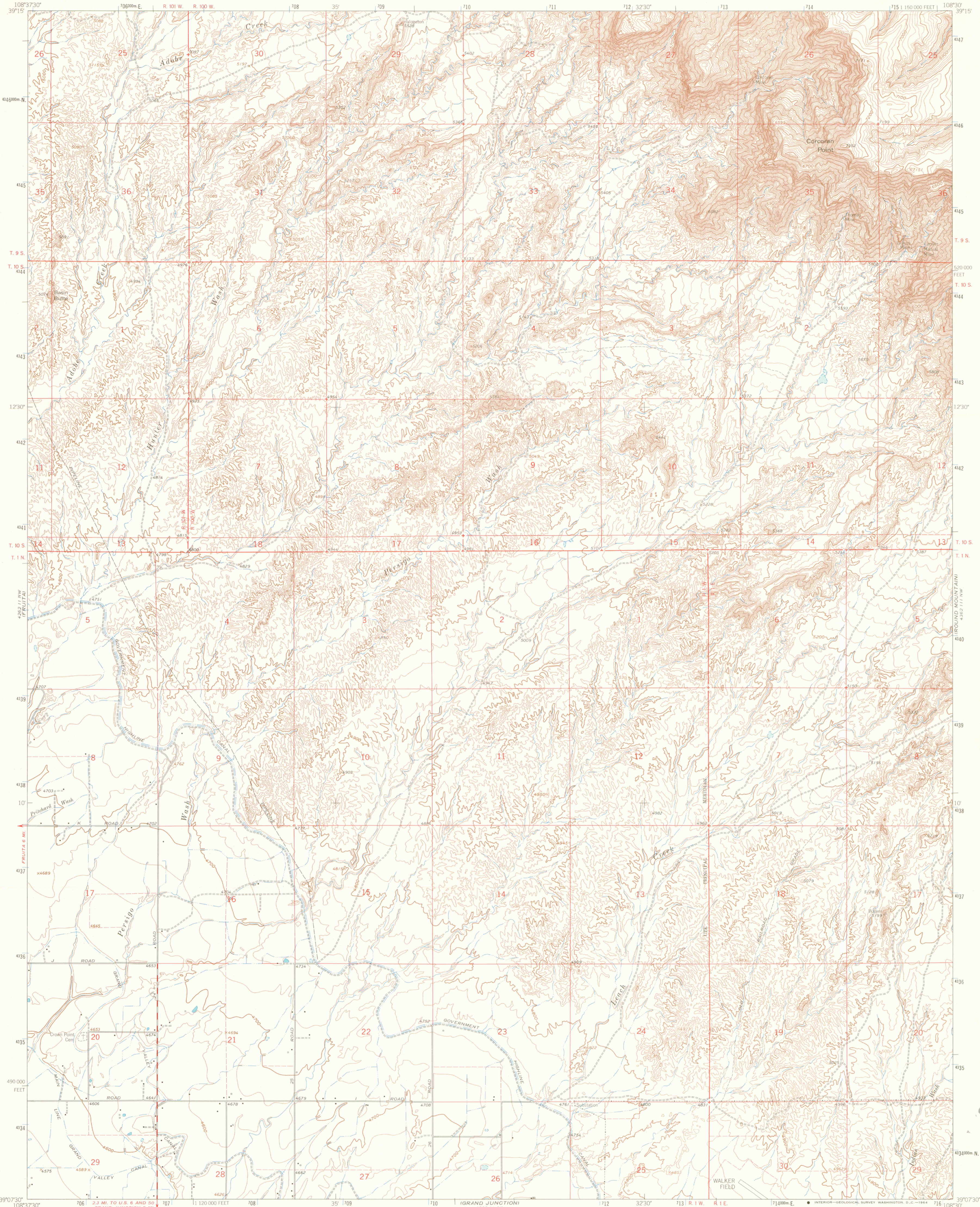


1962
1:25,000
IRON CREEK



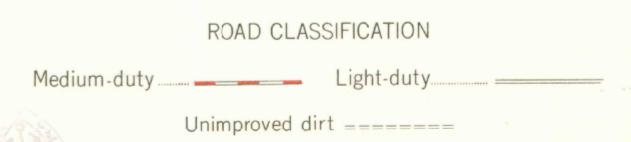
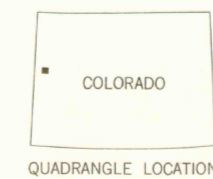
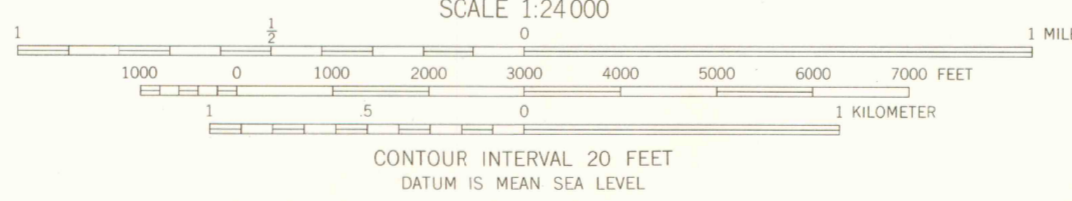
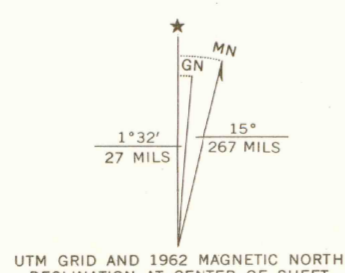
Mapped, edited, and published by the Geological Survey

Control by USGS and USC&GS

Topography by photogrammetric methods from aerial photographs taken 1958. Field checked 1962

Polyconic projection. 1927 North American datum. 10,000-foot grid based on Colorado coordinate system, central zone. 1000-meter Universal Transverse Mercator grid ticks, zone 12, shown in blue.

Fine red dashed lines indicate selected fence lines



JUL 14 1999

ARTHUR LAKES LIBRARY
COLORADO SCHOOL OF MINES

CORCORAN POINT, COLO.
N3907.5 - W10830.7/5

1962

AMS 4282 1:1 NE-SERIES V877

THIS MAP COMPLIES WITH NATIONAL MAP ACCURACY STANDARDS
FOR SALE BY U.S. GEOLOGICAL SURVEY, DENVER 25, COLORADO OR WASHINGTON 25, D.C.
A FOLDER DESCRIBING TOPOGRAPHIC MAPS AND SYMBOLS IS AVAILABLE ON REQUEST

COLORADO
NATIONAL MONUMENT

OFFICE

G 3701
C222
s24
U5