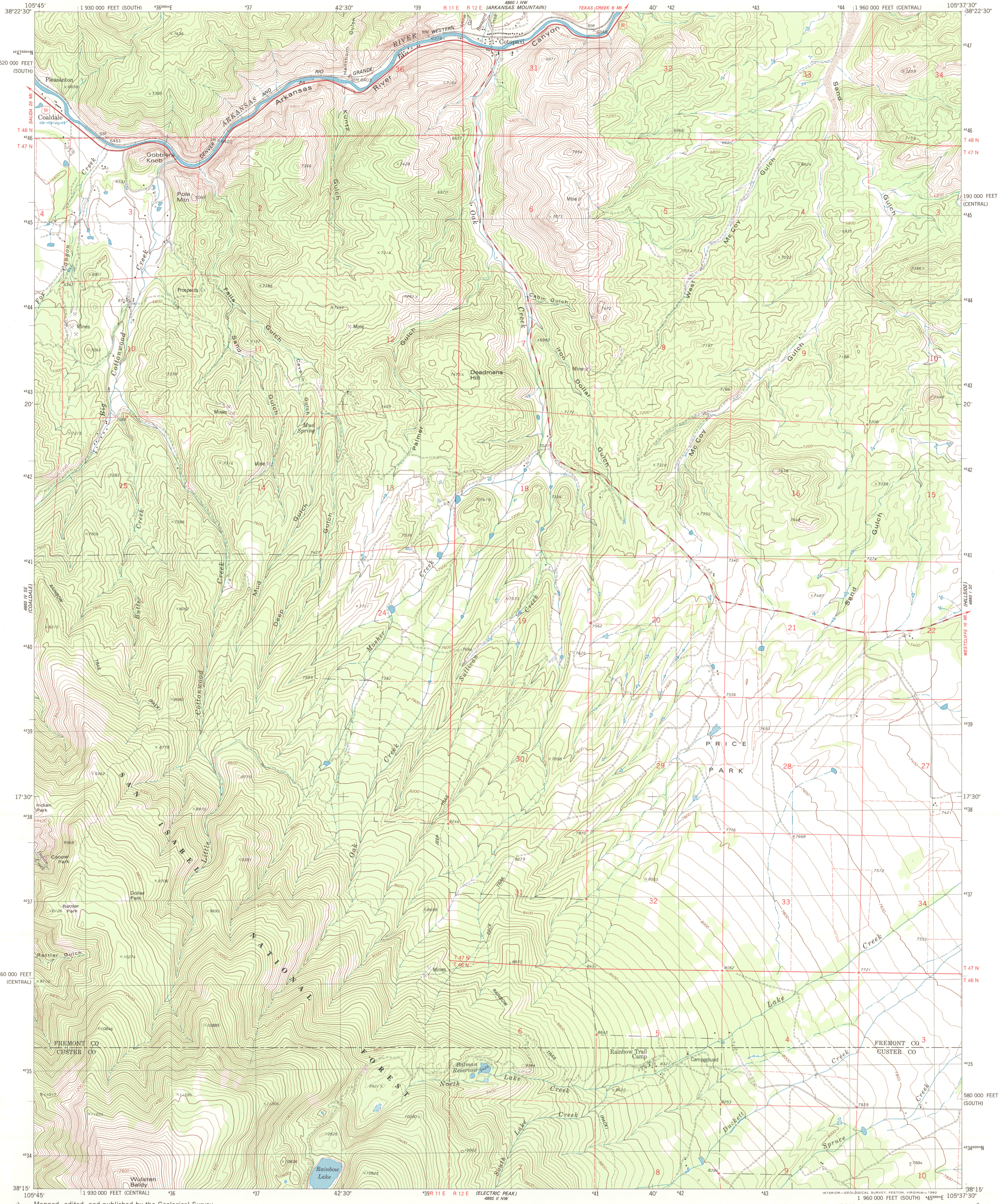
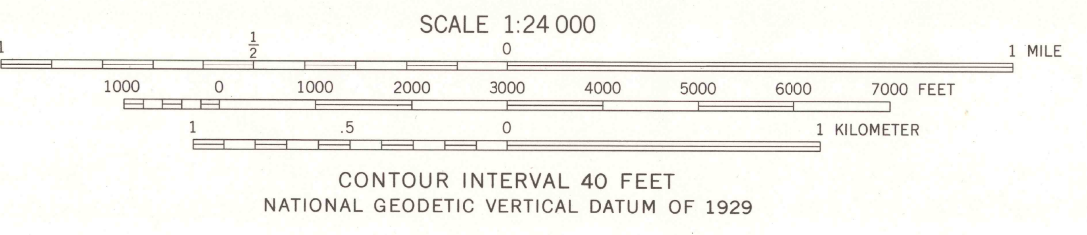
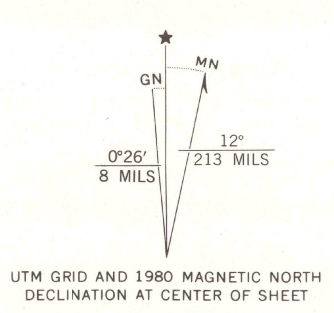


UNITED STATES
DEPARTMENT OF THE INTERIOR
GEOLOGICAL SURVEY

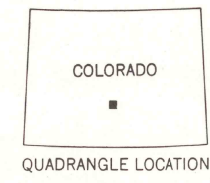
COTOPAXI QUADRANGLE
COLORADO
7.5 MINUTE SERIES (TOPOGRAPHIC)
SW/4 COTOPAXI 15' QUADRANGLE



Mapped, edited, and published by the Geological Survey
Control by USGS and NOS/NOAA
Topography by photogrammetric methods from aerial photographs taken 1975. Field checked 1976. Map edited 1980
Projection: Colorado coordinate system, central zone (Lambert conformal conic)
10,000-foot grid ticks based on Colorado coordinate system, central and south zones
1000-meter Universal Transverse Mercator grid, zone 13
1927 North American datum
To place on the predicted North American Datum 1983 move the projection lines 3 meters north and 50 meters east as shown by dashed corner ticks
Fine red dashed lines indicate selected fence lines
Certain land lines are omitted because of insufficient data
There may be private inholdings within the boundaries of the National or State reservations shown on this map

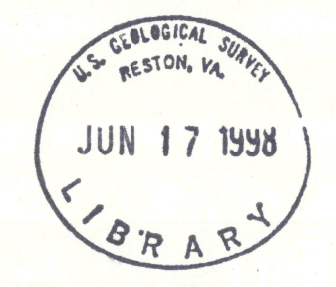


SCALE 1:24 000
CONTOUR INTERVAL 40 FEET
NATIONAL GEODETIC VERTICAL DATUM OF 1929



ROAD CLASSIFICATION

Primary highway, hard surface	Light-duty road, hard or improved surface
Secondary highway, hard surface	Unimproved road
Interstate Route	U. S. Route
	State Route



COTOPAXI, COLO.
SW/4 COTOPAXI 15' QUADRANGLE
N3815-W10537.5/7.5

1980
DMA 4860 I SW-SERIES V877

THIS MAP COMPLIES WITH NATIONAL MAP ACCURACY STANDARDS
FOR SALE BY U.S. GEOLOGICAL SURVEY, P.O. BOX 25286, DENVER, COLORADO 80225
A FOLDER DESCRIBING TOPOGRAPHIC MAPS AND SYMBOLS IS AVAILABLE ON REQUEST

