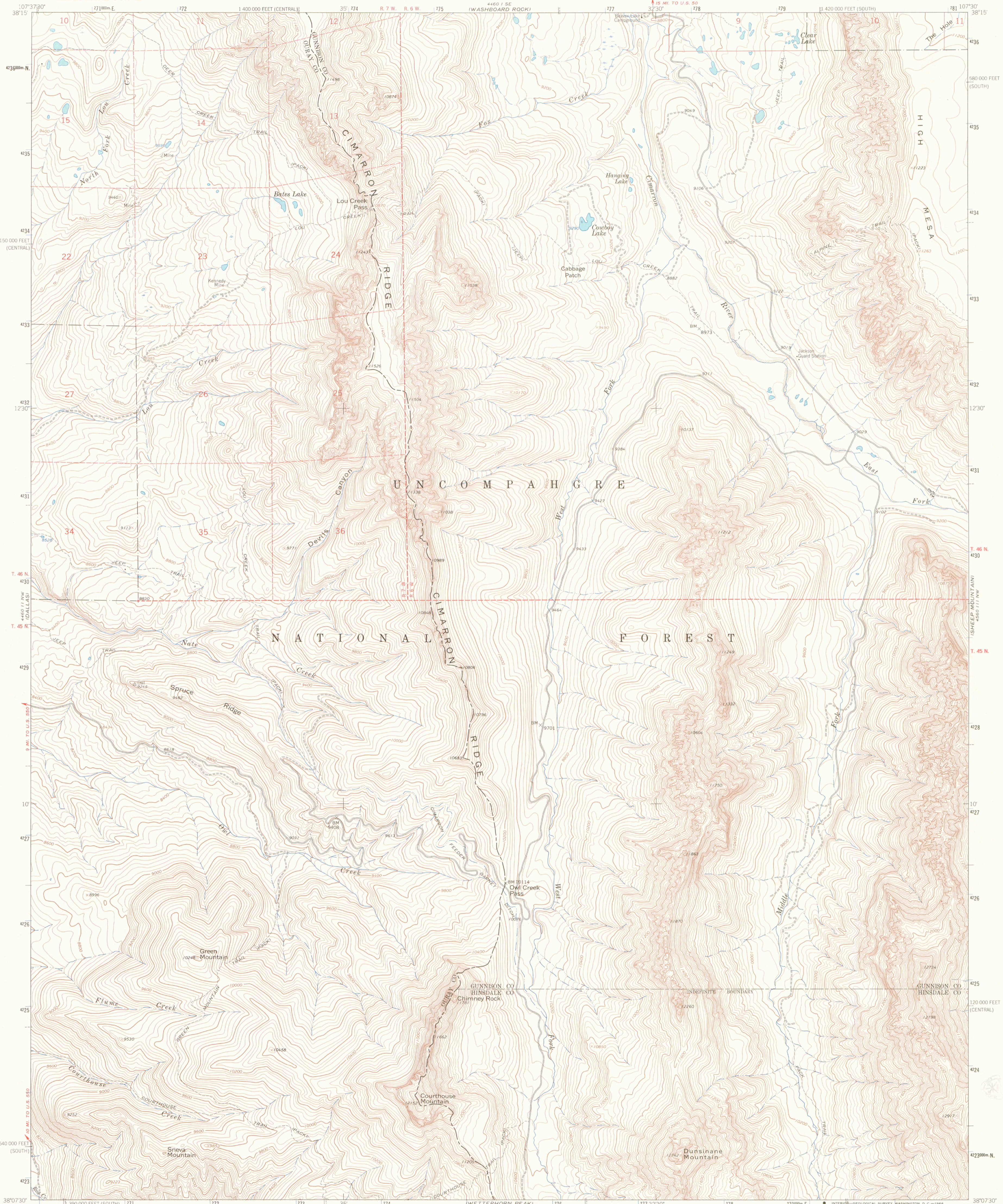
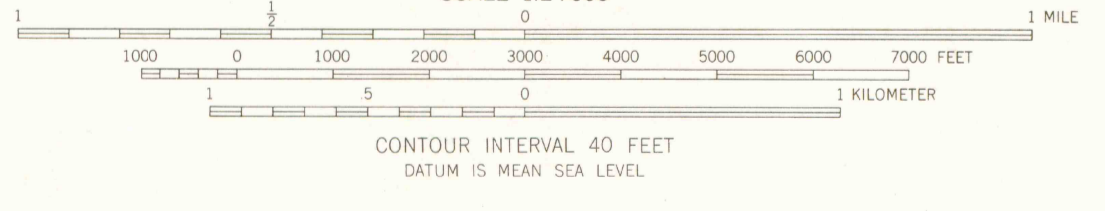
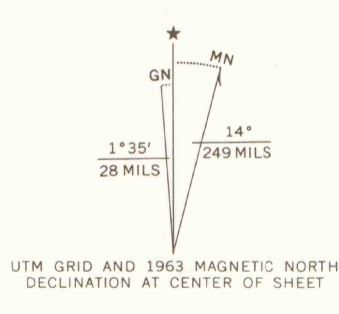


UNITED STATES
DEPARTMENT OF THE INTERIOR
GEOLOGICAL SURVEY

COURTHOUSE MOUNTAIN QUADRANGLE
COLORADO
7.5 MINUTE SERIES (TOPOGRAPHIC)
NE/4 OURAY 15' QUADRANGLE



Mapped, edited, and published by the Geological Survey
Control by USGS and USC&GS
Topography by photogrammetric methods from aerial
photographs taken 1962. Field checked 1963
Polyconic projection. 1927 North American datum
10,000-foot grids based on Colorado coordinate system, south and
central zones
1000-meter Universal Transverse Mercator grid ticks,
zone 13, shown in blue
Where omitted, land lines have not been established or are
not shown because of insufficient data



ROAD CLASSIFICATION
Light-duty ————— Unimproved dirt - - - - -

TOP 0 CO 24000 DEPOSITORY MAP

COURTHOUSE MOUNTAIN, COLO.
NE/4 OURAY 15' QUADRANGLE
1963
AMS 4460 11 NE-SERIES 7877

SEP 29 1994
COLLECTION
U.S. GEOLOGICAL SURVEY
LAFAMIE, WY 82071-3006

LIBRARY USE ONLY

THIS MAP COMPLIES WITH NATIONAL MAP ACCURACY STANDARDS
FOR SALE BY U.S. GEOLOGICAL SURVEY, DENVER, COLORADO 80225, OR WASHINGTON, D. C. 20242
A FOLDER DESCRIBING TOPOGRAPHIC MAPS AND SYMBOLS IS AVAILABLE ON REQUEST

APR 27 2004

G 3700
s24
.G4
MAP ROOM

UNCOMPAHGRE PEAK