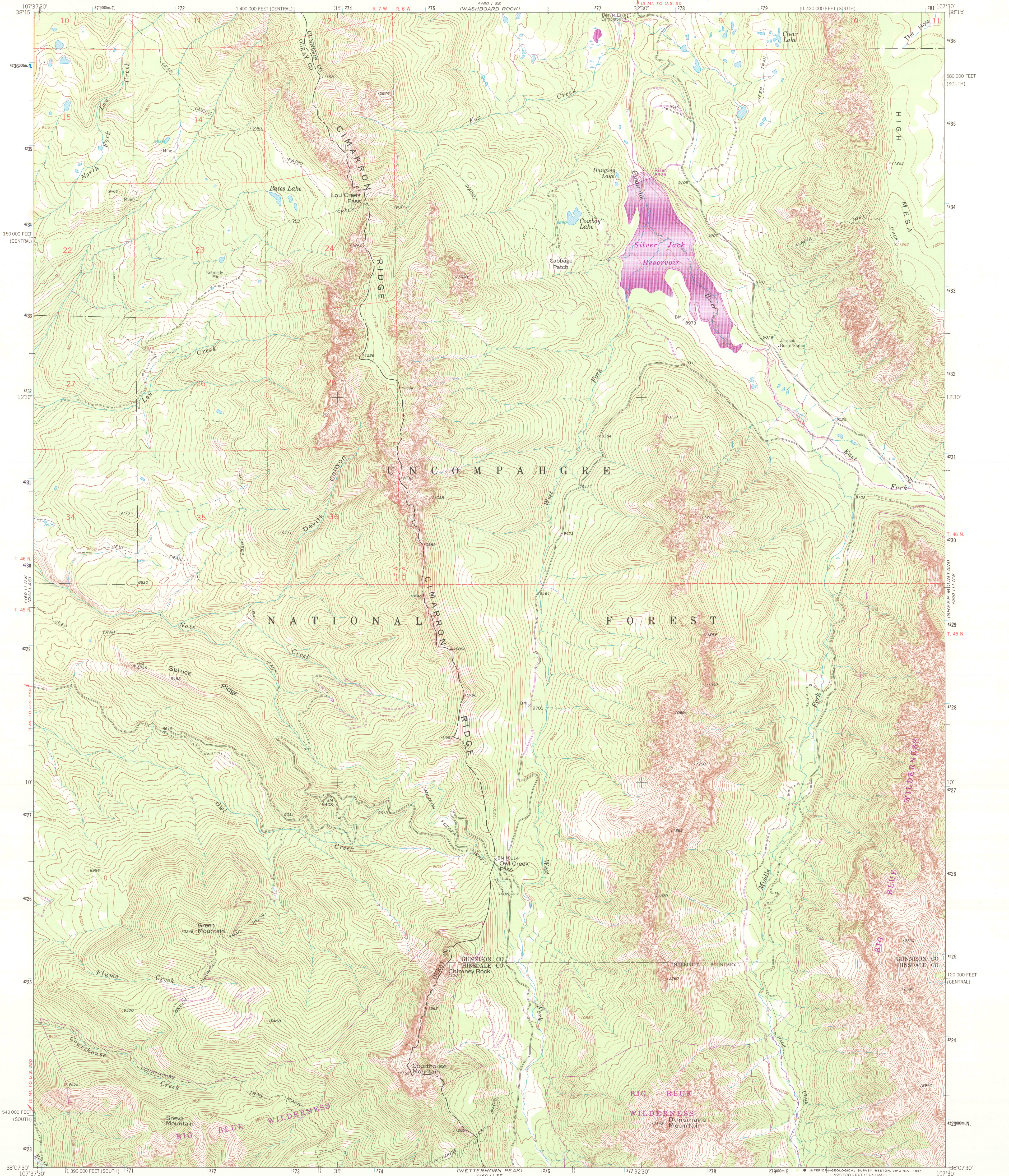


UNITED STATES  
DEPARTMENT OF THE INTERIOR  
GEOLOGICAL SURVEY

COURTHOUSE MOUNTAIN QUADRANGLE  
COLORADO  
7.5 MINUTE SERIES (TOPOGRAPHIC)



Mapped, edited, and published by the Geological Survey

Control by USGS and NOS/NOAA

Topography by photogrammetric methods from aerial  
photographs taken 1962. Field checked 1963

Polyconic projection. 1927 North American Datum

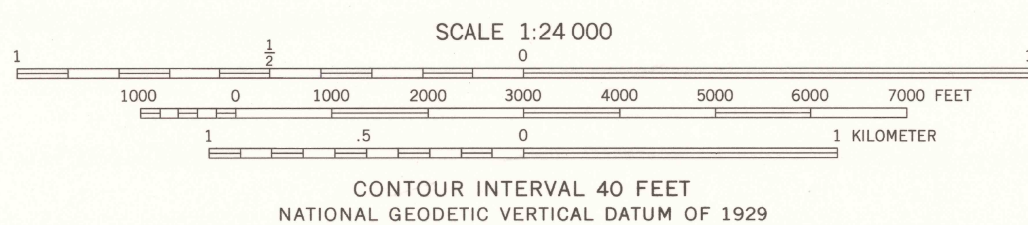
10,000-foot grids based on Colorado coordinate system, south and  
central zones

1000-meter Universal Transverse Mercator grid ticks,  
zone 13, shown in blue

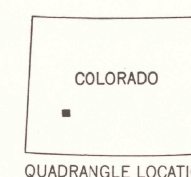
Where omitted, land lines have not been established or are  
not shown because of insufficient data

To place on the predicted North American Datum 1983  
move the projection lines 4 meters north and  
55 meters east as shown by dashed corner ticks

There may be private inholdings within the boundaries  
of the National or State reservations shown on this map



THIS MAP COMPLIES WITH NATIONAL MAP ACCURACY STANDARDS  
FOR SALE BY U. S. GEOLOGICAL SURVEY, DENVER, COLORADO 80225, OR RESTON, VIRGINIA 22092  
A FOLDER DESCRIBING TOPOGRAPHIC MAPS AND SYMBOLS IS AVAILABLE ON REQUEST



ROAD CLASSIFICATION  
Light-duty ..... Unimproved dirt =====

COURTHOUSE MOUNTAIN, COLO.  
38107-B5-TF-024

1963  
PHOTOREVISED 1983  
DMA 4460 11 NE-SERIES V877