

4881' E  
THIRTYONE MILE  
MOUNTAIN



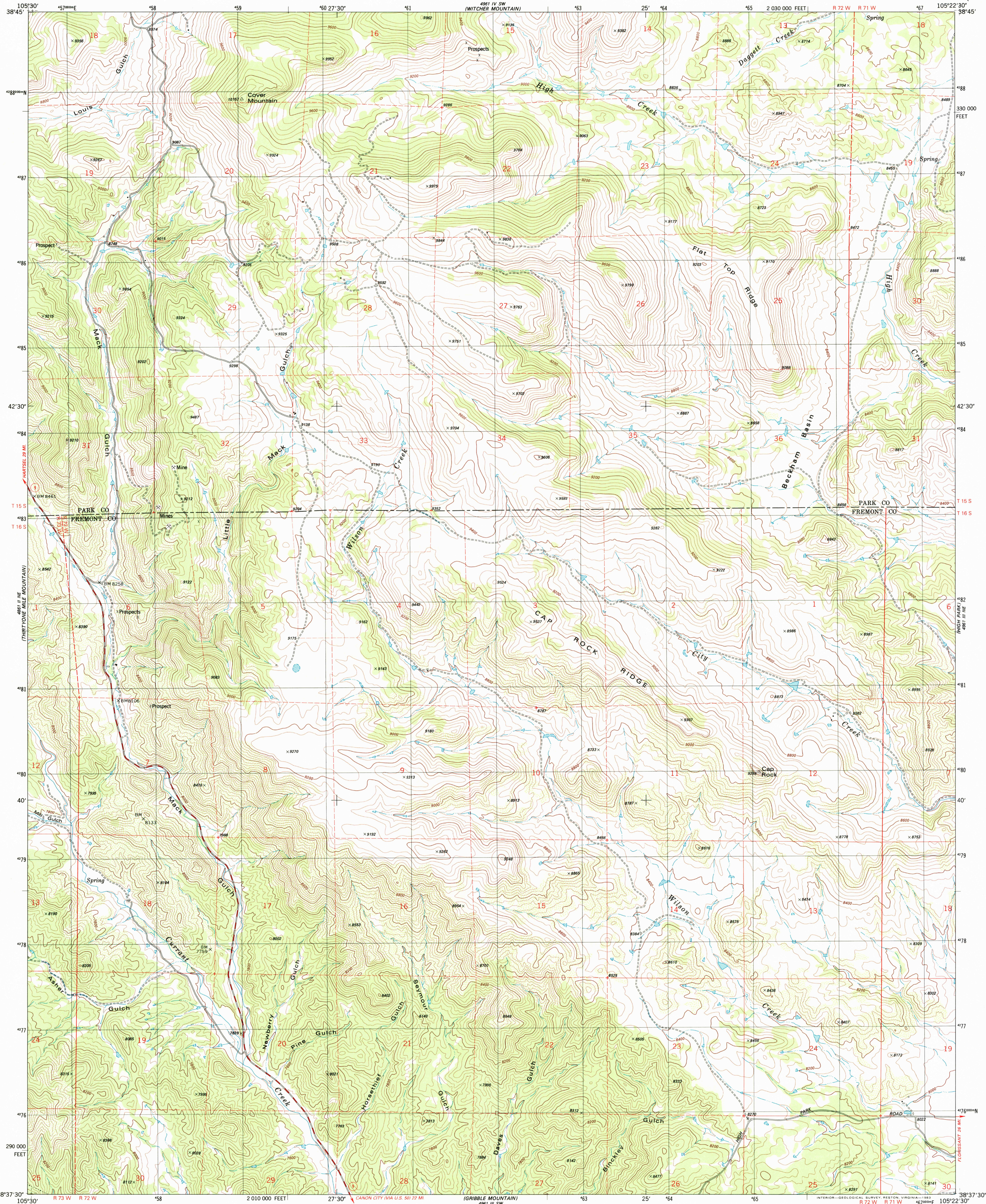
U.S. DEPARTMENT OF THE INTERIOR  
U.S. GEOLOGICAL SURVEY

COVER MOUNTAIN QUADRANGLE  
COLORADO

7.5 MINUTE SERIES (TOPOGRAPHIC)

NW/4 COVER MTN. 15' QUADRANGLE

4881' E  
THIRTYONE MILE  
MOUNTAIN



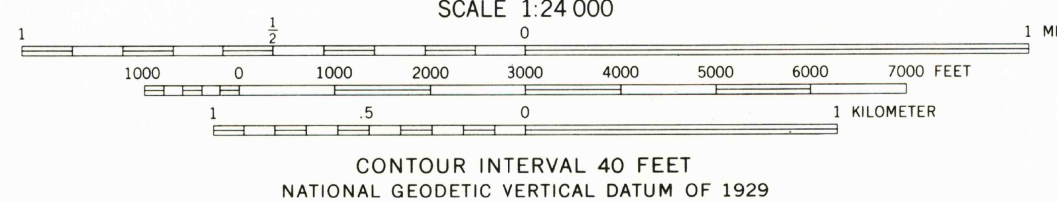
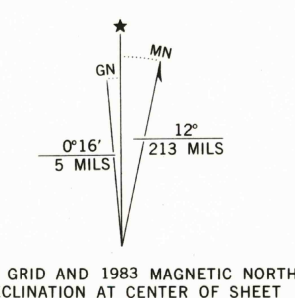
Mapped, edited, and published by the Geological Survey

Control by USGS and NOS/NOAA

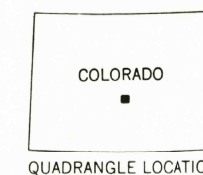
Topography by photogrammetric methods from aerial photographs  
taken 1975. Field checked 1976. Map edited 1983

Projection and 10,000-foot grid ticks: Colorado  
coordinate system, central zone (Lambert conformal conic)  
1000-meter Universal Transverse Mercator grid, zone 13  
1927 North American datum

To place on the predicted North American Datum 1983  
move the projection lines 4 meters north and  
49 meters east as shown by dashed corner ticks  
Fine red dashed lines indicate selected fence lines



CONTOUR INTERVAL 40 FEET  
NATIONAL GEODETIC VERTICAL DATUM OF 1929



ROAD CLASSIFICATION	
Primary highway, hard surface	Light-duty road, hard or improved surface
Secondary highway, hard surface	Unimproved road
Interstate Route	U. S. Route
	State Route

RECEIVED  
JUL 3 1 2002

COVER MOUNTAIN, COLO.  
NW/4 COVER MTN. 15' QUADRANGLE  
N3837.5-W10522.5/7.5

USGS  
HISTORICAL MAP ARCHIVES

1983

DMA 4961 III NW-SERIES V877

THIS MAP COMPLIES WITH NATIONAL MAP ACCURACY STANDARDS  
FOR SALE BY U.S. GEOLOGICAL SURVEY, P.O. BOX 25286, DENVER, COLORADO 80225  
A FOLDER DESCRIBING TOPOGRAPHIC MAPS AND SYMBOLS IS AVAILABLE ON REQUEST

