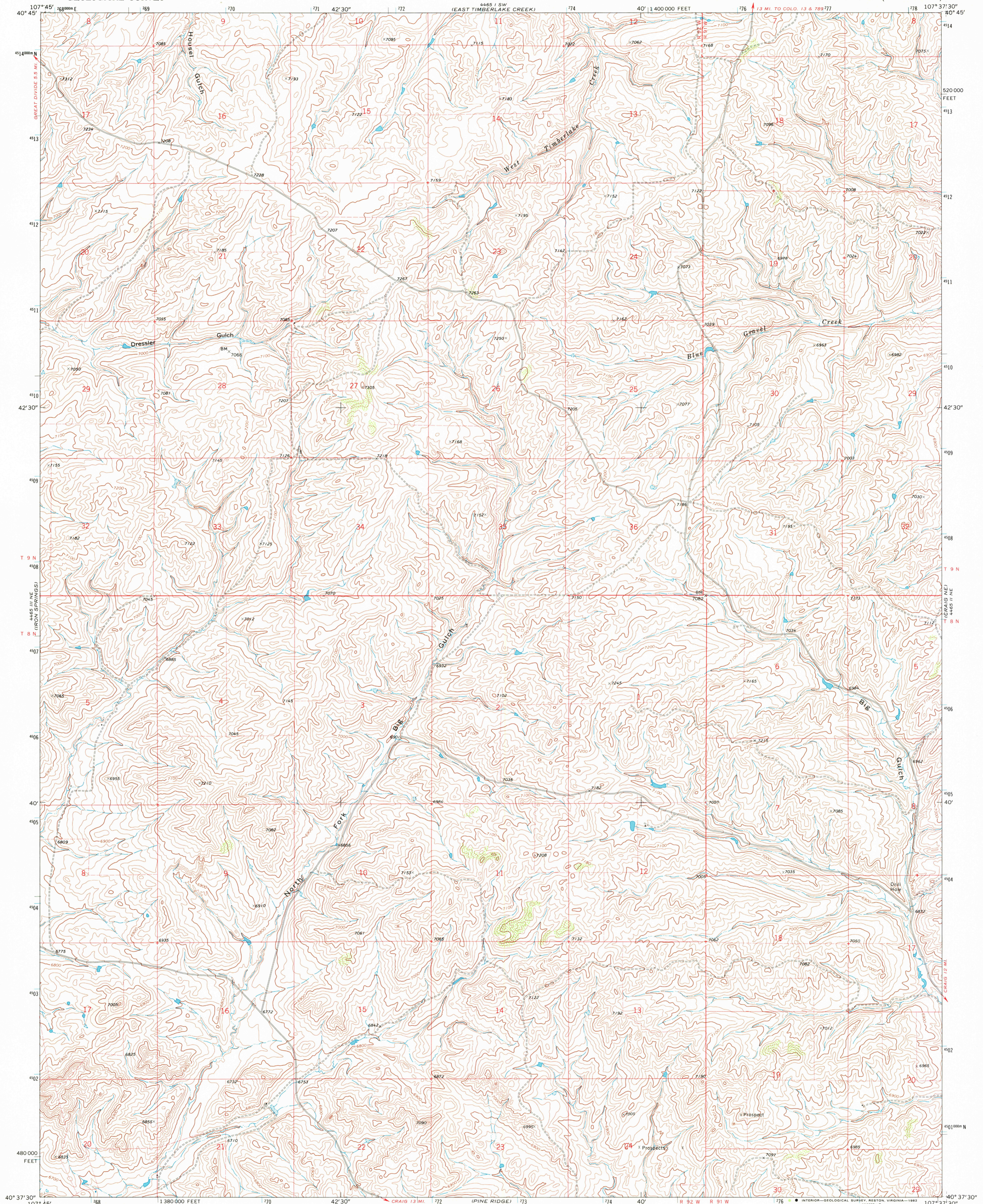


UNITED STATES
DEPARTMENT OF THE INTERIOR
GEOLOGICAL SURVEY

CRAIG NW QUADRANGLE
COLORADO—MOFFAT CO.
7.5 MINUTE SERIES (TOPOGRAPHIC)



Mapped, edited, and published by the Geological Survey

Control by USGS and USC&GS

Topography by photogrammetric methods from aerial photographs taken 1968. Field checked 1969

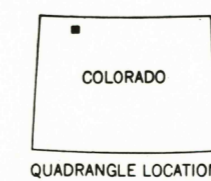
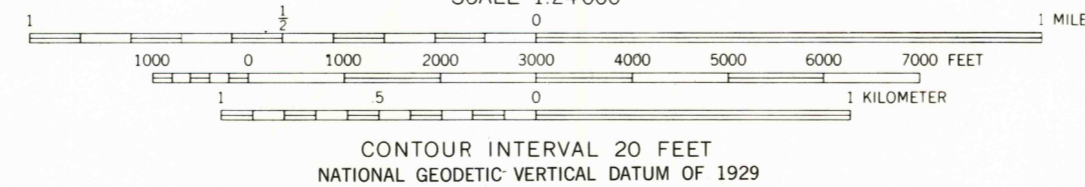
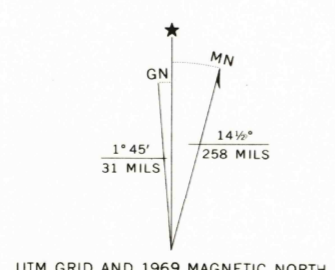
Polyconic projection. 1927 North American datum

10,000-foot grid based on Colorado coordinate system, north zone

1000-meter Universal Transverse Mercator grid ticks, zone 13, shown in blue

Fine red dashed lines indicate selected fence lines

To place on the predicted North American Datum 1983 move the projection lines 7 meters north and 53 meters east as shown by dashed corner ticks



ROAD CLASSIFICATION
Light-duty road, all weather, Unimproved road, fair or dry improved surface weather

THIS MAP COMPLIES WITH NATIONAL MAP ACCURACY STANDARDS FOR SALE BY U. S. GEOLOGICAL SURVEY, DENVER, COLORADO 80225, OR RESTON, VIRGINIA 22092 A FOLDER DESCRIBING TOPOGRAPHIC MAPS AND SYMBOLS IS AVAILABLE ON REQUEST

Map photoinspected 1972
No major culture or drainage changes observed

CRAIG NW, COLO.
N4037.5—W10737.5/7.5

1969
PHOTOINSPECTED 1972
DMA 4465 II NW—SERIES V877

JUL 20 1982

1600