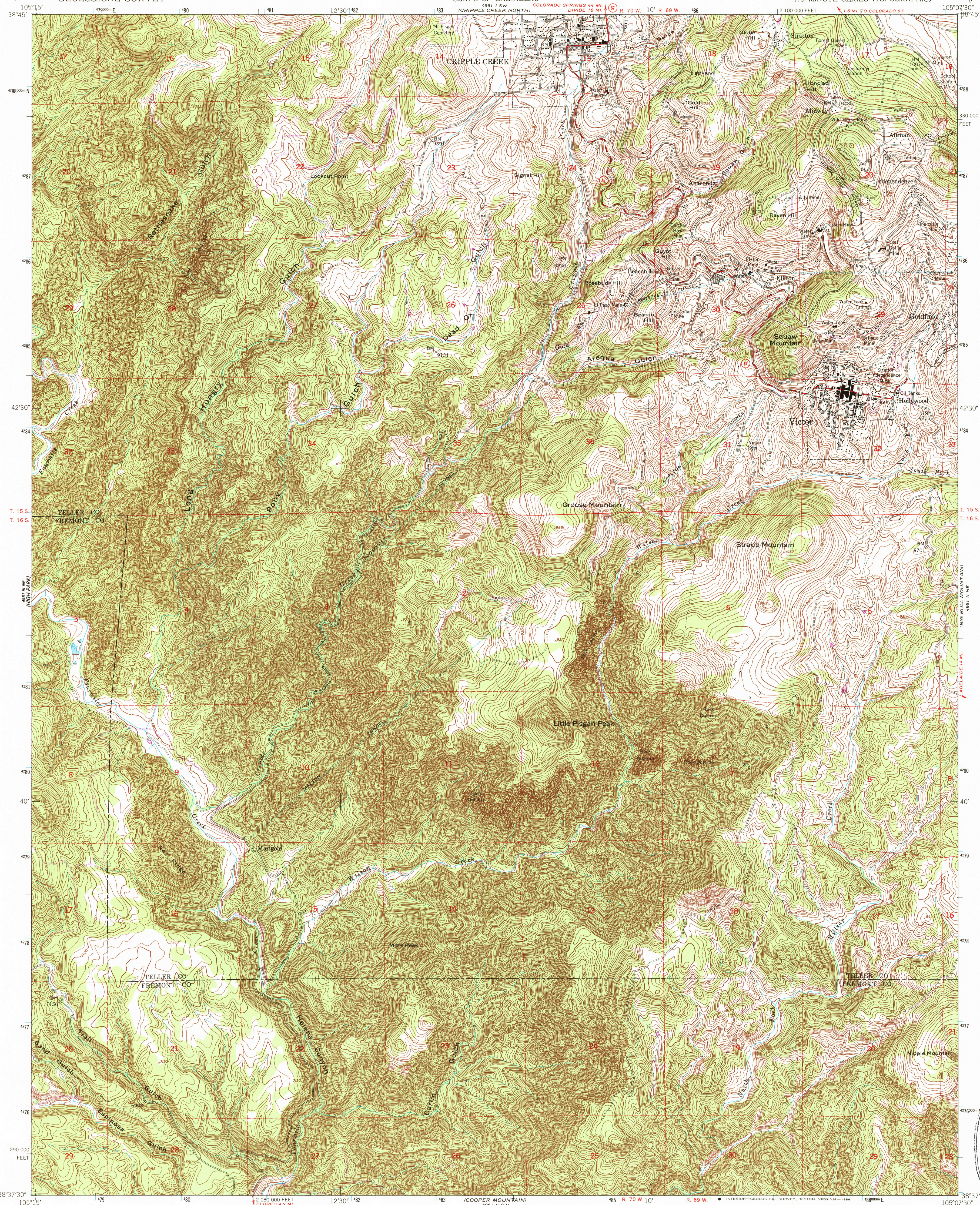


UNITED STATES  
DEPARTMENT OF THE INTERIOR  
GEOLOGICAL SURVEY

UNITED STATES  
DEPARTMENT OF THE ARMY  
CORPS OF ENGINEERS

CRIPPLE CREEK SOUTH QUADRANGLE  
COLORADO  
7.5 MINUTE SERIES (TOPOGRAPHIC)



Mapped by the Army Map Service  
Published for civil use by the Geological Survey

Control by USGS, NOS/NOAA, and USCE

Topography from aerial photographs by multiplex methods  
Aerial photographs taken 1950. Field check 1951

Polyconic projection. 1927 North American Datum  
10,000-foot grid based on Colorado coordinate system,  
central zone

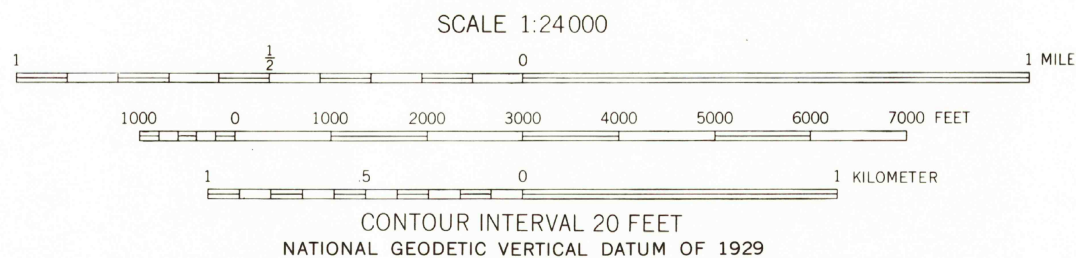
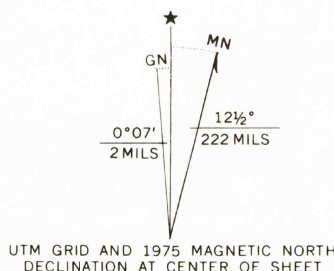
Dashed land lines indicate approximate locations

Unchecked elevations are shown in brown

Locations of all boundaries are approximate

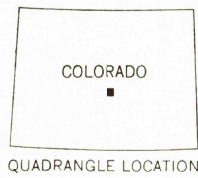
1000-meter Universal Transverse Mercator grid ticks,  
zone 13, shown in blue

Revisions shown in purple compiled by the Geological  
Survey from aerial photographs taken 1975. This  
information not field checked.



THIS MAP COMPLIES WITH NATIONAL MAP ACCURACY STANDARDS  
FOR SALE BY U.S. GEOLOGICAL SURVEY, DENVER, COLORADO 80225, OR RESTON, VIRGINIA 22092  
A FOLDER DESCRIBING TOPOGRAPHIC MAPS AND SYMBOLS IS AVAILABLE ON REQUEST

To place on the predicted North American Datum 1983  
move the projection lines 4 meters north and  
48 meters east as shown by dashed corner ticks



ROAD CLASSIFICATION	
Heavy-duty	Light-duty
Medium-duty	Unimproved dirt
	State Route

CRIPPLE CREEK SOUTH, COLO.  
38105-F2-TF-024

1951  
PHOTOREVISED 1975  
DMA 4961 II NW-SERIES V877

USGS NMD HISTORICAL MAP  
MAR 14 1986  
REC'D FILE COPY