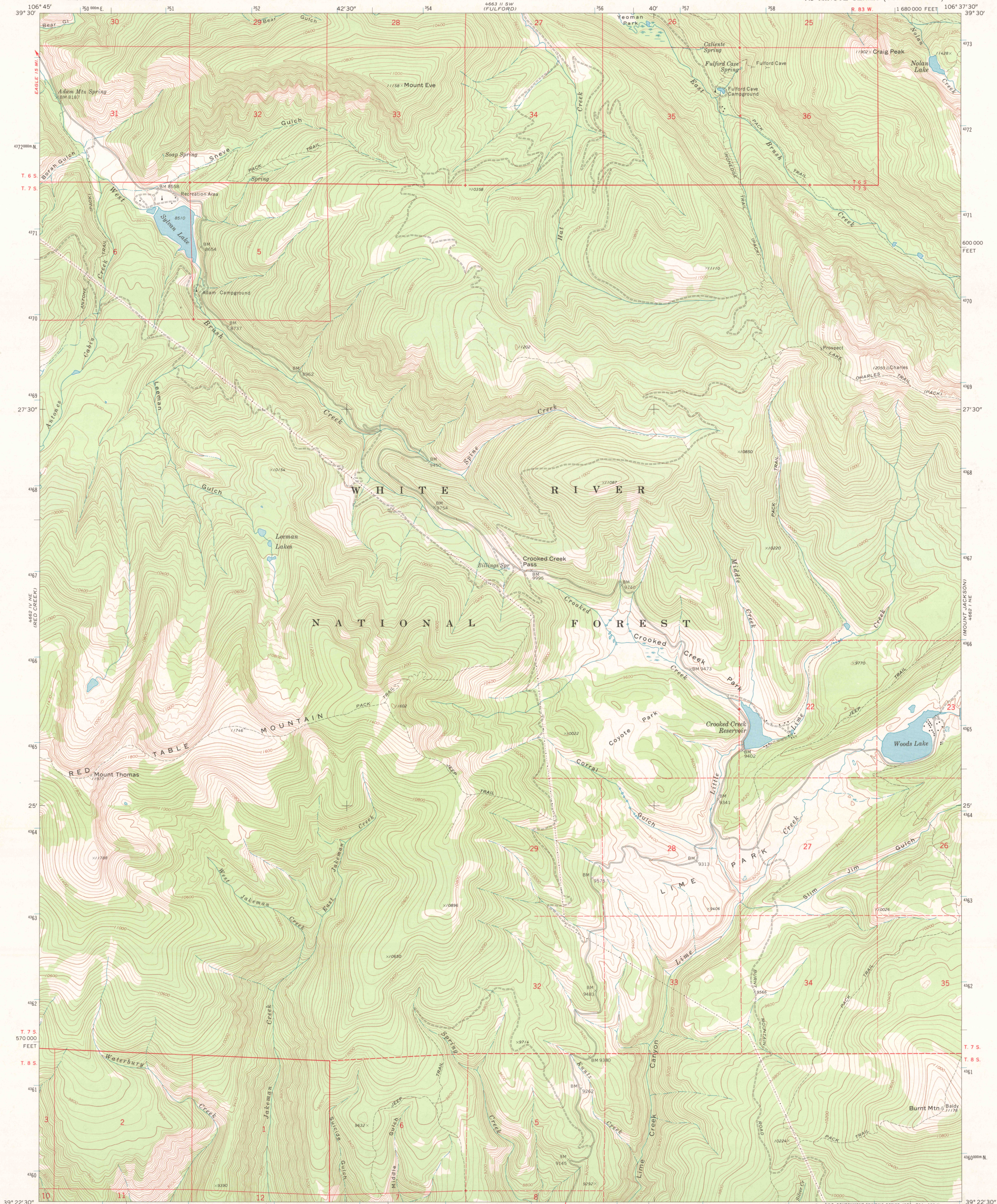
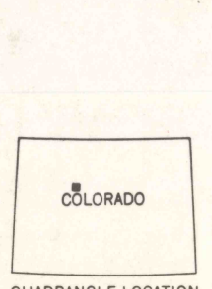
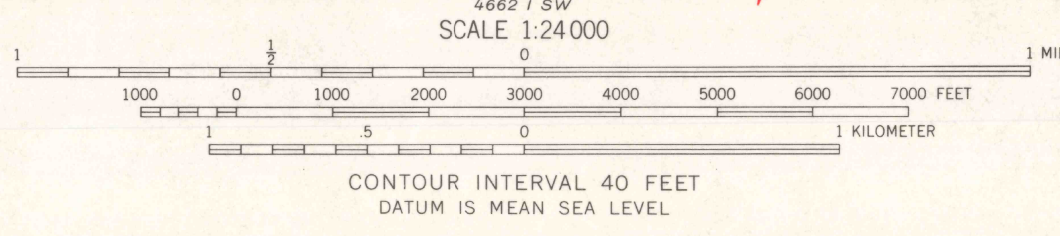
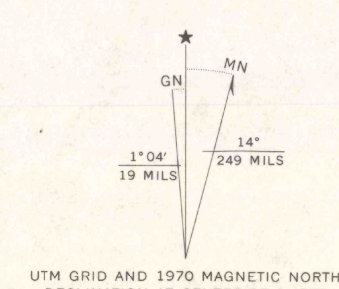


UNITED STATES
DEPARTMENT OF THE INTERIOR
GEOLOGICAL SURVEY

CROOKED CREEK PASS QUADRANGLE
COLORADO—EAGLE CO.
7.5 MINUTE SERIES (TOPOGRAPHIC)



Mapped, edited, and published by the Geological Survey
Control by USGS, USC&GS, and U.S. Bureau of Reclamation
Topography by photogrammetric methods from aerial photographs taken 1968. Field checked 1970
Polyconic projection. 1927 North American datum
10,000-foot grid based on Colorado coordinate system, central zone
1000-meter Universal Transverse Mercator grid ticks, zone 13, shown in blue
Certain land lines are omitted because of insufficient data



ROAD CLASSIFICATION
Primary highway, hard surface ——— Light-duty road, hard or improved surface ———
Secondary highway, hard surface ——— Unimproved road ———
○ Interstate Route □ U.S. Route ○ State Route

THIS MAP COMPLIES WITH NATIONAL MAP ACCURACY STANDARDS
FOR SALE BY U.S. GEOLOGICAL SURVEY, DENVER, COLORADO 80225, OR WASHINGTON, D. C. 20242
A FOLDER DESCRIBING TOPOGRAPHIC MAPS AND SYMBOLS IS AVAILABLE ON REQUEST

USGS
Historical File
Topographic Division

CROOKED CREEK PASS, COLO.
N3922.5—W10637.5/7.5

1970

AMS 4662 1 NW—SERIES V877

JUN 1 1973
Ding 3000