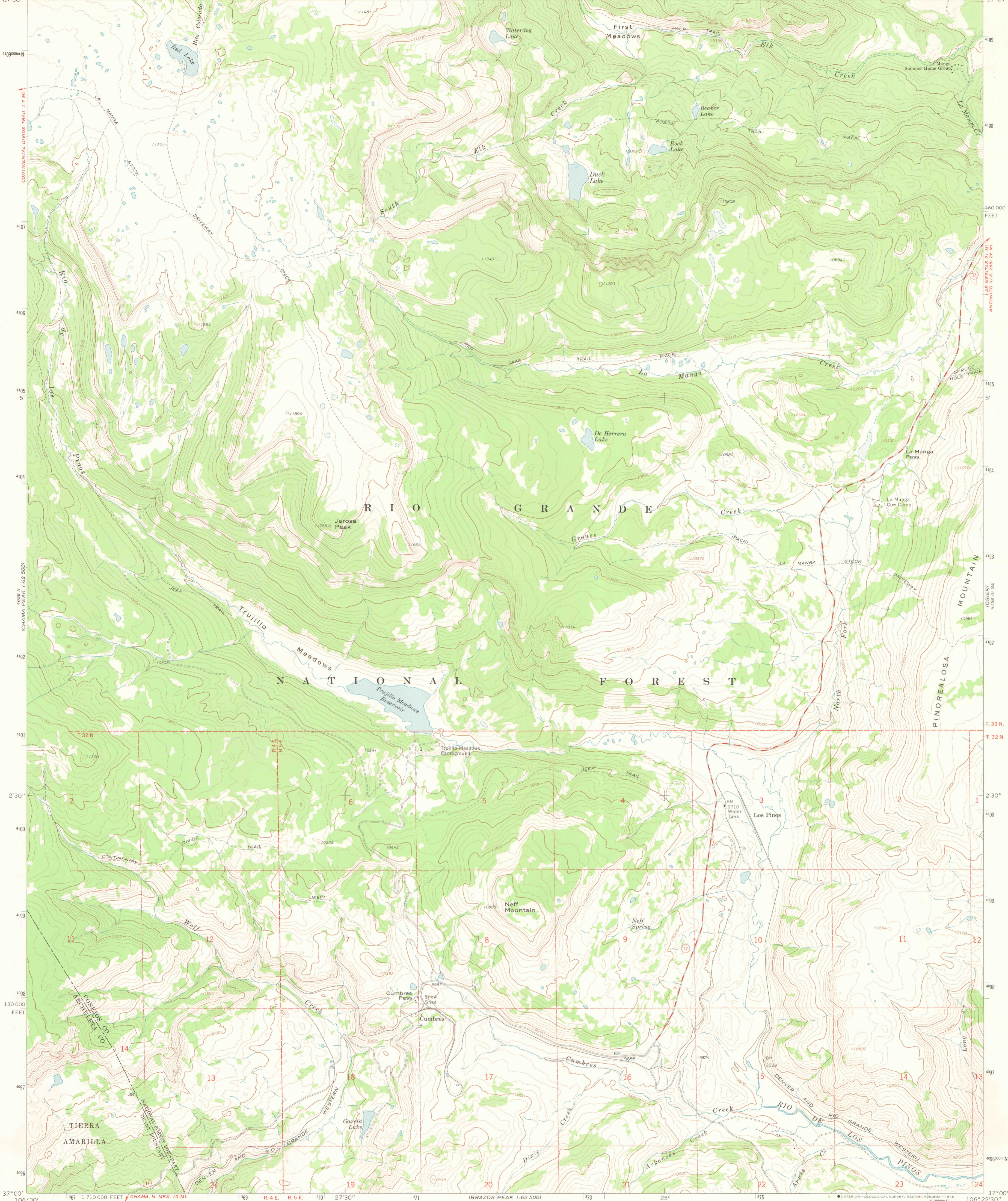
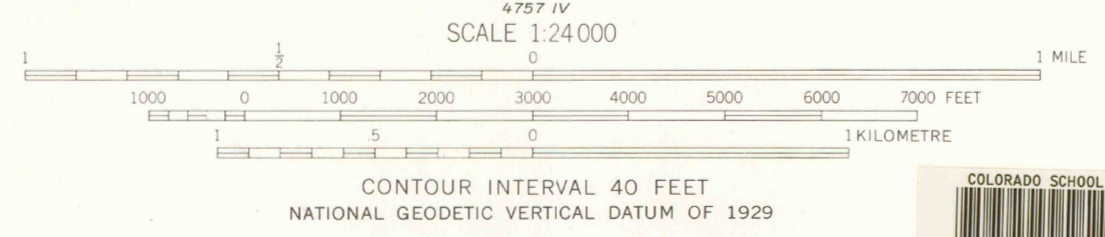
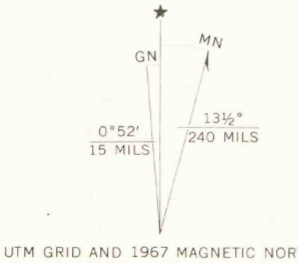


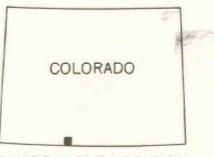
106°30' 167°00' E 168 169 170 27°30' 171 172 25' 173 174 25' 175 176 174000 FEET 177 106°22'30" 37°07'30" 37°07'30"



Mapped by the U. S. Forest Service  
Edited and published by the Geological Survey  
Control by USGS, USC&GS, and U. S. Forest Service  
Topography by photogrammetric methods from aerial  
photographs taken 1960. Field checked by USGS 1967  
Polyconic projection. 1927 North American datum  
10,000-foot grid based on Colorado coordinate system,  
south zone  
1000-metre Universal Transverse Mercator grid ticks,  
zone 13, shown in blue  
Where omitted, land lines have not been established  
or are not shown because of insufficient data



ROAD CLASSIFICATION  
Medium-duty ——— Light-duty ———  
Unimproved dirt - - - - -  
State Route ○



JUL 14 1999

CUMBRES, COLO. 3700  
N3700-W10622.5/7.5  
1967

THIS MAP COMPLIES WITH NATIONAL MAP ACCURACY STANDARDS  
FOR SALE BY U. S. GEOLOGICAL SURVEY, DENVER, COLORADO 80225, OR RESTON, VIRGINIA 22092  
A FOLDER DESCRIBING TOPOGRAPHIC MAPS AND SYMBOLS IS AVAILABLE ON REQUEST

OFFICE COPY  
LIBRARY USE ONLY

AMS 4758 III SW—SERIES V877

3401  
3422  
34  
US

MAP ROOM