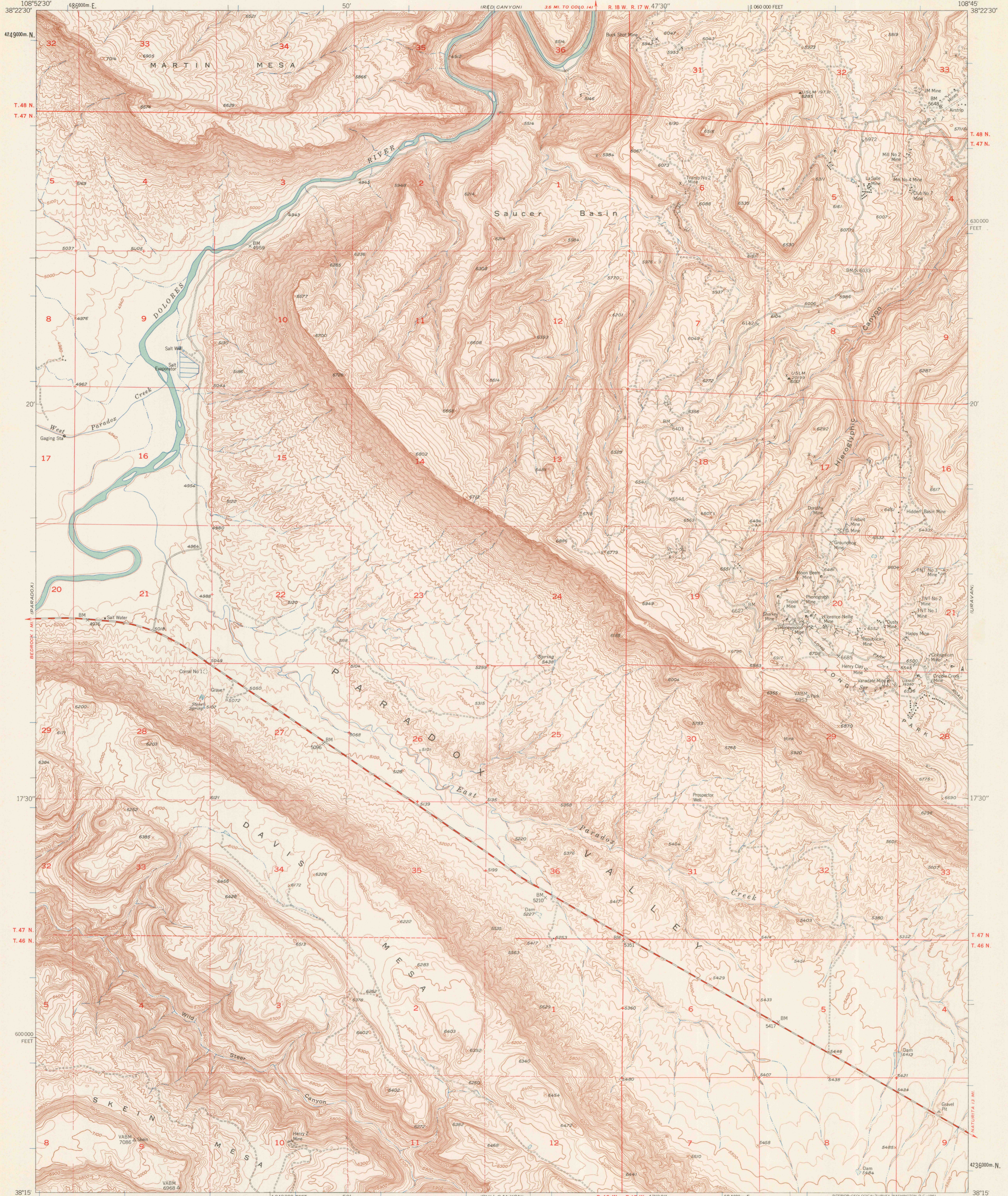


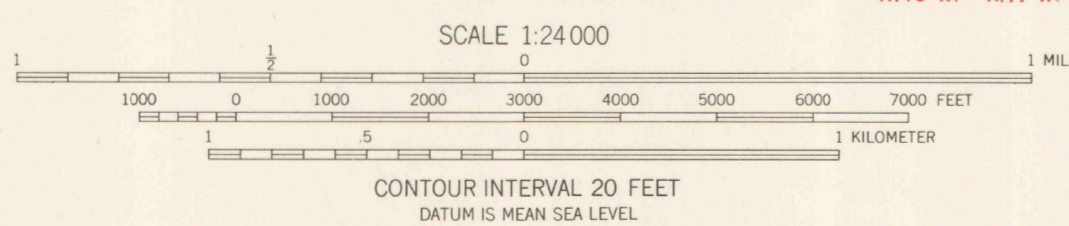
UNITED STATES
DEPARTMENT OF THE INTERIOR
GEOLOGICAL SURVEY

DAVIS MESA QUADRANGLE
COLORADO-MONTROSE CO.
7.5 MINUTE SERIES (TOPOGRAPHIC)
SE/4 PARADOX 15 QUADRANGLE

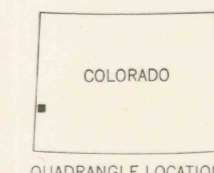


Mapped, edited, and published by the Geological Survey
Control by USGS and USC&GS
Topography from aerial photographs by photogrammetric methods
Aerial photographs taken 1947. Field check 1948. Revised 1960
Polyconic projection. 1927 North American datum
10,000-foot grid based on Colorado coordinate system,
south zone
1000-meter Universal Transverse Mercator grid ticks,
zone 12, shown in blue
Dashed land lines indicate approximate locations
Land lines omitted in T. 46 N.-R. 18 W. and
T. 47 N.-R. 18 W. because of insufficient data

TRUE NORTH
MAGNETIC NORTH
APPROXIMATE MEAN
DECLINATION, 1960



THIS MAP COMPLIES WITH NATIONAL MAP ACCURACY STANDARDS
FOR SALE BY U.S. GEOLOGICAL SURVEY, DENVER 25, COLORADO OR WASHINGTON 25, D.C.
A FOLDER DESCRIBING TOPOGRAPHIC MAPS AND SYMBOLS IS AVAILABLE ON REQUEST



ROAD CLASSIFICATION
Mediocre duty ——— Light-duty ———
Unimproved dirt - - - - -

OCT 15 1996
MAP ROOM
ARTHUR LAKES LIBRARY
COLORADO SCHOOL OF MINES

DAVIS MESA, COLO.
SE/4 PARADOX 15 QUADRANGLE
N3815-W10845/7.5

1960 OFFICE COPY

3701
C222
USE ONLY
U5