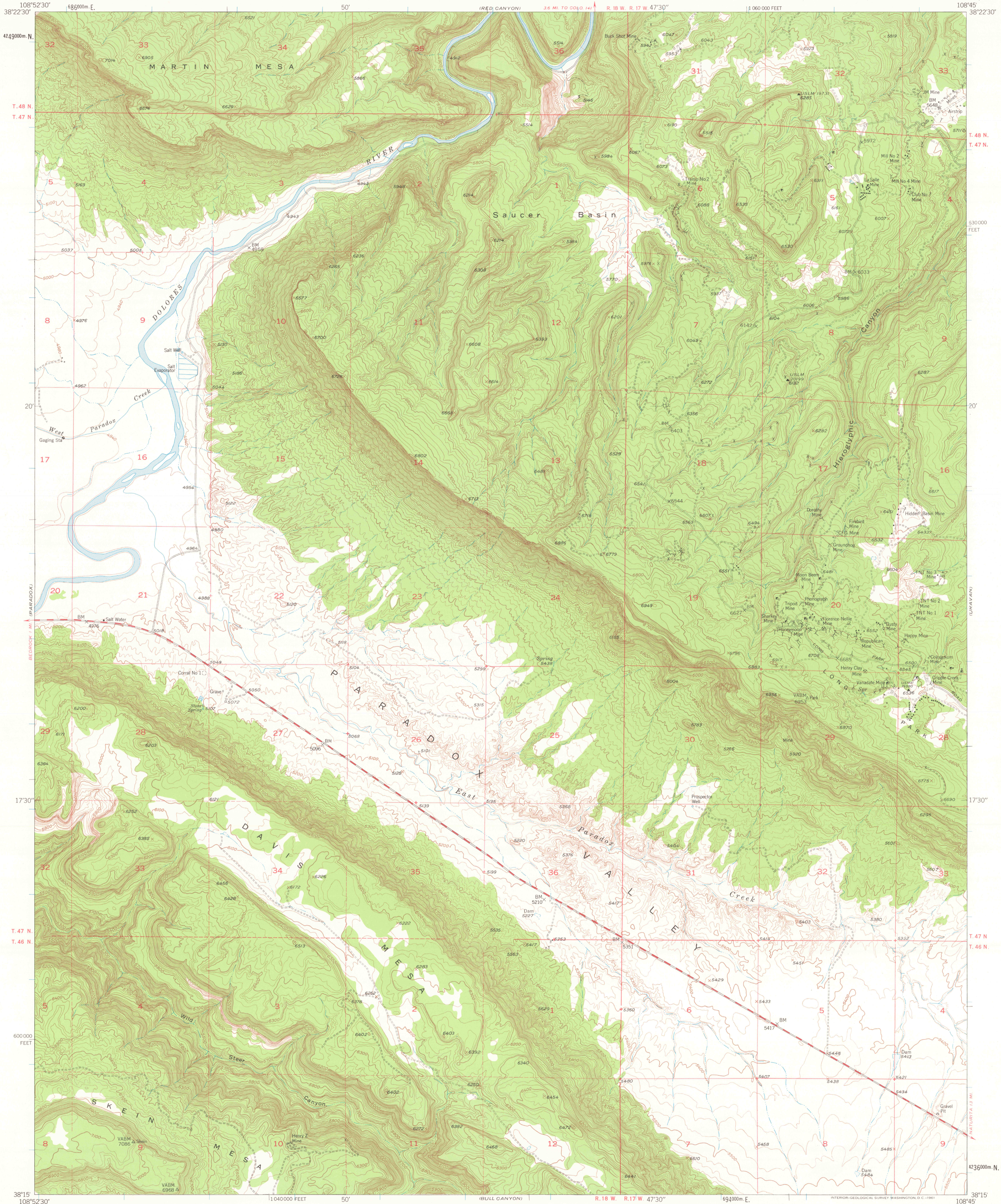
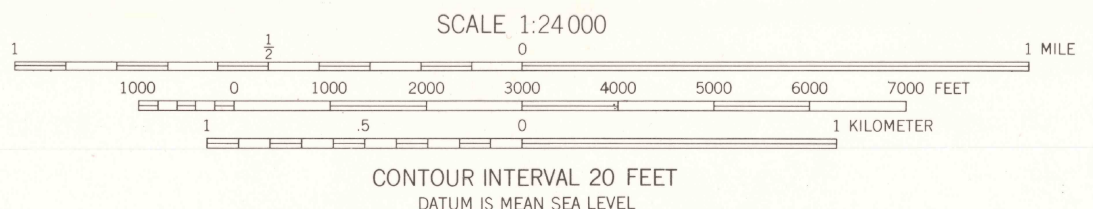


UNITED STATES  
DEPARTMENT OF THE INTERIOR  
GEOLOGICAL SURVEY

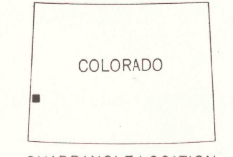
DAVIS MESA QUADRANGLE  
COLORADO-MONTROSE CO.  
7.5 MINUTE SERIES (TOPOGRAPHIC)  
SE/4 PARADOX 15 QUADRANGLE



Mapped, edited, and published by the Geological Survey  
Control by USGS and USC&GS  
Topography from aerial photographs by photogrammetric methods  
Aerial photographs taken 1947. Field check 1948. Revised 1960  
Polyconic projection. 1927 North American datum  
10,000-foot grid based on Colorado coordinate system,  
south zone  
1000-meter Universal Transverse Mercator grid ticks,  
zone 12, shown in blue  
Dashed land lines indicate approximate locations  
Land lines omitted in T. 46 N.-R. 18 W. and  
T. 47 N.-R. 18 W. because of insufficient data



ROAD CLASSIFICATION  
Medium-duty ——— Light-duty ———  
Unimproved dirt = = = = =



THIS MAP COMPLIES WITH NATIONAL MAP ACCURACY STANDARDS  
FOR SALE BY U.S. GEOLOGICAL SURVEY, DENVER 25, COLORADO OR WASHINGTON 25, D. C.  
A FOLDER DESCRIBING TOPOGRAPHIC MAPS AND SYMBOLS IS AVAILABLE ON REQUEST

USGS  
Historical File  
Topographic Division

DAVIS MESA, COLO.  
SE/4 PARADOX 15 QUADRANGLE  
N3815-W10845/7.5  
1960

2300  
OCT 13 1977