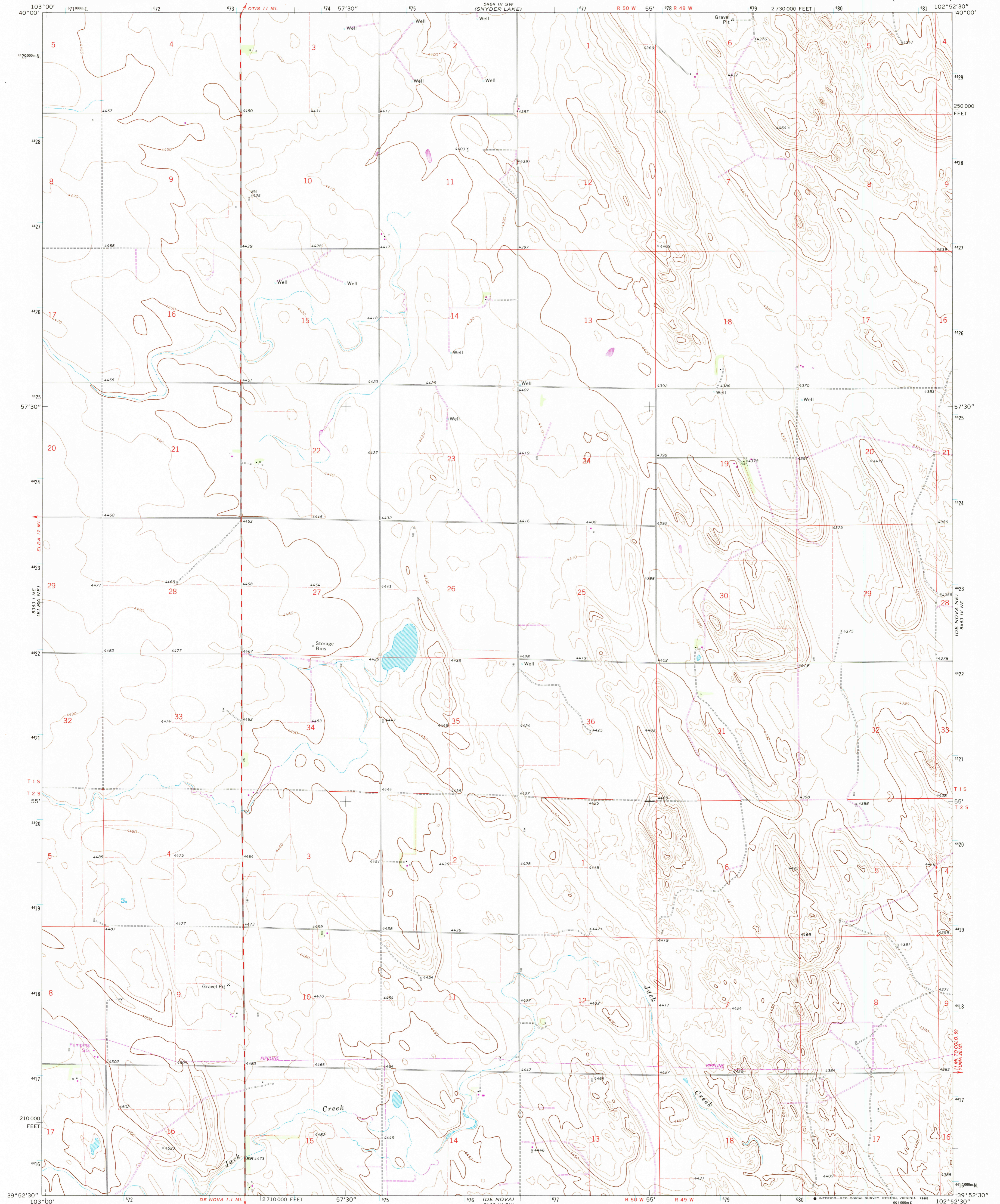
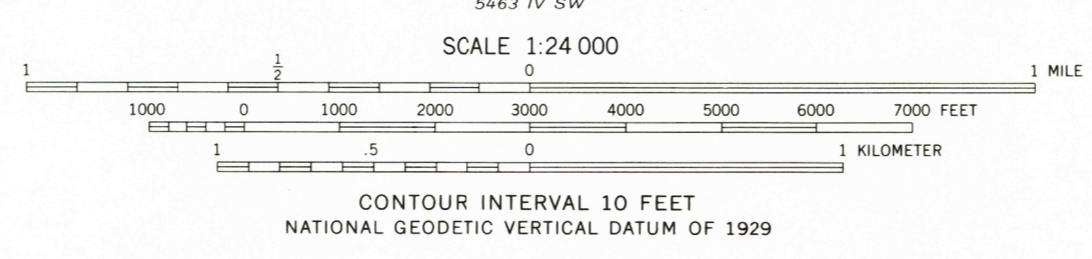
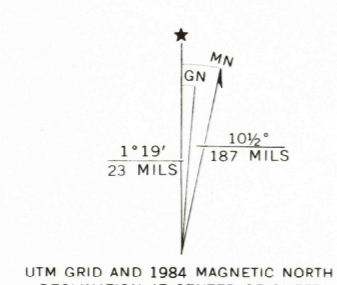


UNITED STATES  
DEPARTMENT OF THE INTERIOR  
GEOLOGICAL SURVEY

DE NOVA NW QUADRANGLE  
COLORADO—WASHINGTON CO.  
7.5 MINUTE SERIES (TOPOGRAPHIC)



Mapped, edited, and published by the Geological Survey  
Control by USGS and NOS/NOAA  
Topography by photogrammetric methods from aerial photographs taken 1973. Field checked 1974  
Projection and 10,000-foot grid ticks: Colorado coordinate system, north zone (Lambert conformal conic) 1000-meter Universal Transverse Mercator grid ticks, zone 13, shown in blue. 1927 North American Datum  
Fine red dashed lines indicate selected fence lines  
To place on the predicted North American Datum 1983 move the projection lines 4 meters north and 42 meters east as shown by dashed corner ticks



ROAD CLASSIFICATION

Primary highway, hard surface	Light-duty road, hard or improved surface
Secondary highway, hard surface	Unimproved road
Interstate Route	U. S. Route
	State Route

THIS MAP COMPLIES WITH NATIONAL MAP ACCURACY STANDARDS  
FOR SALE BY U. S. GEOLOGICAL SURVEY, DENVER, COLORADO 80225, OR RESTON, VIRGINIA 22092  
A FOLDER DESCRIBING TOPOGRAPHIC MAPS AND SYMBOLS IS AVAILABLE ON REQUEST

Revisions shown in purple compiled from aerial photographs taken 1980 and other source data. This information not field checked. Map edited 1984

DE NOVA NW, COLO.  
39102-H8-TF-024  
1974  
PHOTOREVISED 1984  
DMA 5463 IV NW—SERIES V877

RETURN TO:  
USGS MAP HISTORICAL MAP ARCHIVES