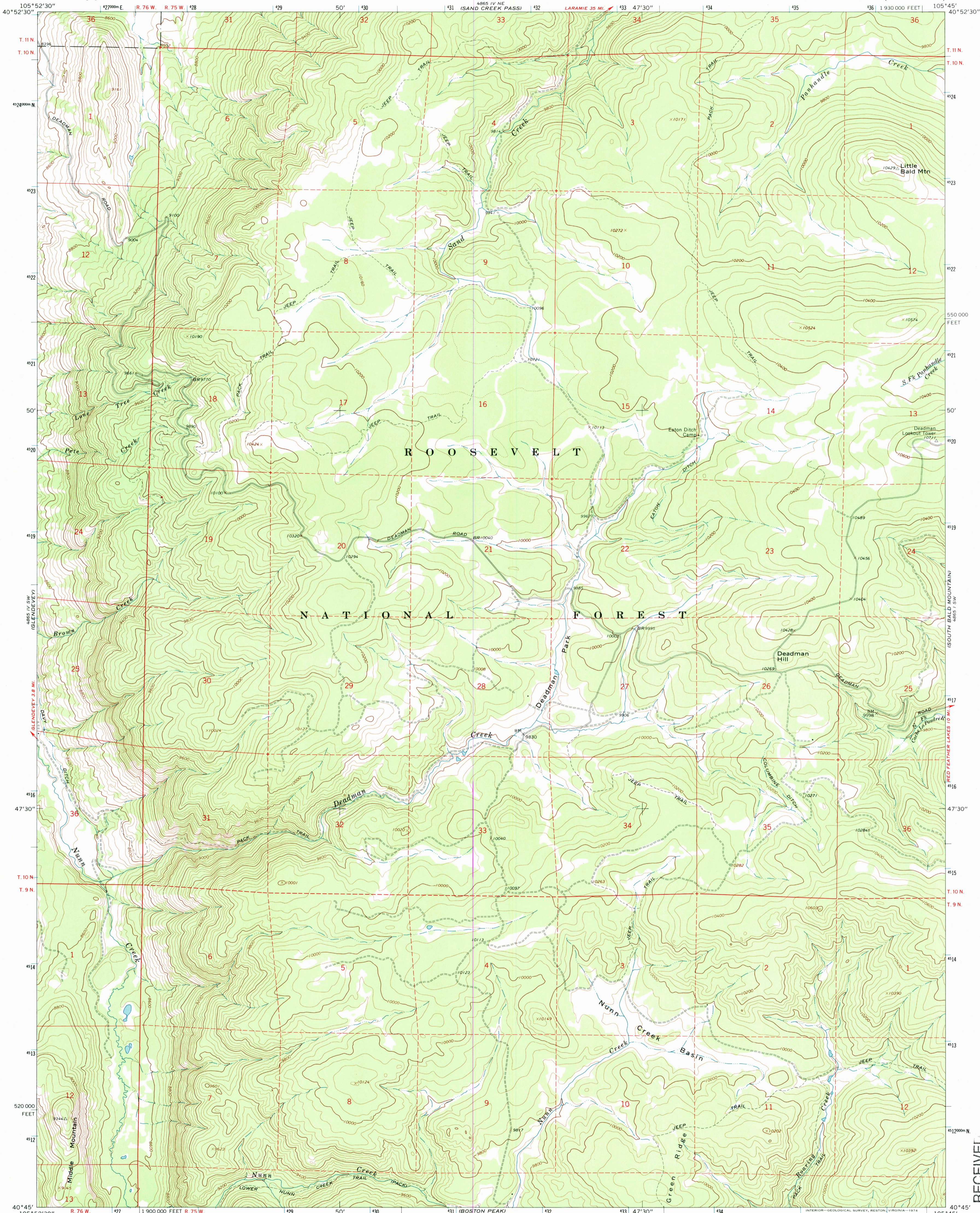




U.S. DEPARTMENT OF THE INTERIOR  
U.S. GEOLOGICAL SURVEY

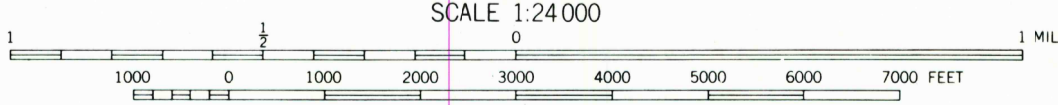
DEADMAN QUADRANGLE  
COLORADO—LARIMER CO.  
7.5 MINUTE SERIES (TOPOGRAPHIC)



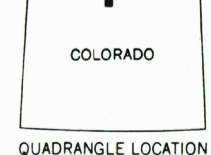
ROOSEVELT

NATIONAL FOREST

SCALE 1:24 000



CONTOUR INTERVAL 40 FEET  
DOTTED LINES REPRESENT 20 FOOT CONTOURS  
NATIONAL GEODETIC VERTICAL DATUM OF 1929



ROAD CLASSIFICATION  
Light-duty ——— Unimproved dirt - - - - -

DEADMAN, COLO.  
N4045—W10545/7.5

1967

AMS 4865 IV SE—SERIES V877

THIS MAP COMPLIES WITH NATIONAL MAP ACCURACY STANDARDS  
FOR SALE BY U.S. GEOLOGICAL SURVEY, P.O. BOX 25286, DENVER, COLORADO 80225  
A FOLDER DESCRIBING TOPOGRAPHIC MAPS AND SYMBOLS IS AVAILABLE ON REQUEST

RECEIVED  
SEP 30 2001

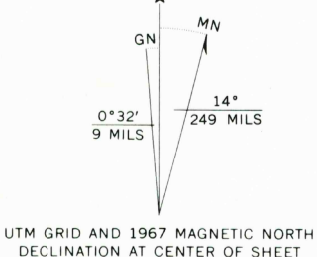
USGS NMD  
HISTORICAL MAP ARCHIVE



ISBN 0-607-11634-2

Mapped, edited, and published by the Geological Survey

Control by USGS and USC&GS  
Topography by photogrammetric methods from aerial photographs taken 1966. Field checked 1967  
Polyconic projection. 1927 North American datum  
10,000-foot grid based on Colorado coordinate system, north zone  
1000-meter Universal Transverse Mercator grid ticks, zone 13, shown in blue  
Fine red dashed lines indicate selected fence lines  
Certain land lines are omitted because of insufficient data



TOTAL RECOVERED FIBER 28%

CRACK MOUNTAIN

LEATON RESERVOIR

IRAWAY LAKES

IRAWAY LAKES