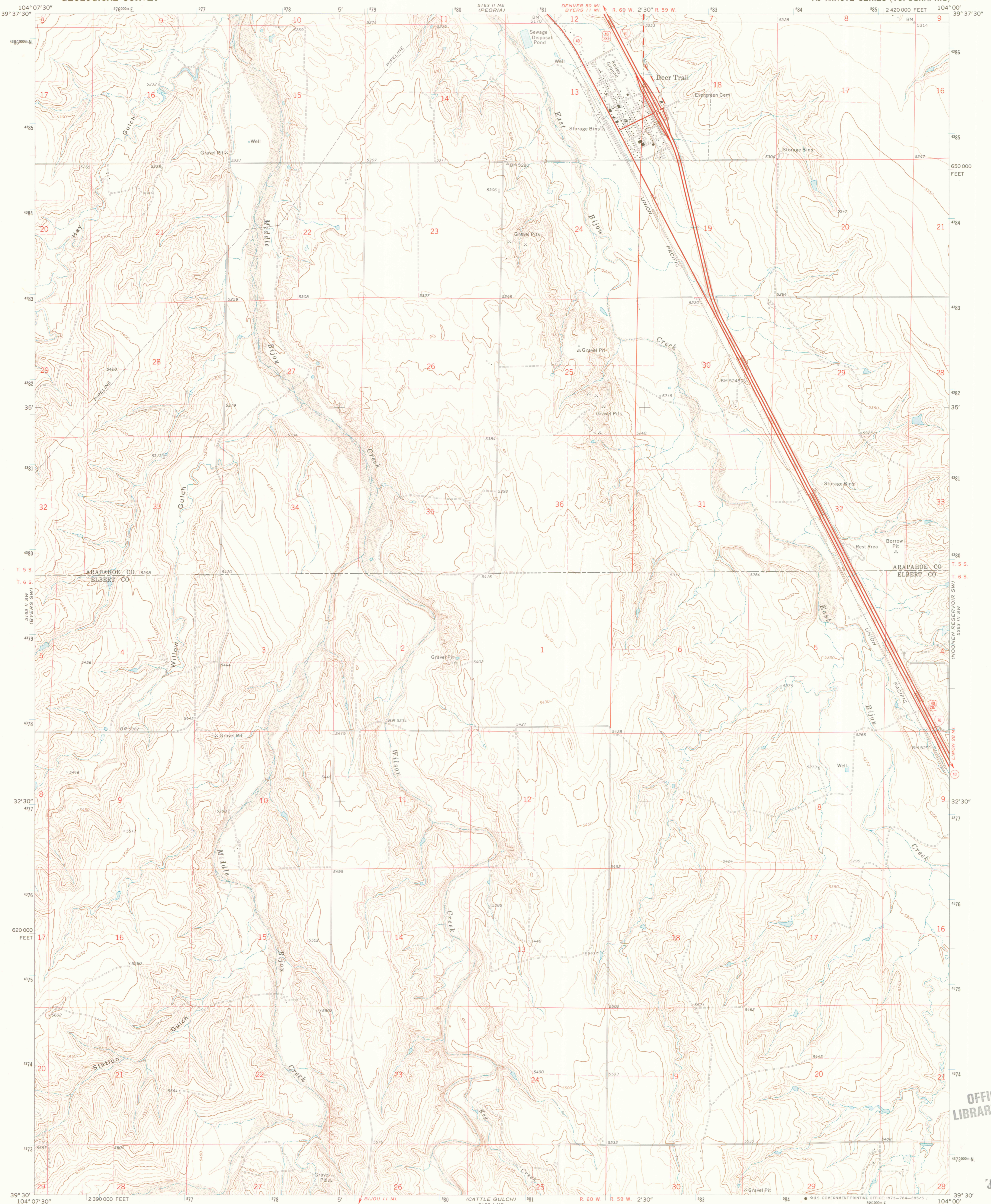
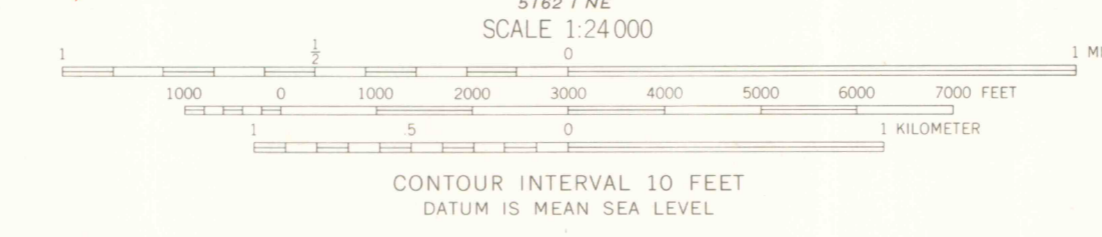
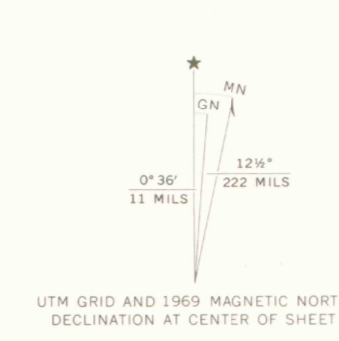


UNITED STATES  
DEPARTMENT OF THE INTERIOR  
GEOLOGICAL SURVEY

DEER TRAIL QUADRANGLE  
COLORADO  
7.5 MINUTE SERIES (TOPOGRAPHIC)



Maped, edited, and published by the Geological Survey  
Control by USGS and USC&GS  
Topography by photogrammetric methods from aerial photographs taken 1968. Field checked 1969  
Polyconic projection. 1927 North American datum  
10,000-foot grid based on Colorado coordinate system, central zone  
1000-meter Universal Transverse Mercator grid ticks, zone 13, shown in blue  
Fine red dashed lines indicate selected fence lines



**ROAD CLASSIFICATION**

Primary highway, hard surface	Light-duty road, hard or improved surface
Secondary highway, hard surface	Unimproved road
Interstate Route	U. S. Route
State Route	

LIBRARY  
DOCUMENT COLLECTION  
DEC 18 1973  
UNIVERSITY OF WYOMING  
LARAMIE

THIS MAP COMPLIES WITH NATIONAL MAP ACCURACY STANDARDS  
FOR SALE BY U. S. GEOLOGICAL SURVEY, DENVER, COLORADO 80225, OR WASHINGTON, D. C. 20242  
A FOLDER DESCRIBING TOPOGRAPHIC MAPS AND SYMBOLS IS AVAILABLE ON REQUEST

DEER TRAIL, COLO.  
N 3930-W 10400/7.5  
1969  
AMS 5163 II SE-SERIES V877

OFFICE COPY  
LIBRARY USE ONLY

JUL 06 2000  
MAP FROM  
ARTHUR LAKE'S LIBRARY  
COLORADO SCHOOL OF MINES  
G37 00  
S24  
G64  
G37005  
w/d