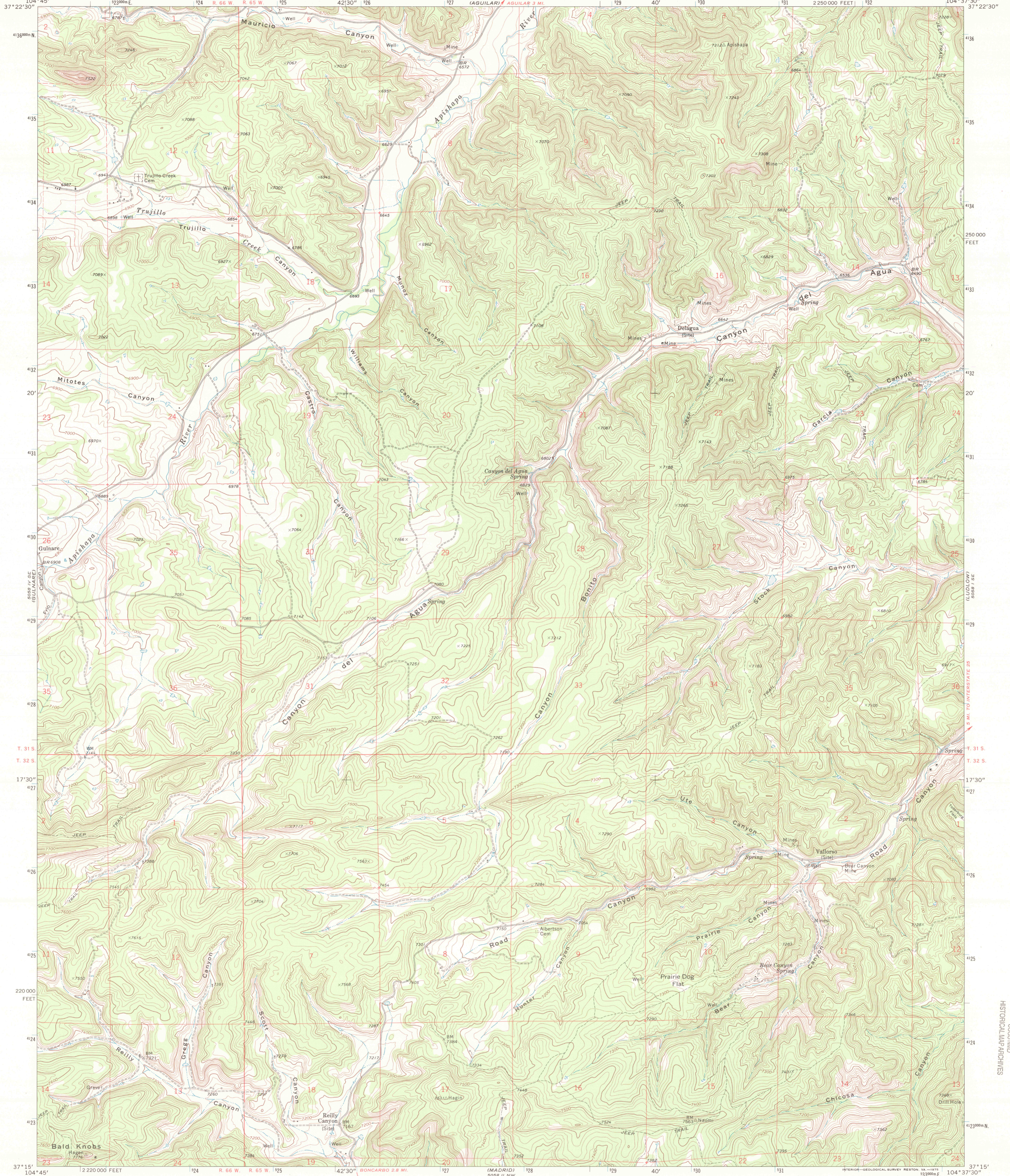


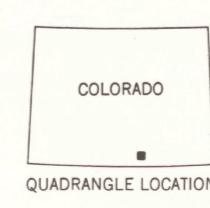
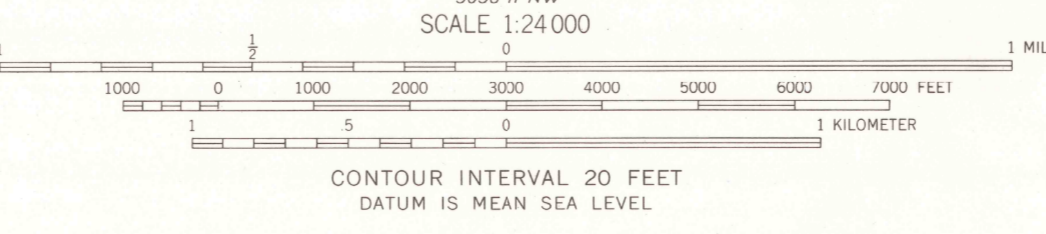
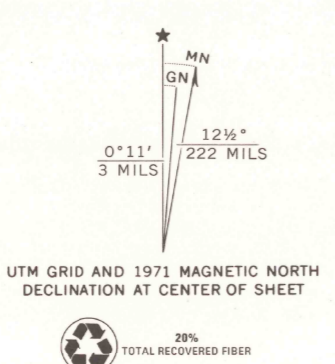


U.S. DEPARTMENT OF THE INTERIOR
U.S. GEOLOGICAL SURVEY

DELAGUA QUADRANGLE
COLORADO—LAS ANIMAS CO.
7.5 MINUTE SERIES (TOPOGRAPHIC)



Mapped, edited, and published by the Geological Survey
Control by USGS and USC&GS
Topography by photogrammetric methods from aerial photographs taken 1970. Field checked 1971
Projection and 10,000-foot grid ticks: Colorado coordinate system, south zone (Lambert conformal conic) 1000-meter Universal Transverse Mercator grid ticks, zone 13, shown in blue. 1927 North American datum
Fine red dashed lines indicate selected fence lines



ROAD CLASSIFICATION

Primary highway, hard surface	Light-duty road, hard or improved surface
Secondary highway, hard surface	Unimproved road
Interstate Route	U. S. Route
	State Route

THIS MAP COMPLIES WITH NATIONAL MAP ACCURACY STANDARDS
FOR SALE BY U.S. GEOLOGICAL SURVEY, P.O. BOX 25286, DENVER, COLORADO 80225
A FOLDER DESCRIBING TOPOGRAPHIC MAPS AND SYMBOLS IS AVAILABLE ON REQUEST

DELAGUA, COLO.
N3715-W10437.5/7.5
1971

AMS 5058 I SW—SERIES V877

RECEIVED
OCT 31 1999
USGS/NM
HISTORICAL MAP ARCHIVES

