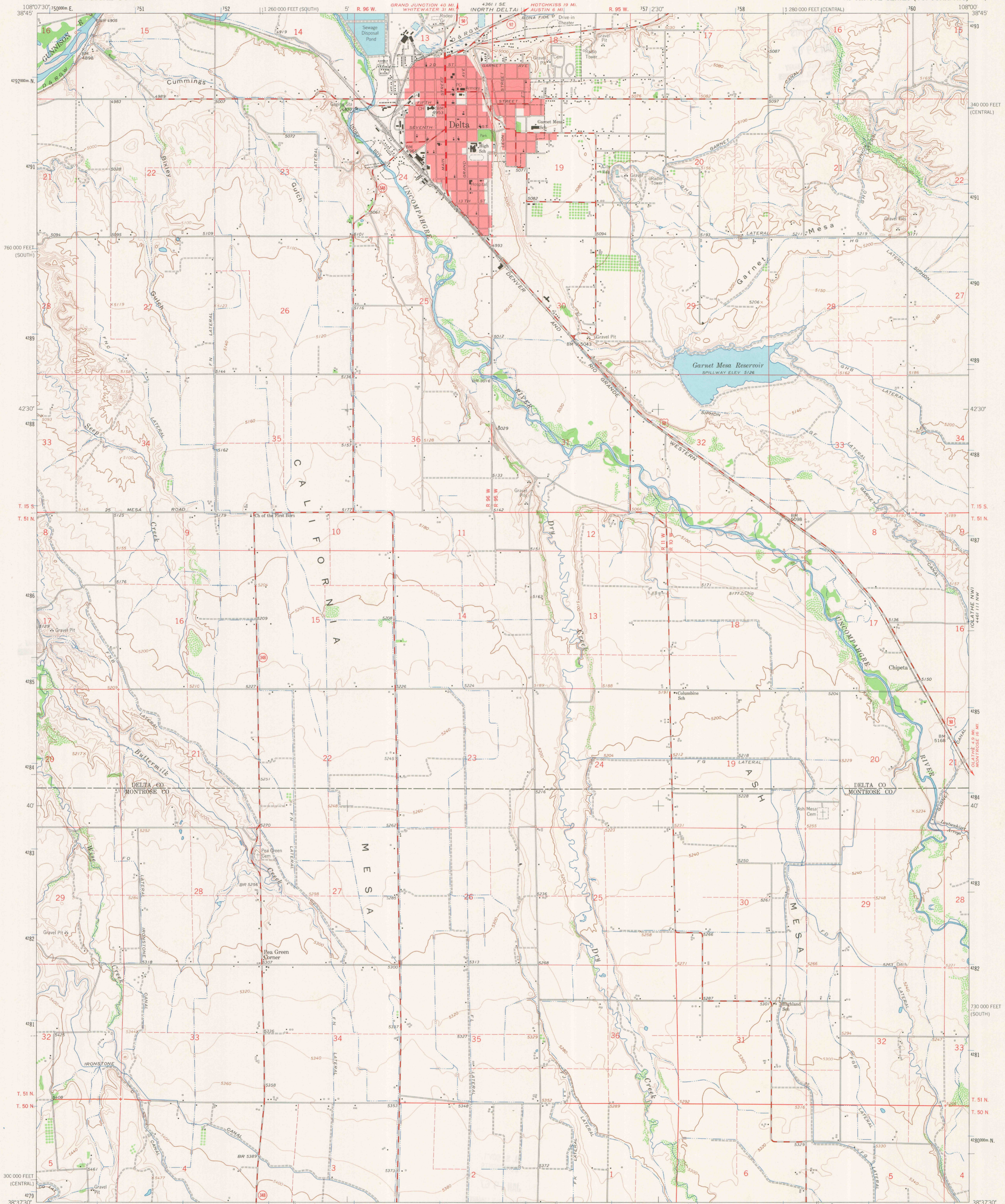


4481 1/4 SW
GROSVENOR CITY



Mapped, edited, and published by the Geological Survey

Control by USGS and USC&GS

Topography by photogrammetric methods from aerial photographs taken 1960. Field checked 1962

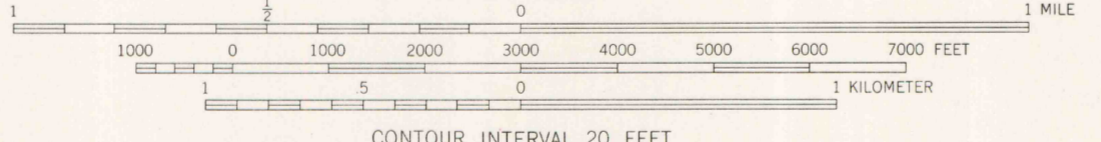
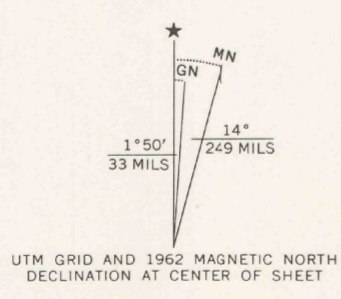
Polyconic projection: 1927 North American datum

10,000-foot grids based on Colorado coordinate system, central and south zones

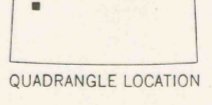
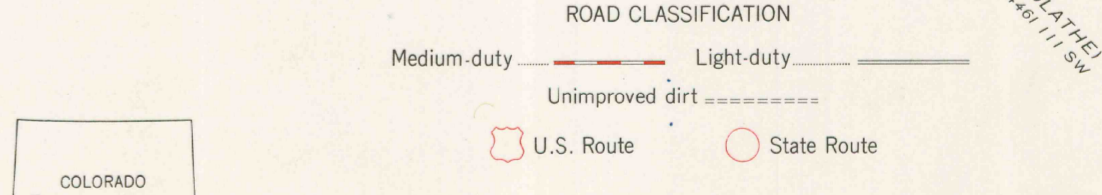
1000-meter Universal Transverse Mercator grid ticks, zone 12, shown in blue

Red tint indicates areas in which only landmark buildings are shown

Fine red dashed lines indicate selected fence lines



CONTOUR INTERVAL 20 FEET
DOTTED LINES REPRESENT 10 FOOT CONTOURS
DATUM IS MEAN SEA LEVEL



OFFICE COPY

DELTA, COLO.
N3837.5-W10800.7/5

1962

AMS 4361 11 NE-SERIES 9V77

THIS MAP COMPLIES WITH NATIONAL MAP ACCURACY STANDARDS
FOR SALE BY U.S. GEOLOGICAL SURVEY, DENVER, COLORADO 80225, OR WASHINGTON, D.C. 20242
A FOLDER DESCRIBING TOPOGRAPHIC MAPS AND SYMBOLS IS AVAILABLE ON REQUEST

LIBRARY USE ONLY