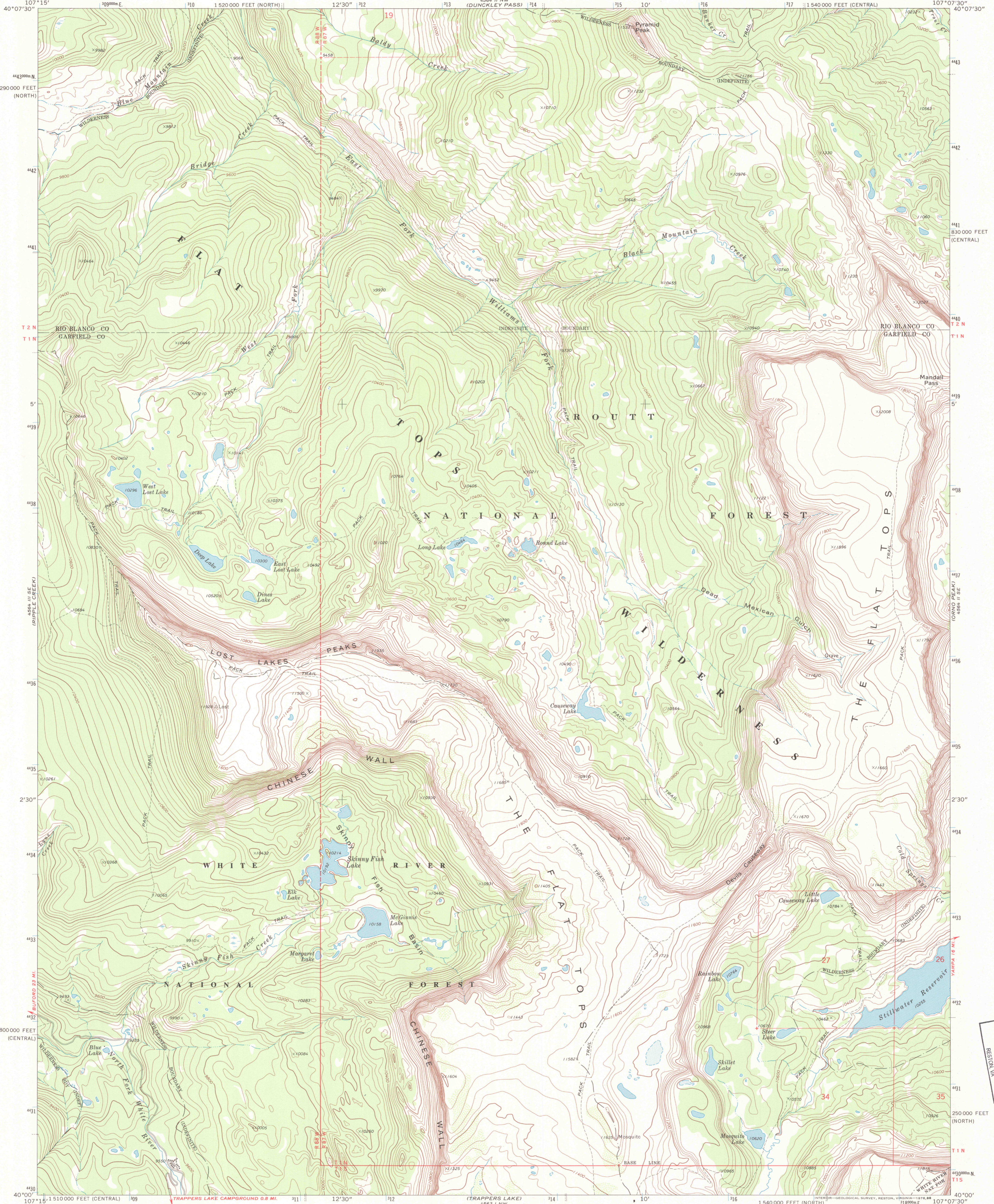


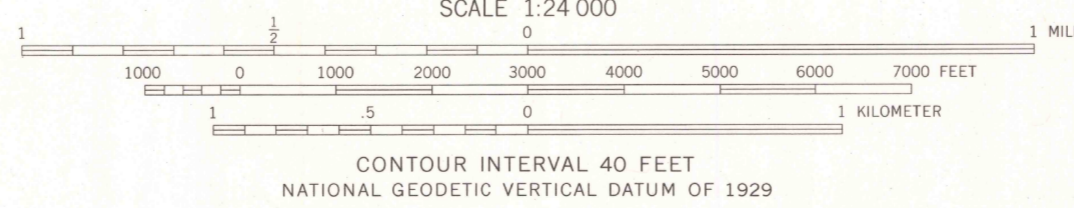
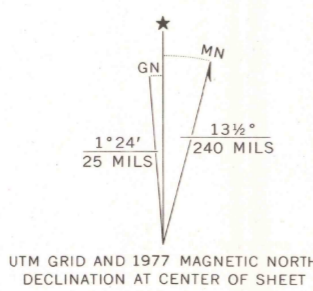


U.S. DEPARTMENT OF THE INTERIOR
U.S. GEOLOGICAL SURVEY

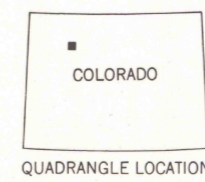
DEVILS CAUSEWAY QUADRANGLE
COLORADO
7.5 MINUTE SERIES (TOPOGRAPHIC)



Mapped, edited, and published by the Geological Survey
Control by USGS, NOS/NOAA, and U.S. Forest Service
Topography by photogrammetric methods from aerial photographs taken 1964-65. Field checked 1974. Map edited 1977
Projection: Colorado coordinate system, central zone (Lambert conformal conic)
10,000-foot grid ticks based on Colorado coordinate system, central and north zone
1000-meter Universal Transverse Mercator grid ticks, zone 13, shown in blue. 1927 North American datum
Where omitted, land lines have not been established



CONTOUR INTERVAL 40 FEET
NATIONAL GEODETIC VERTICAL DATUM OF 1929



ROAD CLASSIFICATION
Primary highway, hard surface
Secondary highway, hard surface
Light-duty road, hard or improved surface
Unimproved road
Interstate Route
U. S. Route
State Route

DEVILS CAUSEWAY, COLO.
N4000-W10707.5/7.5

1977

AMS 4564 II SW - SERIES V887

U.S. GEOLOGICAL SURVEY
LIBRARY
JUN 18 2002
RESTON, VA

