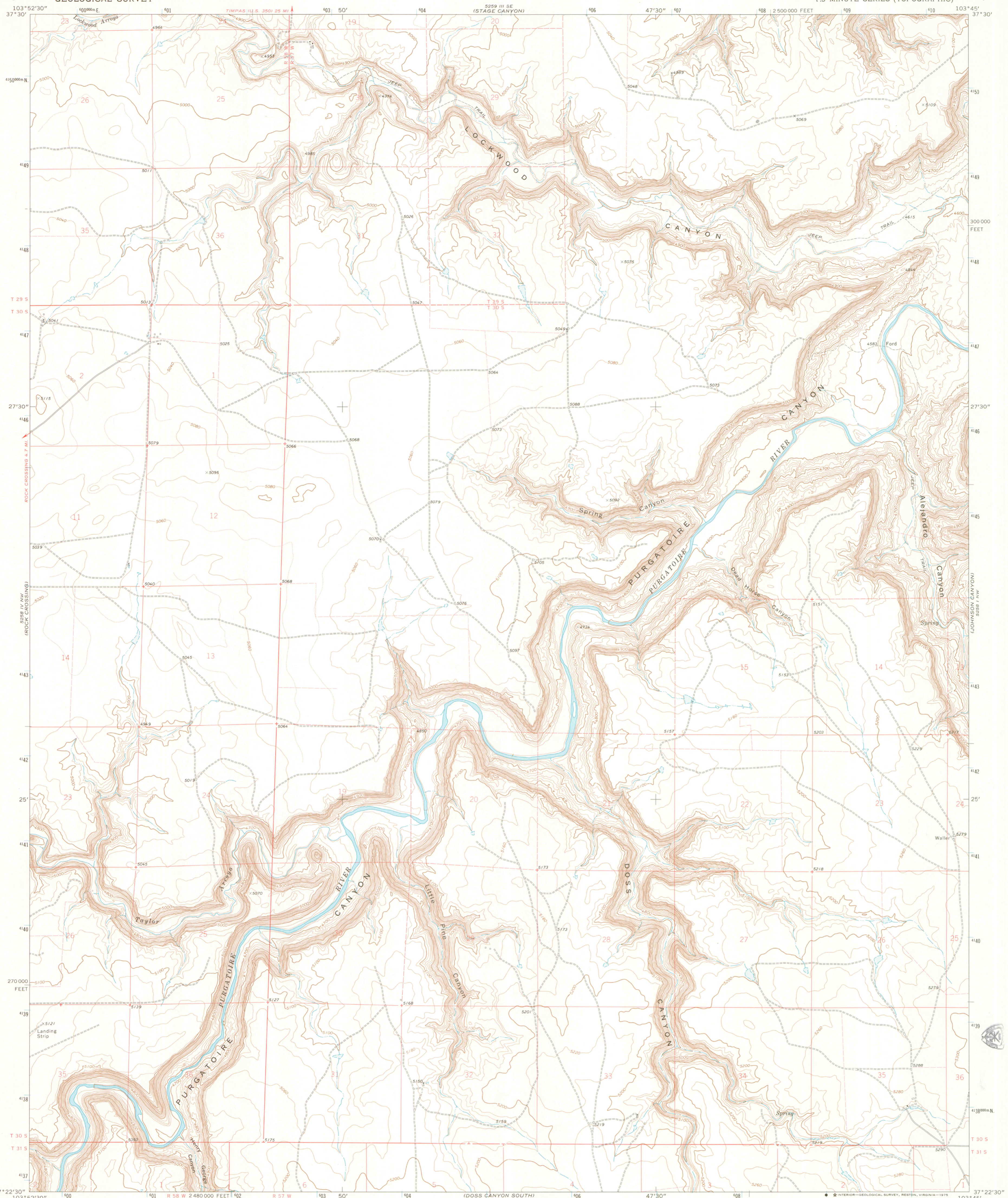


I 19-213: C71/D724N

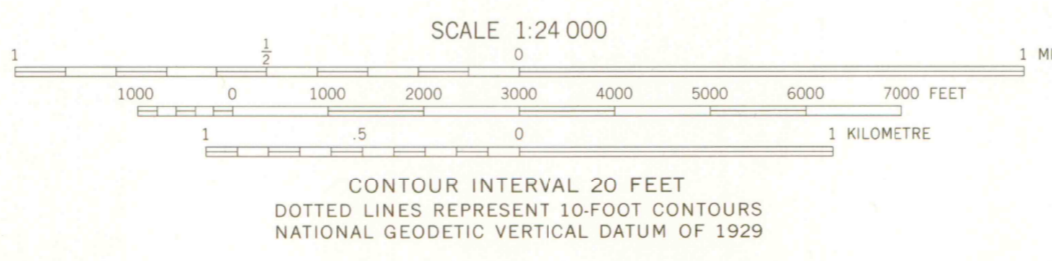
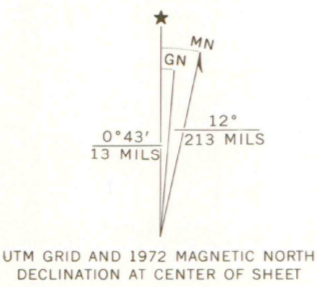
SOUTHWEST MISSOURI STATE UNIVERSITY LIBRARY
U.S. DEPOSITORY COPY
DEC 15 1975

DOSS CANYON NORTH QUADRANGLE
COLORADO—LAS ANIMAS CO.
7.5 MINUTE SERIES (TOPOGRAPHIC)

UNITED STATES
DEPARTMENT OF THE INTERIOR
GEOLOGICAL SURVEY

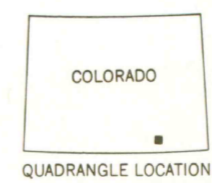


Mapped, edited, and published by the Geological Survey
Control by USGS, NOS/NOAA, and U. S. Forest Service
Topography by photogrammetric methods from aerial photographs taken 1971. Field checked 1972
Projection and 10,000-foot grid ticks: Colorado coordinate system, south zone (Lambert conformal conic) 1000-metre Universal Transverse Mercator grid ticks, zone 13, shown in blue. 1927 North American datum
Fine red dashed lines indicate selected fence lines
Certain land lines are omitted because of insufficient data



SMSU MAP LIBRARY

ROAD CLASSIFICATION
Primary highway, hard surface
Secondary highway, hard surface
Light-duty road, hard or improved surface
Unimproved road
Interstate Route
U. S. Route
State Route



S.M.S. LIBRARY

THIS MAP COMPLIES WITH NATIONAL MAP ACCURACY STANDARDS
FOR SALE BY U.S. GEOLOGICAL SURVEY, DENVER, COLORADO 80225, OR RESTON, VIRGINIA 22092
A FOLDER DESCRIBING TOPOGRAPHIC MAPS AND SYMBOLS IS AVAILABLE ON REQUEST

DOSS CANYON NORTH, COLO.
N3722.5-W10345.7.5
1972
AMS 5258 IV NE—SERIES V897

OCT 26 2003

63700
s24
G4
MAP ROOM
4310
s24

Q.4310.C15/D724C-N/24/±19.2.13/1972