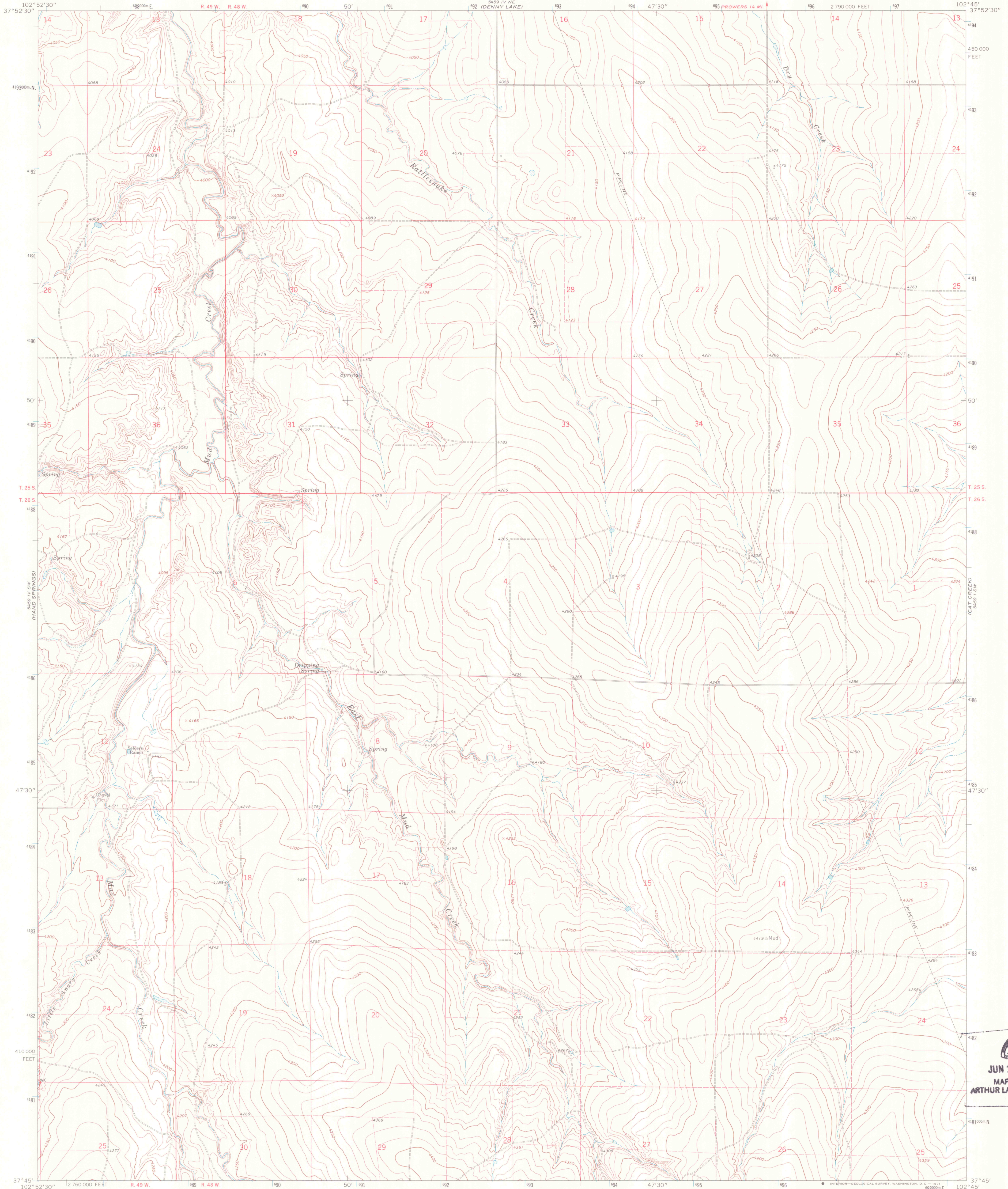


5459 IV NE
102° 52' 30"

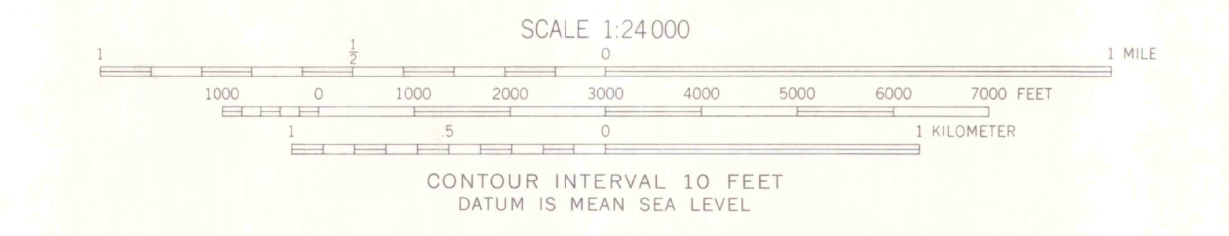
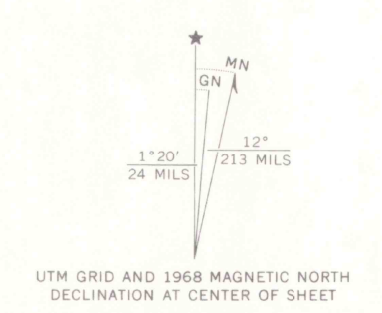
UNITED STATES
DEPARTMENT OF THE INTERIOR
GEOLOGICAL SURVEY

DRIPPING SPRING QUADRANGLE
COLORADO—BENT CO.
7.5 MINUTE SERIES (TOPOGRAPHIC)

5459 IV NE
102° 45'



Mapped, edited, and published by the Geological Survey
Control by USGS and USCGS
Topography by photogrammetric methods from aerial
photographs taken 1967. Field checked 1968.
Polyconic projection. 1927 North American datum
10,000-foot grid based on Colorado coordinate system,
south zone
1000-meter Universal Transverse Mercator grid ticks,
zone 13, shown in blue
Fine red dashed lines indicate selected fence lines
Land lines in part are based on cultural developments
and are not reflected in the original land survey



ROAD CLASSIFICATION
Light-duty road, all weather, improved surface
Unimproved road, fair or dry weather

OFFICE COPY
LIBRARY
DRIPPING SPRING, COLO. (w/o)
N3745-W10245/7.5
1968
AMS 5459 IV SE—SERIES V877

G 3760
s24
.G4
MAP ROOM
G 3701
C222
s24
U5

COLORADO
QUADRANGLE LOCATION

12' 24" 124
1:24,000
24 MILES

UTM GRID AND 1968 MAGNETIC NORTH
DECLINATION AT CENTER OF SHEET

THIS MAP COMPLIES WITH NATIONAL MAP ACCURACY STANDARDS
FOR SALE BY U. S. GEOLOGICAL SURVEY, DENVER, COLORADO 80225, OR WASHINGTON, D. C. 20242
A FOLDER DESCRIBING TOPOGRAPHIC MAPS AND SYMBOLS IS AVAILABLE ON REQUEST

102° 52' 30" 12 760 000 FEET R. 49 W. 189 R. 48 W. 190 50' 191 192 193 194 47' 30" 195 196 2 790 000 FEET 197 102° 45' 37° 52' 30"

JUN 16 1989
MAP ROOM
ARTHUR LAKES LIBRARY

