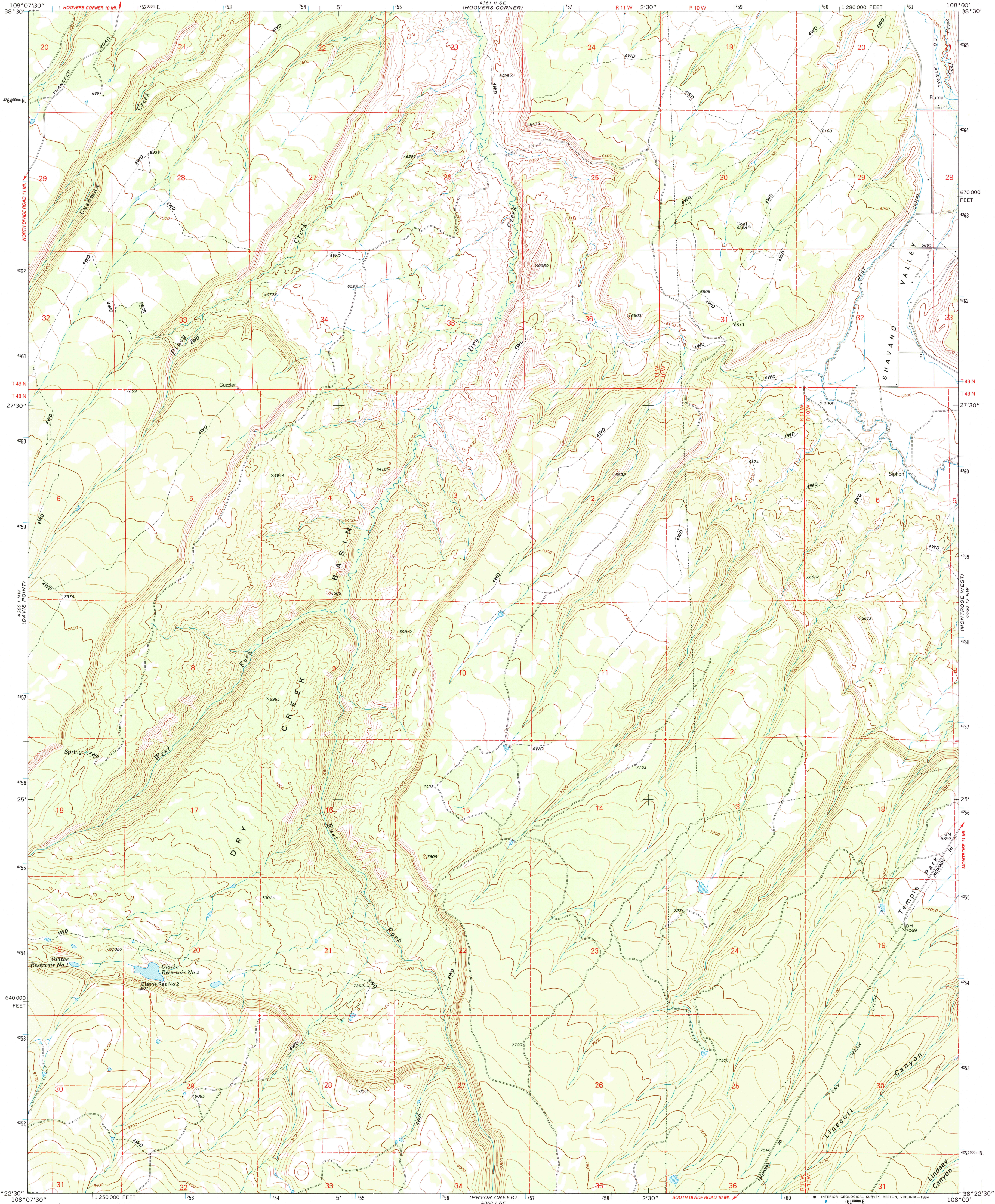
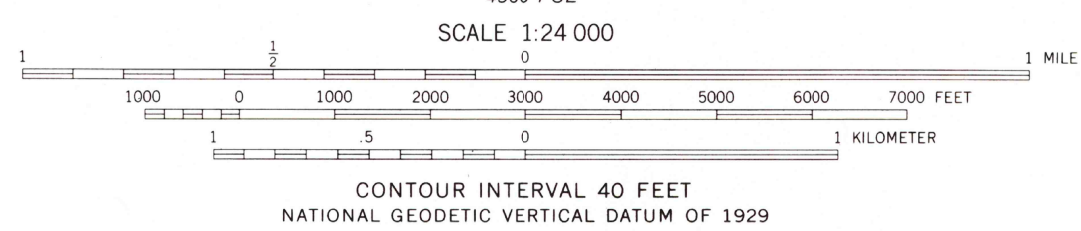
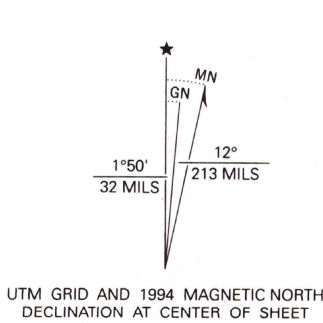


UNITED STATES
DEPARTMENT OF THE INTERIOR
GEOLOGICAL SURVEY

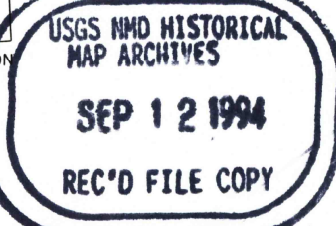
DRY CREEK BASIN QUADRANGLE
COLORADO—MONTROSE CO.
7.5 MINUTE SERIES (TOPOGRAPHIC)



Maped by the U.S. Forest Service
Produced by the United States Geological Survey
Control by USGS and NOS/NOAA
Compiled from aerial photographs taken 1964. Revised from aerial
photographs taken 1988 and other sources. Field checked 1990
Map edited 1994
North American Datum of 1927 (NAD 27). Projection and
10000-foot ticks: Colorado Coordinate System, south zone
(Lambert Conformal Conic)
Blue 1000-meter Universal Transverse Mercator ticks, zone 12
North American Datum of 1983 (NAD 83) is shown by dashed
corner ticks. The values of the shift between NAD 27 and NAD 83
for 7.5-minute intersections are obtainable from National Geodetic
Survey NADCON software
Fine red dashed lines indicate selected fence and field lines where
generally visible on aerial photographs. This information is unchecked



COMPLIES WITH U.S. GEOLOGICAL SURVEY STANDARD FOR SPATIAL ACCURACY (HORIZONTAL), CLASS 2
NOT TESTED FOR COMPLIANCE WITH U.S. GEOLOGICAL SURVEY STANDARD FOR SPATIAL ACCURACY (VERTICAL)
FOR SALE BY U.S. GEOLOGICAL SURVEY
DENVER, COLORADO 80225, OR RESTON, VIRGINIA 22092
A FOLDER DESCRIBING TOPOGRAPHIC MAPS AND SYMBOLS IS AVAILABLE ON REQUEST



ROAD CLASSIFICATION
Primary highway, hard surface ————
Secondary highway, hard surface ————
Unimproved road ————
Interstate Route ————
U. S. Route ————
State Route ————

DRY CREEK BASIN, COLO.
38108-D1-TF-024

1994

DMA 4360 1 NE-SERIES V877