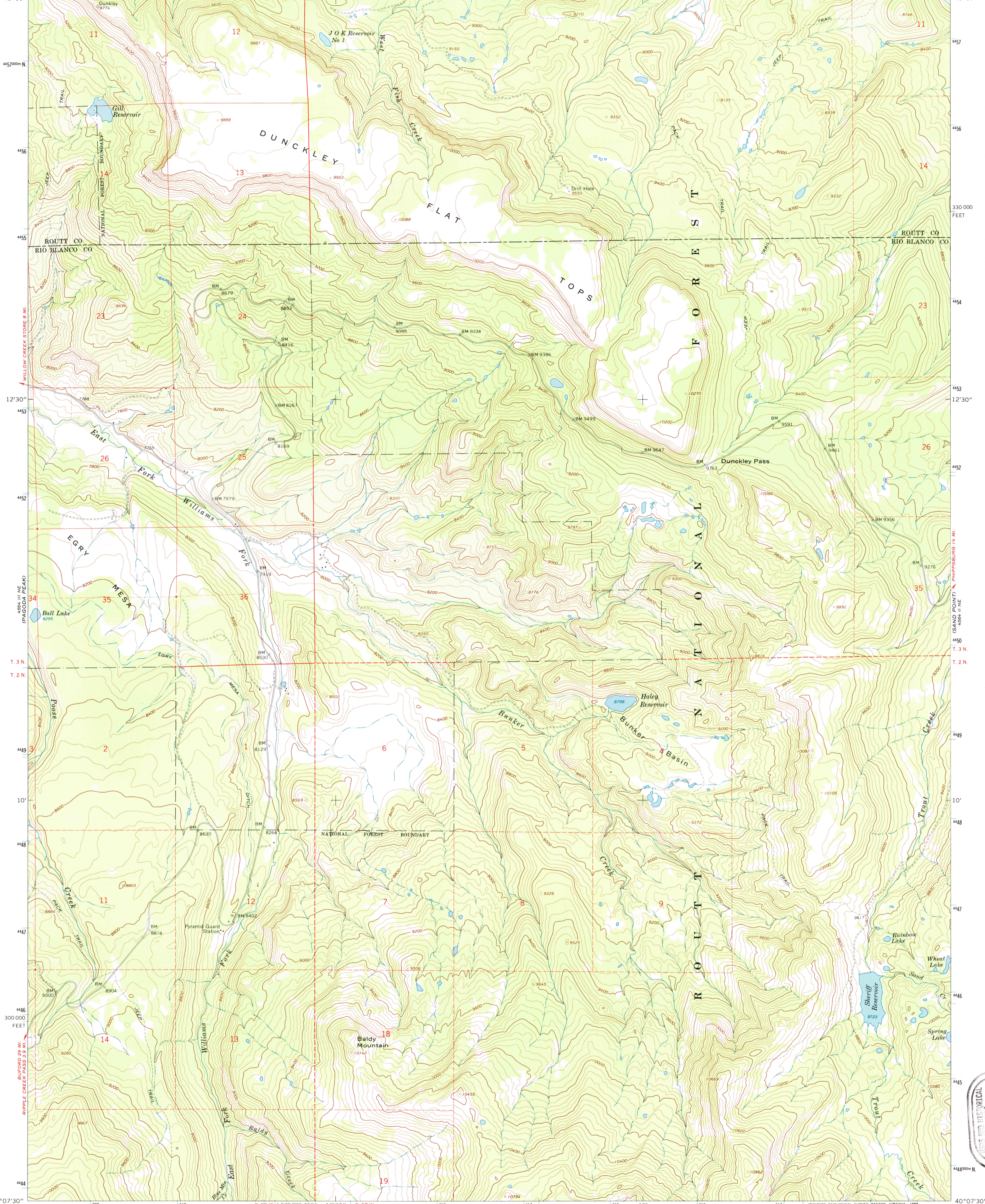
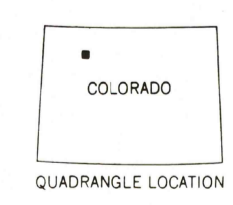
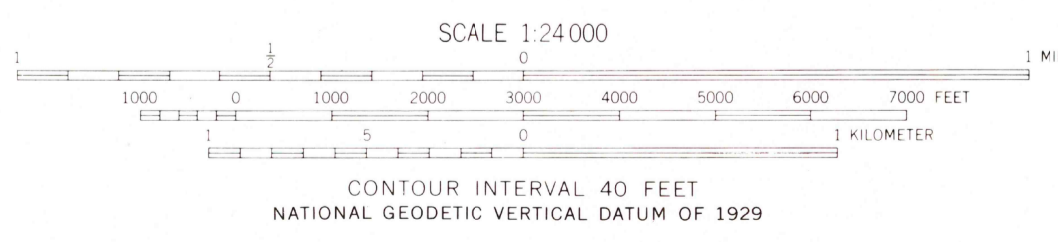
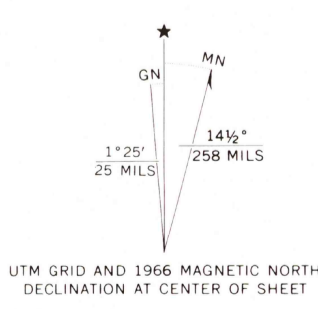


107°15' 1099000 E. 310 311 R. 88 W. 312 12°30' R. 87 W. DUNCKLEY 2.1 MI. (MOUNT HARRIS 1:62,500) 315 10' 316 317 1540000 FEET 318 107°07'30" 40°15' 4157000 N. 4156 4155 330000 FEET 4154 4153 12°30' 4152 4151 4150 4149 10' 4148 4147 300000 FEET 4146 4145 4144 40°07'30" 107°15' 309 310 311 312 313 314 315 316 317 318 319 107°07'30" 1520000 FEET 1520000 E. 1520000



Mapped, edited, and published by the Geological Survey  
Control by USGS and USC&GS  
Topography by photogrammetric methods from aerial  
photographs taken 1965. Field checked 1966.  
Polyconic projection. 1927 North American datum  
10,000-foot grid based on Colorado coordinate system,  
north zone  
1000-meter Universal Transverse Mercator grid ticks,  
zone 13, shown in blue  
Fine red dashed lines indicate selected fence lines  
Where omitted, land lines have not been established  
or are not shown because of insufficient data



ROAD CLASSIFICATION  
Light-duty ————— Unimproved dirt - - - - -

DUNCKLEY PASS, COLO.  
N4007.5-W10707.5/7.5  
1966  
AMS 4564 II NW-SERIES V877

THIS MAP COMPLIES WITH NATIONAL MAP ACCURACY STANDARDS  
FOR SALE BY U.S. GEOLOGICAL SURVEY, P.O. BOX 25286, DENVER, COLORADO 80225  
A FOLDER DESCRIBING TOPOGRAPHIC MAPS AND SYMBOLS IS AVAILABLE ON REQUEST

USGS AND HISTORICAL  
MAP ARCHIVES  
FEB 20 1993  
REC'D FILE COPY

ISBN 0-607-11706-0  
9 780607 117066