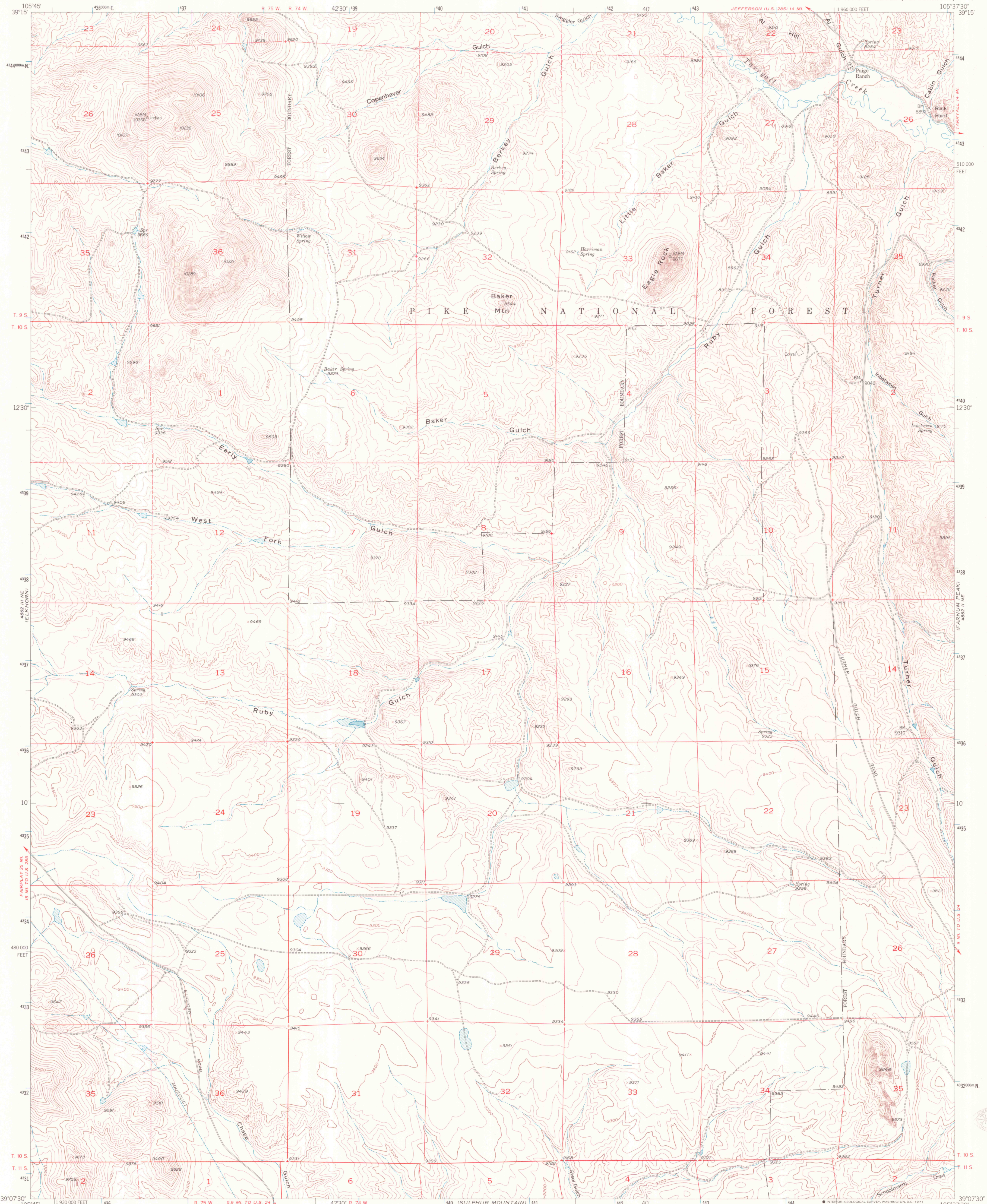


UNITED STATES  
DEPARTMENT OF THE INTERIOR  
GEOLOGICAL SURVEY

EAGLE ROCK QUADRANGLE  
COLORADO-PARK CO  
7.5 MINUTE SERIES (TOPOGRAPHIC)



Mapped, edited, and published by the Geological Survey as part of the Department of the Interior program for the development of the Missouri River Basin. Control by USGS and USC&GS. Topography from aerial photographs by multiplex methods. Aerial photographs taken 1953. Field check 1956. Polyconic projection, 1927 North American datum. 10,000-foot grid based on Colorado coordinate system, central zone. 1000-meter Universal Transverse Mercator grid ticks, zone 13, shown in blue. Dashed land lines indicate approximate locations.

SCALE 1:24,000

CONTOUR INTERVAL 20 FEET  
DATUM IS MEAN SEA LEVEL

ROAD CLASSIFICATION  
Light-duty \_\_\_\_\_ Unimproved dirt - - - - -

COLORED QUADRANGLE LOCATION

EAGLE ROCK, COLO.  
N3907.5-W10537.5/7.5  
1956  
AMS 4862 II NW-SERIES V877

THIS MAP COMPLIES WITH NATIONAL MAP ACCURACY STANDARDS  
FOR SALE BY U.S. GEOLOGICAL SURVEY, DENVER, COLORADO 80225, OR WASHINGTON, D. C. 20242  
A FOLDER DESCRIBING TOPOGRAPHIC MAPS AND SYMBOLS IS AVAILABLE ON REQUEST

NOV 1 2005

63700  
624  
.64  
MAP ROOM