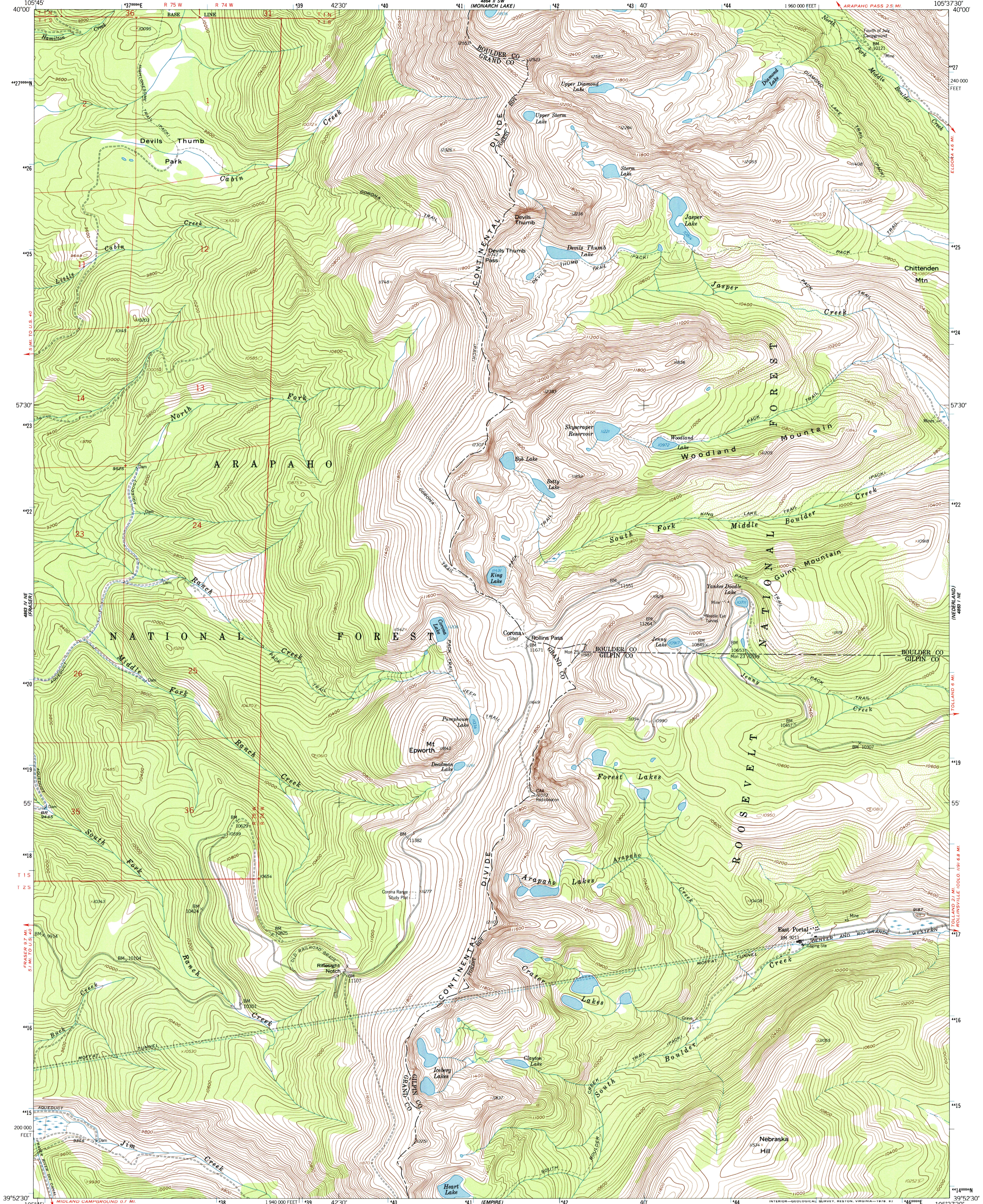


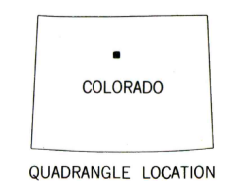
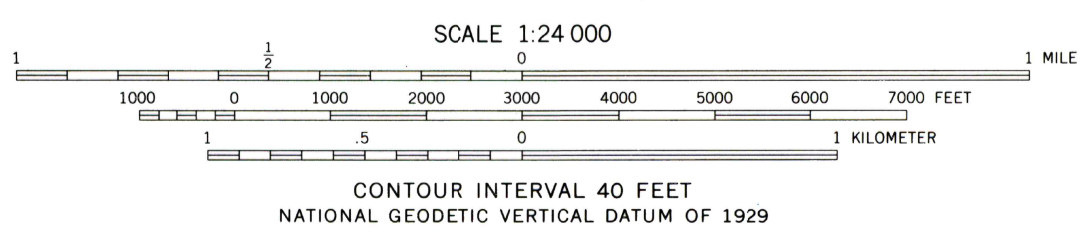
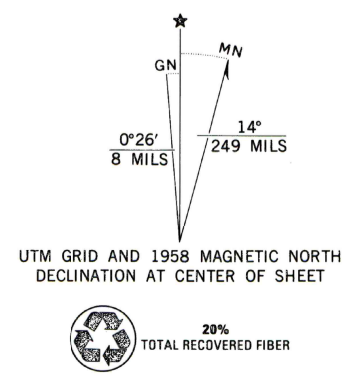


U.S. DEPARTMENT OF THE INTERIOR  
U.S. GEOLOGICAL SURVEY

EAST PORTAL QUADRANGLE  
COLORADO  
7.5 MINUTE SERIES (TOPOGRAPHIC)



Mapped, edited, and published by the Geological Survey as part of the Department of the Interior program for the development of the Missouri River Basin  
Control by USGS and USC&GS  
Topography from aerial photographs by photogrammetric methods  
Aerial photographs taken 1953. Field check 1958  
Polyconic projection. 1927 North American datum  
10,000-foot grid based on Colorado coordinate system, north zone  
1000-meter Universal Transverse Mercator grid ticks, zone 13, shown in blue  
Land lines omitted except in T.1 S., R. 75 W. and T.1 N., R. 74 and 75 W. because of insufficient data  
Unchecked elevations are shown in brown



ROAD CLASSIFICATION

Light-duty ——— Unimproved dirt - - - - -

EAST PORTAL, COLO.  
N3952.5-W10537.57.5

1958

AMS 4863 1 NW—SERIES V877

THIS MAP COMPLIES WITH NATIONAL MAP ACCURACY STANDARDS.  
FOR SALE BY U.S. GEOLOGICAL SURVEY, P.O. BOX 25286, DENVER, COLORADO 80225  
A FOLDER DESCRIBING TOPOGRAPHIC MAPS AND SYMBOLS IS AVAILABLE ON REQUEST