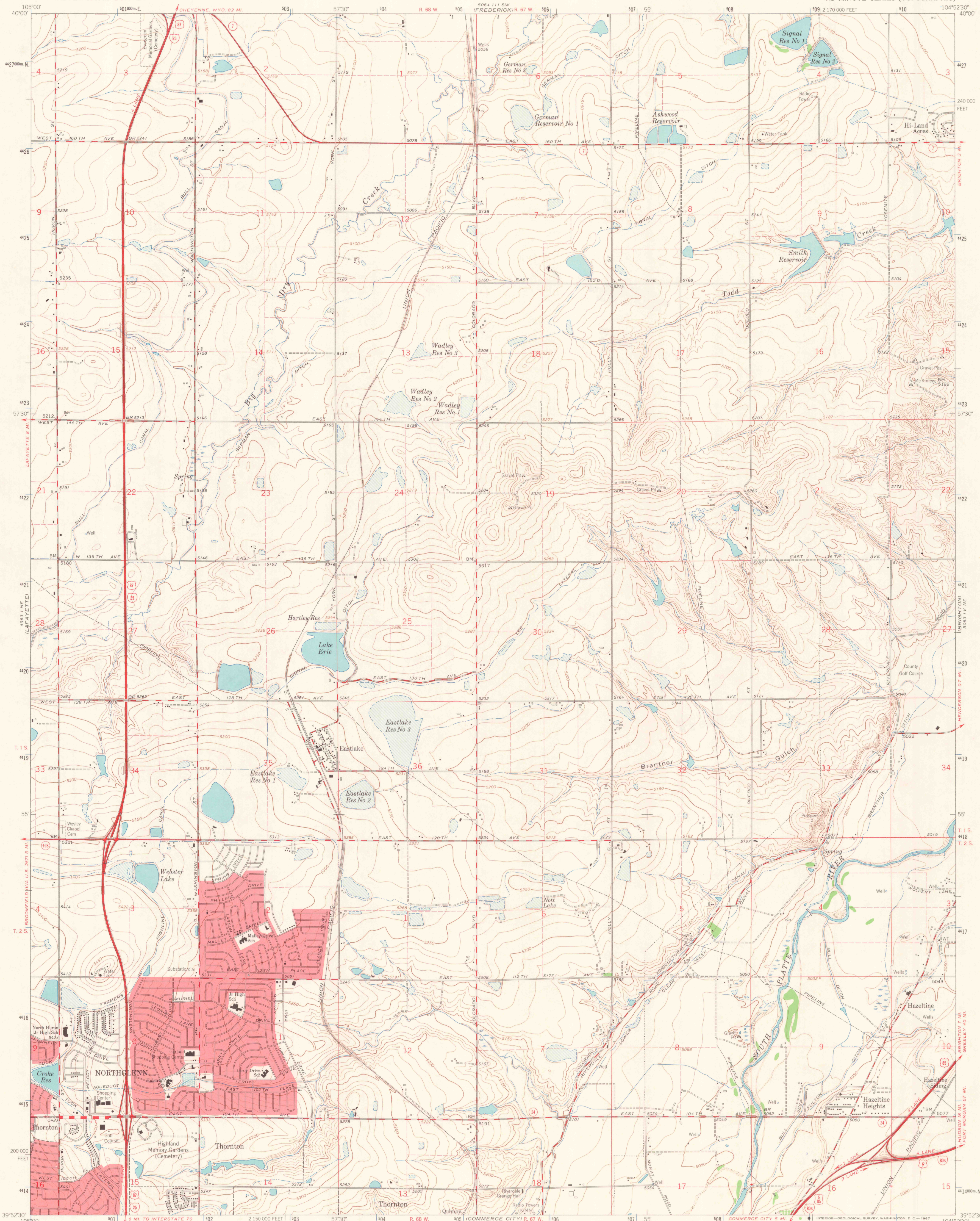
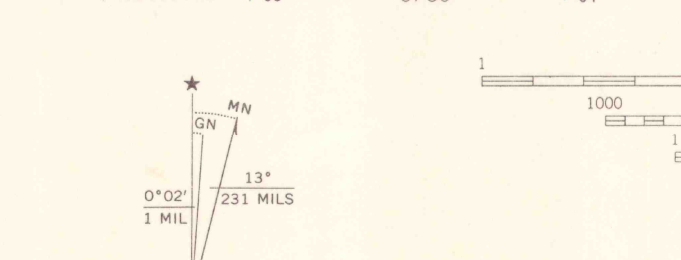


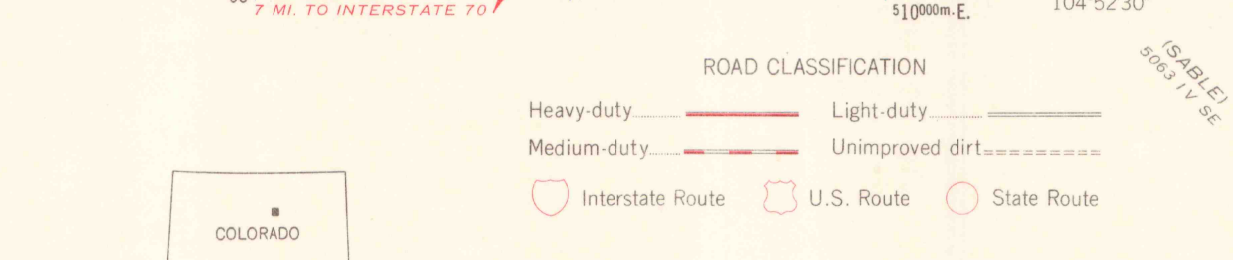
506+11 SW
(FORT LUTFON)



Maped, edited, and published by the Geological Survey
Control by USGS and USC&GS
Topography by photogrammetric methods from aerial photographs taken 1964. Field checked 1965. Supersedes map dated 1957
Polyconic projection. 1927 North American datum
10,000-foot grid based on Colorado coordinate system, north zone
1000-meter Universal Transverse Mercator grid ticks, zone 13, shown in blue
Red tint indicates areas in which only landmark buildings are shown
Areas covered by dashed light-blue pattern are subject to controlled inundation
Fine red dashed lines indicate selected fence lines
This map does not reflect ground conditions resulting from flood of June 1965



THIS MAP COMPLIES WITH NATIONAL MAP ACCURACY STANDARDS
FOR SALE BY U.S. GEOLOGICAL SURVEY, DENVER, COLORADO 80225, OR WASHINGTON, D.C. 20242
A FOLDER DESCRIBING TOPOGRAPHIC MAPS AND SYMBOLS IS AVAILABLE ON REQUEST



EASTLAKE, COLO.
N3952.5-W10452.5/7.5
1965
AMS 5063 IV NW-SERIES V877

LIBRARY USE ONLY