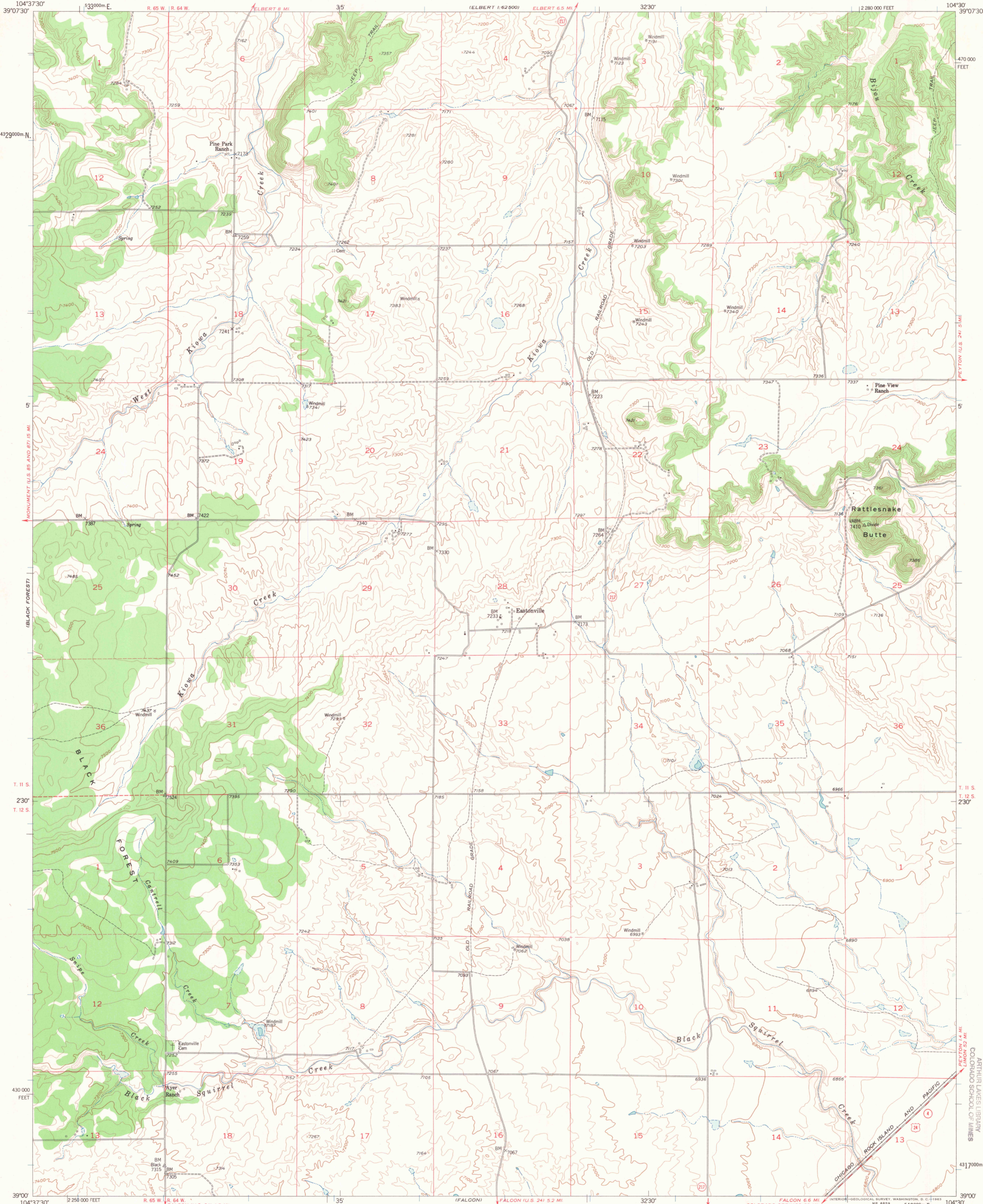
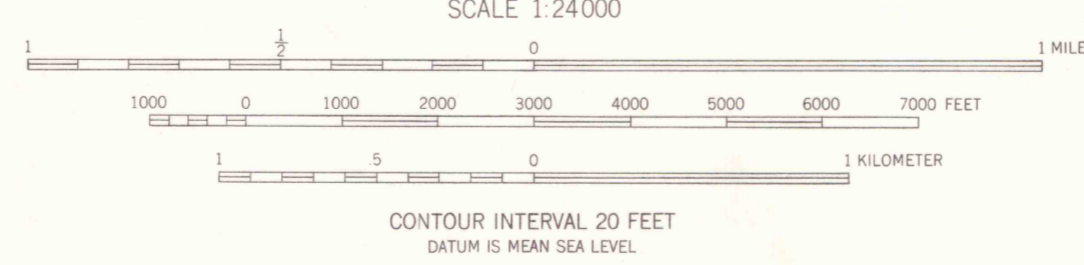


UNITED STATES
DEPARTMENT OF THE INTERIOR
GEOLOGICAL SURVEY

EASTONVILLE QUADRANGLE
COLORADO-EL PASO CO.
7.5 MINUTE SERIES (TOPOGRAPHIC)
SE 1/4 ELBERT 15 QUADRANGLE



Mapped, edited, and published by the Geological Survey
Control by USGS and USC&GS
Topography from aerial photographs by multiplex methods
Aerial photographs taken 1952. Field check 1954
Polyconic projection, 1927 North American datum
10,000-foot grid based on Colorado coordinate system,
central zone
Dashed land lines indicate approximate locations
1000-meter Universal Transverse Mercator grid ticks,
zone 13, shown in blue



ROAD CLASSIFICATION
1953
Medium-duty ——— Light-duty ———
Unimproved dirt - - - - -
U.S. Route ——— State Route ———



MAY 1995

EASTONVILLE, COLO.
SE 1/4 ELBERT 15 QUADRANGLE
N3900-W10430/7.5

MAP ROOM
ARTHUR LAKES LIBRARY
COLORADO SCHOOL OF MINES

1954
G 3700
s24
.G4
MAP ROOM



THIS MAP COMPLIES WITH NATIONAL MAP ACCURACY STANDARDS
FOR SALE BY U.S. GEOLOGICAL SURVEY, DENVER 25, COLORADO OR WASHINGTON 25, D. C.
A FOLDER DESCRIBING TOPOGRAPHIC MAPS SYMBOLS IS AVAILABLE ON REQUEST

AUG 2 0 1997

MAP ROOM
ARTHUR LAKES LIBRARY
COLORADO SCHOOL OF MINES

1954
U18800 3161253