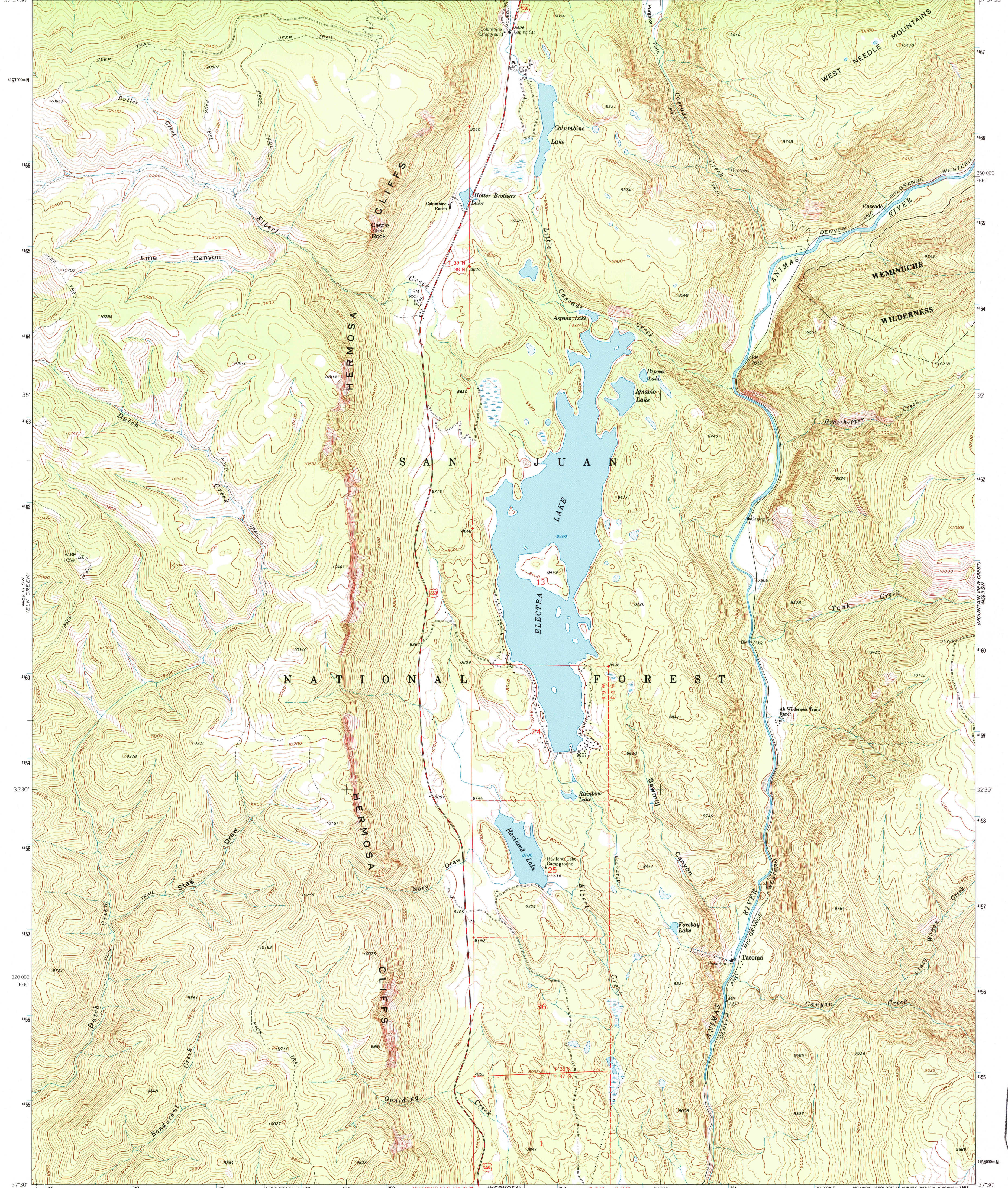
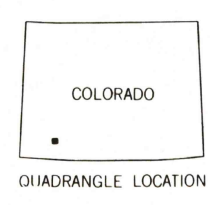
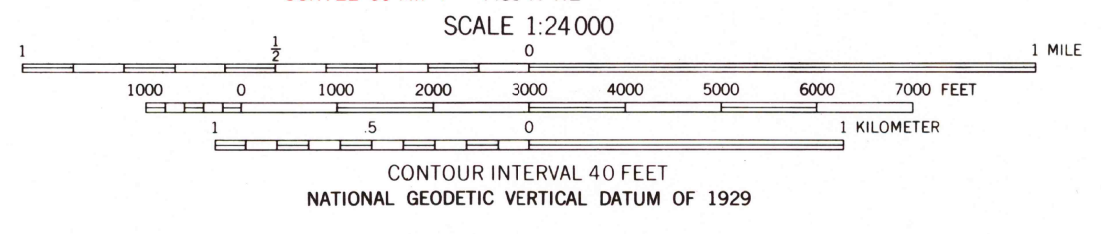
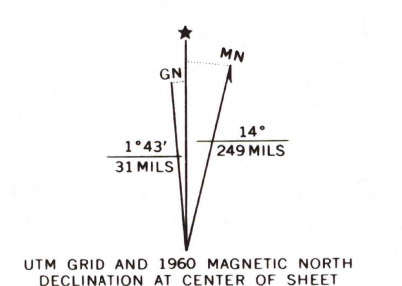


107°52'30" 247 248 249 501 750 751 (ENGINEER MOUNTAIN) SILVERTON 22 MI. MILL CREEK LODGE 4.5 MI. 753 4730' 754 1 340 000 FEET 756 107°45'



Mapped, edited, and published by the Geological Survey
Control by USGS and NOS/NOAA
Topography by photogrammetric methods from aerial photographs taken 1956. Field checked 1960
Polyconic projection. 1927 North American Datum
10,000-foot grid based on Colorado coordinate system, south zone
1000-meter Universal Transverse Mercator grid ticks, zone 13, shown in blue
The difference between 1927 North American Datum and North American Datum of 1983 (NAD 83) for 7.5 minute intersections is given in USGS Bulletin 1875. The NAD 83 is shown by dashed corner ticks
Where omitted, land lines have not been established
There may be private inholdings within the boundaries of the National or State reservations shown on this map



ROAD CLASSIFICATION
Medium duty ——— Light duty ———
Unimproved dirt - - - - - U.S. Route

THIS MAP COMPLIES WITH NATIONAL MAP ACCURACY STANDARDS
FOR SALE BY U.S. GEOLOGICAL SURVEY, P.O. BOX 25286, DENVER, COLORADO 80225
A FOLDER DESCRIBING TOPOGRAPHIC MAPS AND SYMBOLS IS AVAILABLE ON REQUEST

ELECTRA LAKE, COLO.
37107-E7-024
1960
DMA 4459 III SE-SERIES V877

USGS 1960 HISTORICAL
MAP ARCHIVES
MAY 31 1998
REC'D FILE COPY

